



Saltsman Road | Bury St Edmunds | IP32 7QG

Shared Ownership £107,000

COMING SOON! Brand New two bedroom property available with Havebury Housing Partnership. This beautiful home benefits from spacious living, modern kitchen, ground floor cloakroom and off road parking. Price is based on 40% share. Share options available from 25%-75%.

- Brand New
- Shared Ownership
- 2 Bedrooms
- Ground Floor Cloakroom
- Garden
- Off Road Parking
- Price Is Based On 40% Share

Approximate Room Sizes

ENTRANCE HALL

KITCHEN 10' 0" x 8' 4" (3.05m x 2.54m) Double glazed window to front, range of wall and base units with stainless steel sink with drainer, oven with gas hob and extractor over, spaces for appliances

GROUND FLOOR CLOAKROOM W/C, wash hand basin

LIVING ROOM 15' 5" x 10' 5" (4.7m x 3.18m) Double glazed window to rear and door leading to the garden

FIRST FLOOR LANDING

BEDROOM ONE 11' 8" x 11' 1" > 8'1 (3.56m x 3.38m) Two double glazed windows to front, built in cupboard

BEDROOM TWO 15' 4" x 10' 6" (4.67m x 3.2m) Double glazed window to rear

BATHROOM W/C, pedestal wash hand basin, panelled bath

AGENTS NOTE Full Market Value £267,500

40% Share Price - £107,000

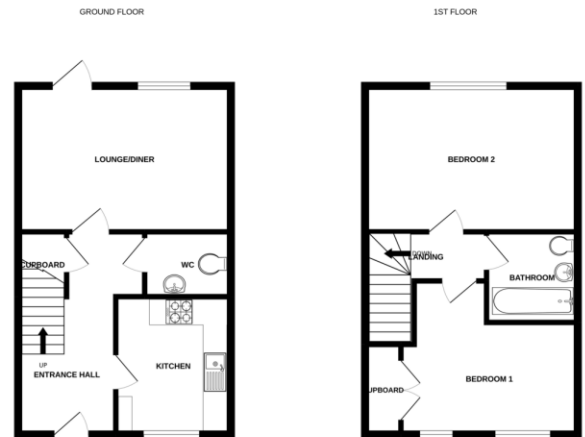
60% Rent - £367.81 PCM

Service Charge - £10.44 PCM

Local Authority – West Suffolk Council

Tenure – Leasehold

Post Code – IP32 7QG



Whilst every effort has been made to ensure the accuracy of the floorplan, combined with measurements of walls, windows, doors and any other items an approximate nature responsibility is taken for any error, omission or misstatement. This plan is for guidance purposes only and should not be used for any professional purposes. The services, systems and equipment shown have not been tested and no guarantee as to their operation or efficiency can be given.
Mark and Morgan (2022)



Contact Details

6 The Traverse, Bury St Edmunds, IP33 1BJ

Tel: 01284 769598

Email: burystedmunds@bychoice.co.uk

%epcGraph_c_1_381%

Agents Note: Whilst every care has been taken to prepare these sales particulars, they are for guidance purposes only. All measurements are approximate and for general guidance purposes only and whilst every care has been taken to ensure their accuracy, they should not be relied upon and potential buyers are advised to check the measurements

