

Bridges Court Road
London, SW11 3GW

PROPERTY SUMMARY

A well proportioned two bedroom apartment set on the fifth floor of this riverside development. This welcoming property offers over 800 sq ft of accommodation comprising two bedrooms, one bathroom and a social open reception room with a well appointed open plan kitchen. Further benefits include two private balconies, partial river views and secure allocated parking for one car.

2

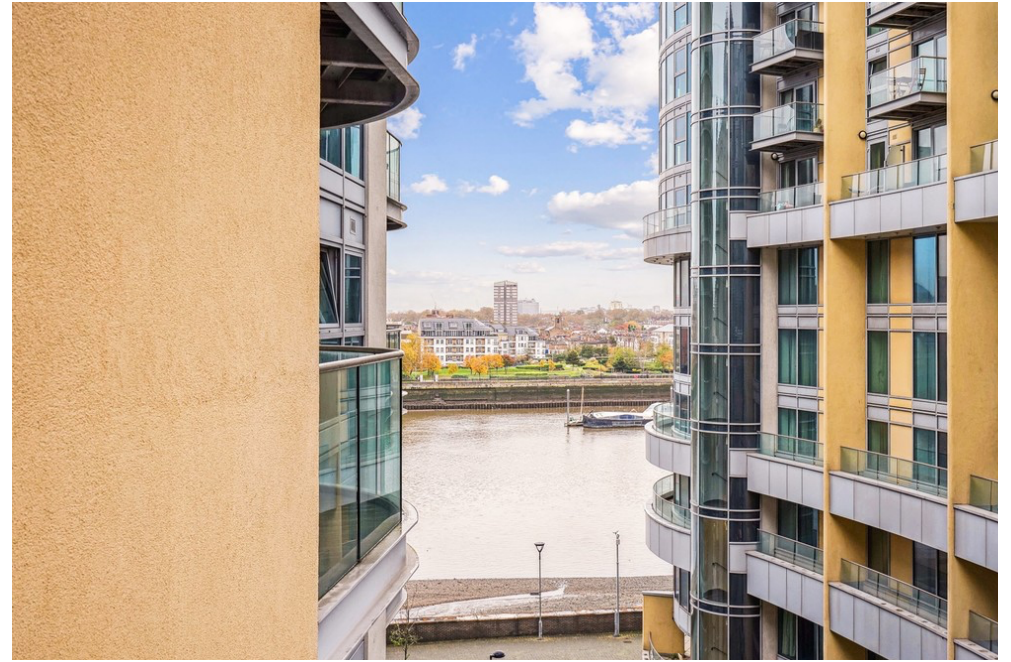


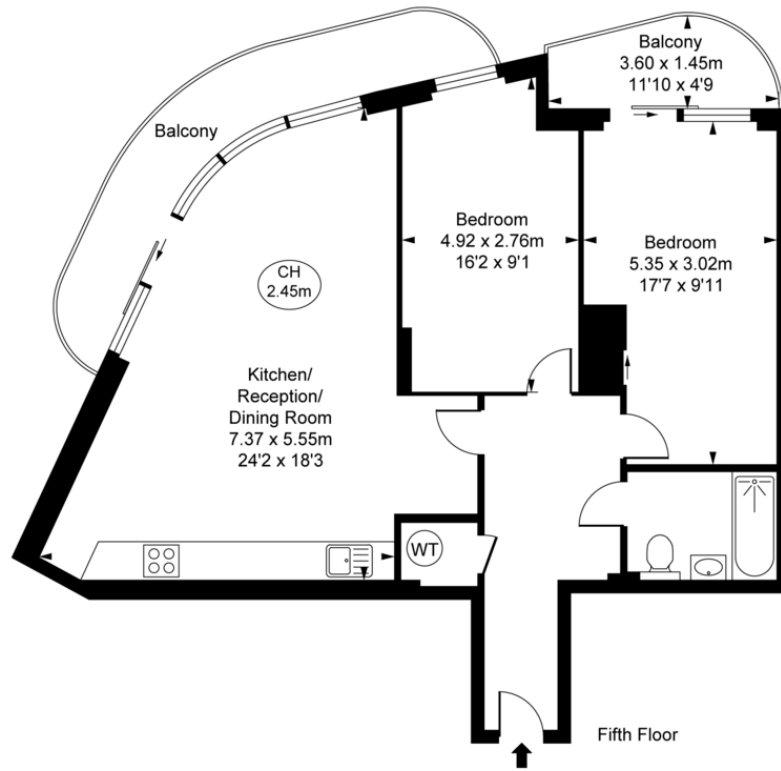
1



1







Orbis Wharf, SW11
 Approximate Gross Internal Area
 75.65 sq m / 814 sq ft
 (CH = Ceiling Heights)



This plan is not to scale. It is for guidance and not for valuation purposes.
 All measurements and areas are approximate only, and have been prepared in accordance with the current edition of the RICS Code of Measuring Practice.
 © Fulham Performance

LOCAL AUTHORITY
 Wandsworth Borough Council

TENURE
 Leasehold

COUNCIL TAX BAND
 Band E

VIEWINGS
 By prior appointment only

Score	Energy rating	Current	Potential
92+	A		
81-91	B		
69-80	C	75 C	77 C
55-68	D		
39-54	E		
21-38	F		
1-20	G		

Agents Note: Whilst every care has been taken to prepare these particulars, they are for guidance purposes only. All measurements are approximate and are for general guidance purposes only and whilst every care has been taken to ensure their accuracy, they should not be relied upon and potential buyers/tenants are advised to recheck the measurements



4 Vicentia Court
 Bridges Wharf
 London
 SW11 3GY

02073522455
 info@hgproperty.co.uk
 www.hgproperty.co.uk