



31 Heathway, Iver

Iver

£425,000



LAWRENCE RAND

31 Heathway

Iver, Iver

A two double-bedroom corner-plot semi-detached house situated in this quiet residential road in close proximity to Iver. Potential to extend (stpp) and NO ONWARD CHAIN.

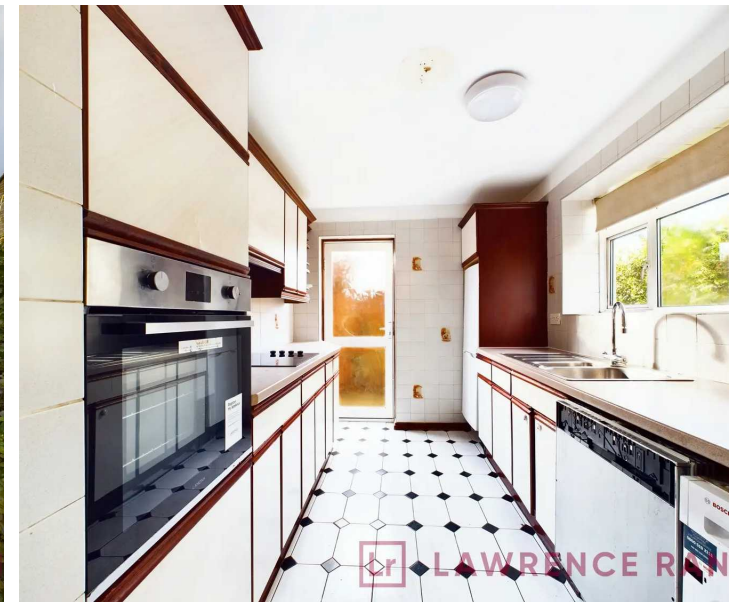
Council Tax band: D

Tenure: Freehold

EPC Energy Efficiency Rating: C

EPC Environmental Impact Rating: D

- Semi-detached house
- Two bedrooms
- Corner plot
- Large frontage
- No chain

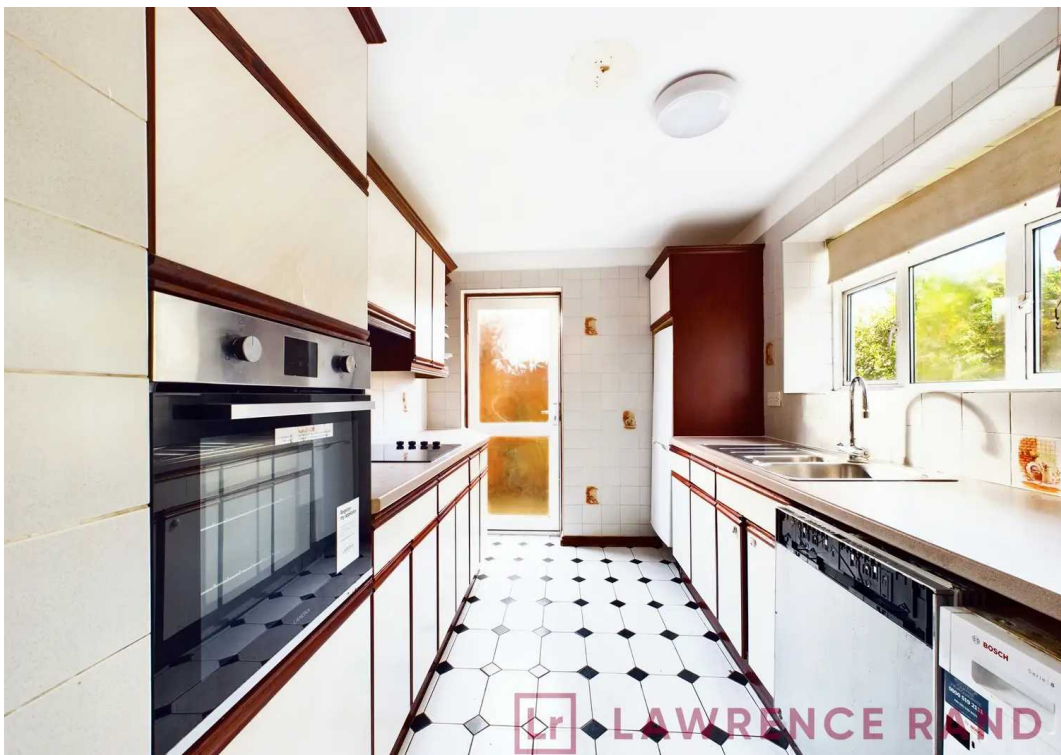




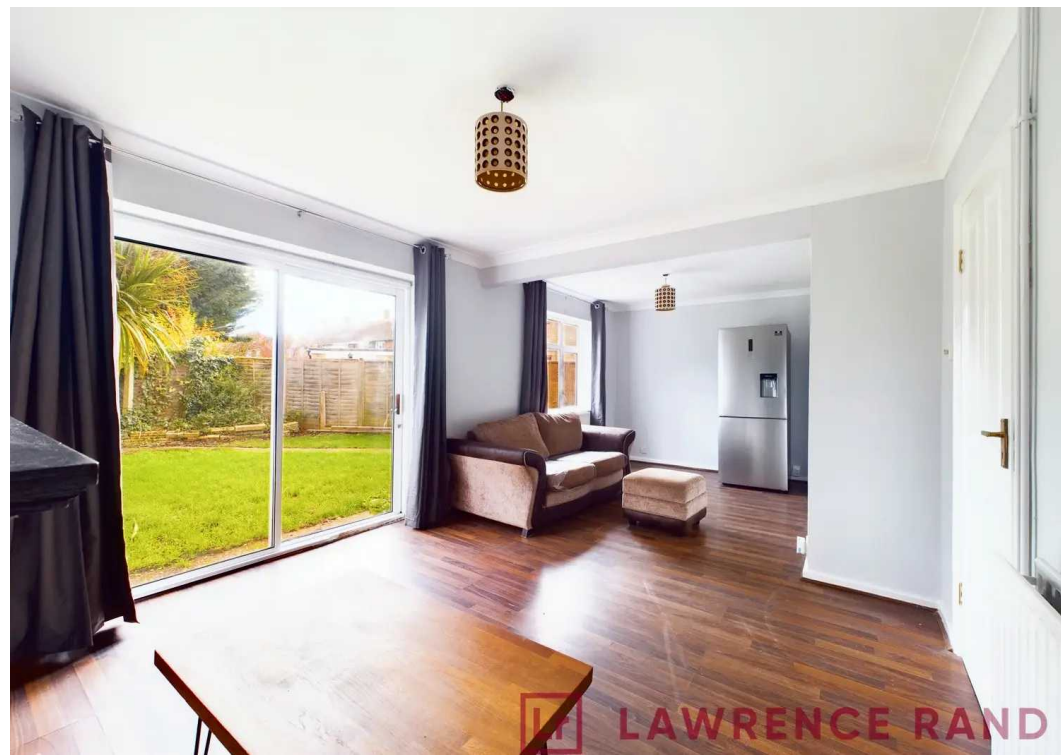
Lr LAWRENCE RAND



Lr LAWRENCE RAND



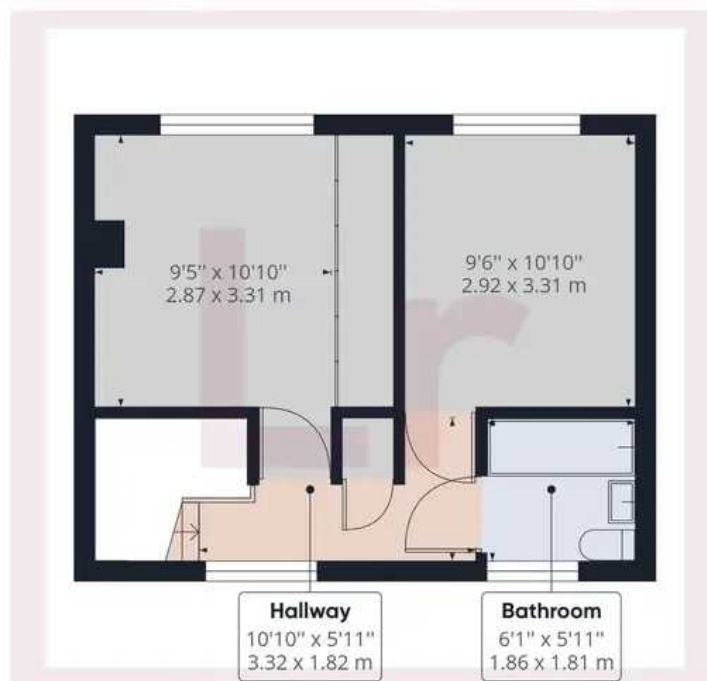
Lr LAWRENCE RAND



Lr LAWRENCE RAND



Ground Floor



Floor 1

Approximate total area⁽¹⁾

682.15 ft²

63.37 m²

⁽¹⁾ Excluding balconies and terraces.

While every attempt has been made to ensure accuracy, all measurements are approximate, not to scale. This floor plan is for illustrative purposes only.

GIRAFFE 360



Lawrence Rand

Lawrence Rand, 106 Victoria Road - HA4 0AL

01895 632211

Info@lawrence-rand.co.uk

www.lawrence-rand.co.uk/



LAWRENCE RAND