



LAWRENCE RAND

Northdown Close, Ruislip

Guide Price **£340,000**



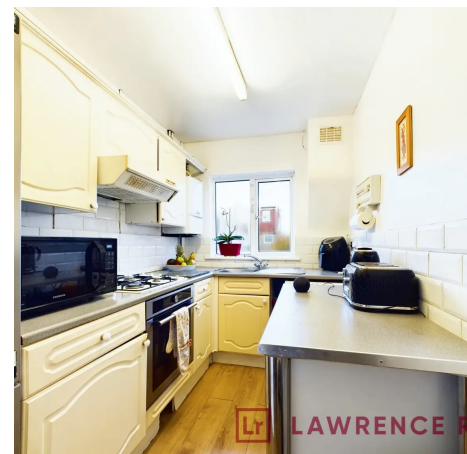
Northdown Close

Ruislip, Ruislip

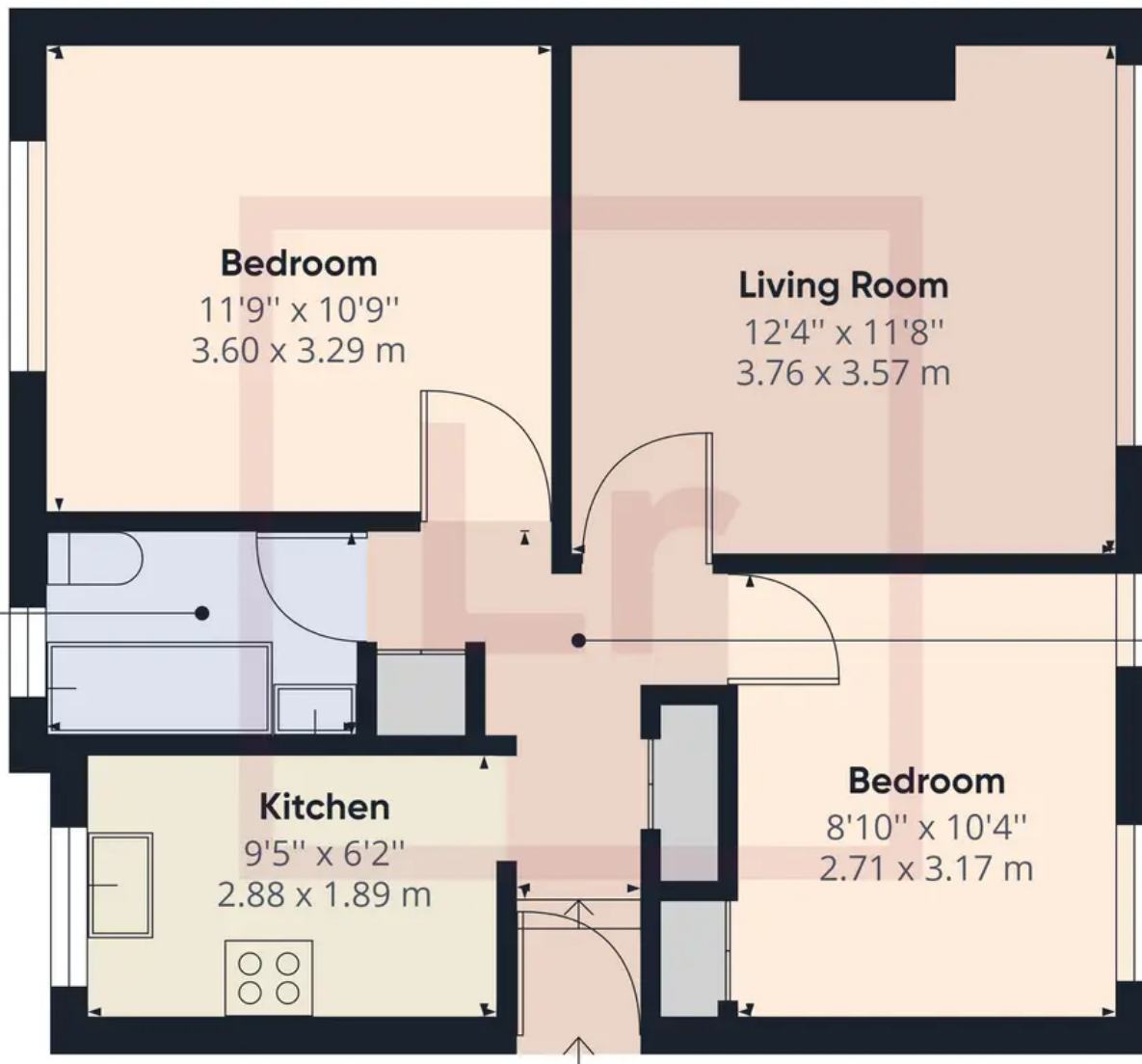
2 bed maisonette in prime location. Spacious double bedrooms, private garden. Extended lease for long-term security. Excellent transport links, close to amenities. Don't miss this comfortable and convenient property.

Council Tax band: C

- Two double bedrooms
- Extended lease on completion
- Own garden
- Close to tube







Approximate total area⁽¹⁾

527.98 ft²

49.05 m²

(1) Excluding balconies and terraces

While every attempt has been made to ensure accuracy, all measurements are approximate, not to scale. This floor plan is for illustrative purposes only.

GIRAFFE 360



Lawrence Rand

Lawrence Rand, 106 Victoria Road - HA4 0AL

01895 632211

Info@lawrence-rand.co.uk

www.lawrence-rand.co.uk/



LAWRENCE RAND