



**LAWRENCE RAND**

Flat 12, Rotary House Breakspear Road, Ruislip  
£250,000





## Flat 12

Rotary House Breakspear Road, Ruislip

A particularly spacious one bedroom upper floor apartment presented in very good condition throughout. This property would make a perfect starter home or a solid investment opportunity. Close to bus routes, easy access to Ruislip High Street - including Met/Picc line station and no onward chain.

Council Tax band: C

Tenure: Leasehold

- Spacious Top Floor Apartment
- Large Double Bedroom
- Modern Kitchen
- Modern Bathroom
- Residents Parking to Rear
- Easy Access to High Street Amenities & Station







Lr LAWRENCE RAN



Lr LAWRENCE RAN



Lr LAWRENCE RAN



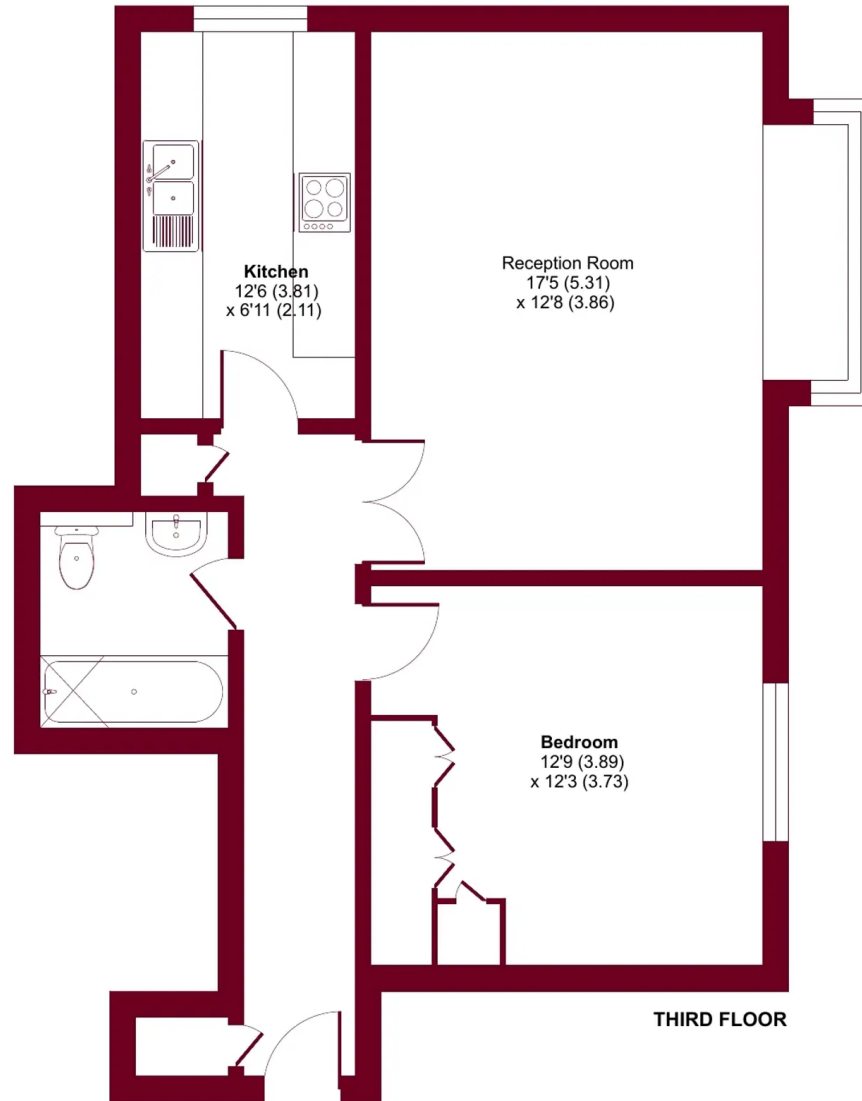
Lr LAWRENCE RAN



# Breakspear Road, Ruislip, HA4

Approximate Area = 645 sq ft / 60 sq m

For identification only - Not to scale



Floor plan produced in accordance with RICS Property Measurement Standards incorporating International Property Measurement Standards (IPMS2 Residential). © nlcocom 2022. Produced for Lawrence Rand. REF: 857273





## Lawrence Rand

Lawrence Rand, 106 Victoria Road - HA4 0AL

01895 632211

[Info@lawrence-rand.co.uk](mailto:Info@lawrence-rand.co.uk)

[www.lawrence-rand.co.uk/](http://www.lawrence-rand.co.uk/)



**LAWRENCE RAND**