



West Avenue North Shields, NE29 7JE

Fresh Property Centre welcomes to the market this two bedroom upper flat situated on West Avenue, North Shields. The accommodation comprises; entrance lobby, landing, lounge, kitchen, two bedrooms and a bathroom/WC. Externally there is a garden to rear. The property benefits from gas central heating and double glazing. Offered with no upper chain, this property would make an ideal first time buy.

Asking Price £79,950



0191 257 6823

www.fresh.property

hello@fresh.property

63 Church Way, North Shields, Tyne & Wear, NE29 0AE



Zoopla

rightmove

PrimeLocation

OnTheMarket.com

Fresh Property Centre welcomes to the market this two bedroom upper flat situated on West Avenue, North Shields. The accommodation comprises; entrance lobby, landing, lounge, kitchen, two bedrooms and a bathroom/WC. Externally there is a garden to rear. The property benefits from gas central heating and double glazing. Offered with no upper chain, this property would make an ideal first time buy.

Entrance Lobby

Stairs to first floor.

Landing

Loft access and radiator.

Lounge

Built in cupboard, radiator and double glazed window.



Bedroom One

Built in cupboard, radiator and double glazed window.



Bedroom Two

Laminate flooring, radiator and double glazed window.



Kitchen

Matching base and wall units with work surfaces over, stainless steel sink with drainer and mixer tap, built in oven with four ring electric hob and extractor fan over, plumbing for a washing machine and double glazed window.



0191 257 6823

www.fresh.property

hello@fresh.property

63 Church Way, North Shields, Tyne & Wear, NE29 0AE



Zoopla

rightmove

PrimeLocation

OnTheMarket.com

Bathroom

Three piece bathroom suite comprising of; panelled bath with mixer tap and shower attachment, pedestal hand wash basin and low level WC. Part tiled, laminate flooring, radiator and two frosted double glazed windows.



Rear Garden

Laid to lawn and patio area.



Score	Energy rating	Current	Potential
92+	A		
81-91	B		
69-80	C		74 C
55-68	D	68 D	
39-54	E		
21-38	F		
1-20	G		

Please Note: All measurements are approximate and quoted in metric with imperial equivalents and for general guidance only and whilst every attempt has been made to ensure accuracy, they must not be relied on. The fixtures, fittings and appliances referred to have not been tested and therefore no guarantee can be given that they are in working order. Internal photographs are reproduced for general information and it must not be inferred that any item shown is included with the property.

Thinking of Moving?

Fresh can help you;

- Sell your home
- Arrange a mortgage
- Select a local solicitor

Call our team to see how we can help

0191 257 6823

www.fresh.property

hello@fresh.property

63 Church Way, North Shields, Tyne & Wear, NE29 0AE



Zoopla

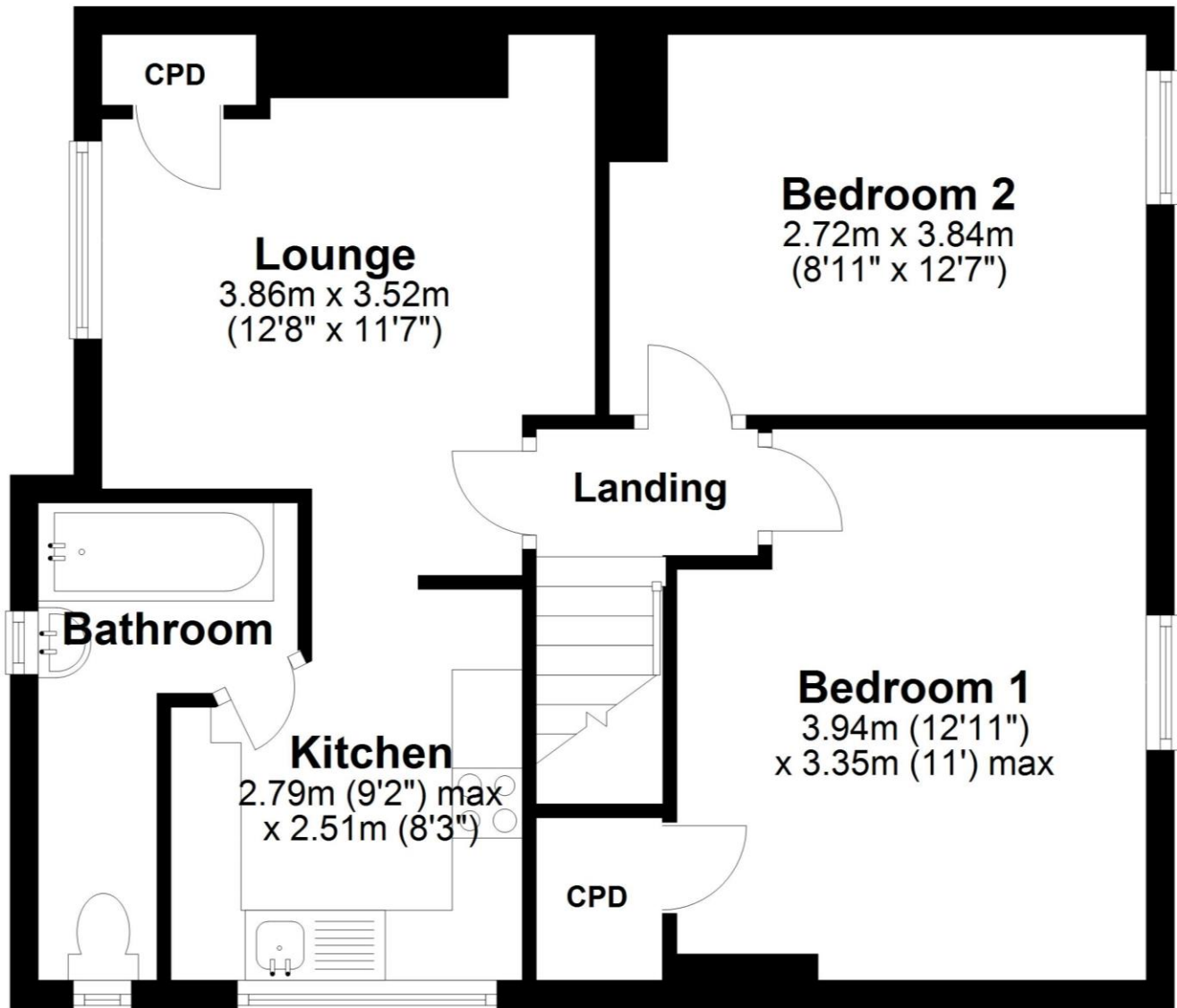
rightmove

PrimeLocation

onTheMarket.com

First Floor

Approx. 51.9 sq. metres (558.9 sq. feet)



Total area: approx. 51.9 sq. metres (558.9 sq. feet)

The floor plan is for illustrative purposes and is not to scale. Where measurements are shown, these are approximate and should not be relied upon. Sanitary ware and kitchen fittings are representative only and approximate to actual position, shape and style. No liability is accepted in respect of any consequential loss arising from the use of this plan.

0191 257 6823

www.fresh.property

hello@fresh.property

63 Church Way, North Shields, Tyne & Wear, NE29 0AE



Zoopla

rightmove

PrimeLocation

onTheMarket.com