



LAWRENCE RAND

Kingfisher Close, Harrow Weald

£425,000

Kingfisher Close

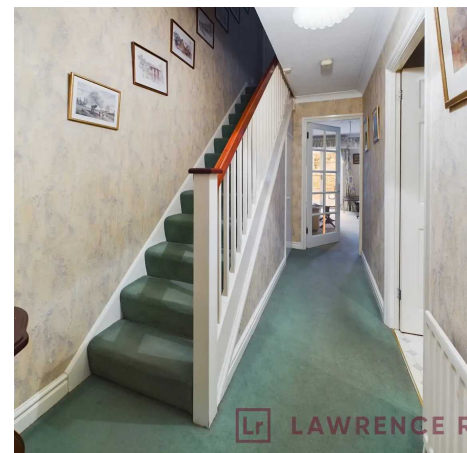
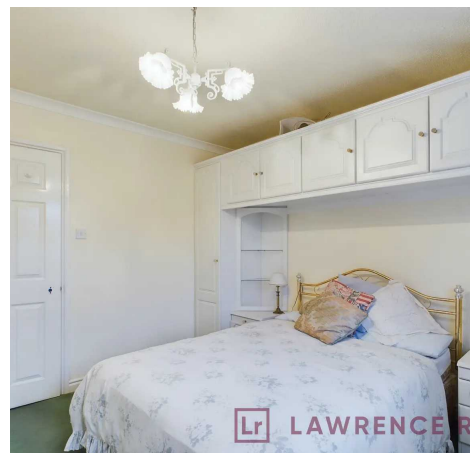
Harrow Weald, Harrow

This two double bedroom end of terrace house is being sold with no onward chain and is situated in a popular cul-de-sac development. The property requires modernisation and would be an ideal purchase for a buyer looking to add their own stamp to their new home.

Council Tax band: E

Tenure: Freehold

- End of Terrace House
- Modern cul-de-sac Development
- 2 Double Bedrooms
- Family Bathroom
- Ground Floor WC
- Good Size Garden
- No Onward Chain







Ground Floor



Floor 1

Approximate total area⁽¹⁾

658.55 ft²

61.18 m²

(1) Excluding balconies and terraces

While every attempt has been made to ensure accuracy, all measurements are approximate, not to scale. This floor plan is for illustrative purposes only.

GIRAFFE 360



Lawrence Rand

Lawrence Rand, 106 Victoria Road - HA4 0AL

01895 632211

Info@lawrence-rand.co.uk

www.lawrence-rand.co.uk/



LAWRENCE RAND