



2 Bedroom Apartment Offers In Region Of £205,000

Flat 5, 16 Creswick, Tadpole Garden Village, Swindon, SN25 2TA

**mcfarlane**  
property.com

## 2 Bedroom Apartment North Swindon

---

- Rare Double Carport with option to add garage doors subject to planning consent.
  - Large utility room with space and plumbing for 3 appliances.
  - Two Double bedrooms
- 

Be AMAZED by the size of this SPACIOUS, TWO DOUBLE BEDROOM apartment with UTILITY ROOM, situated in an attractive SMALL BLOCK OF 5 in TADPOLE GARDEN VILLAGE

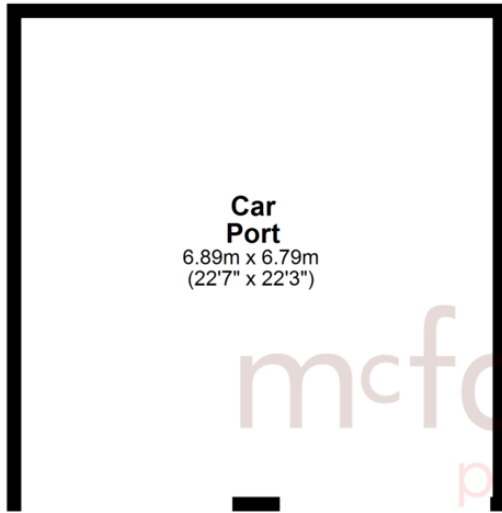
This is an impressively presented TWO DOUBLE BEDROOM, TOP FLOOR APARTMENT benefiting from a rare DOUBLE CARPORT and UTILITY ROOM as well an open plan living area, en-suite to the master and family bathroom.

Remaining lease 244 years  
Service charge £1972 p.a.  
Ground rent £190 p.a.  
Ground rent escalating by RPI every 20 years

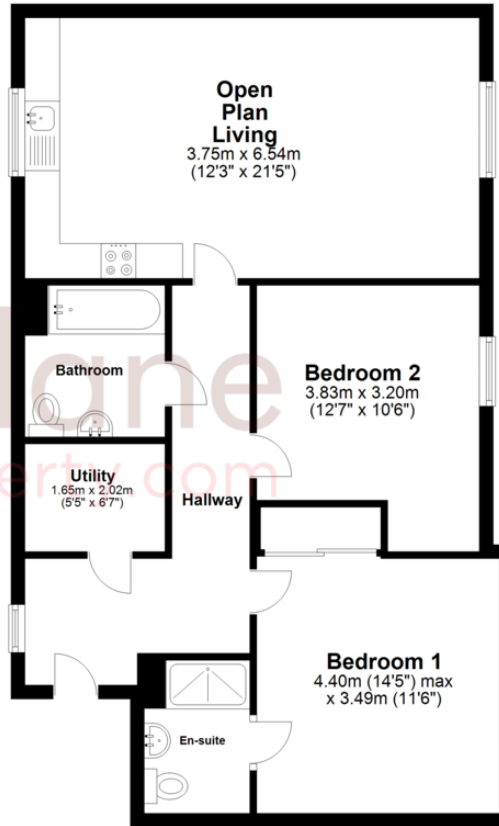




**Car Port**  
Approx. 46.8 sq. metres (503.6 sq. feet)



**Ground Floor**  
Approx. 72.9 sq. metres (784.2 sq. feet)



Total area: approx. 119.6 sq. metres (1287.8 sq. feet)

# We where you LIVE

Our team are friendly, experienced and are all local. They know it better than they do their own living rooms and can help you find what you're looking for because **we love where we live.**

We would be delighted to show you around this property.

**Because every home needs a personal touch.**

**If you would like to view this property then please get in touch.**

 01793 296600

 [swindon@mcfarlaneproperty.com](mailto:swindon@mcfarlaneproperty.com)

[mcfarlaneproperty.com](http://mcfarlaneproperty.com)

**mcfarlane**  
property.com

**Cricklade.**  
102 High Street  
Cricklade SN6 6AA  
 01793 751044

**Marlborough.**  
106 High Street  
Marlborough SN8 1LT  
 01672 514380

**Old Town.**  
28-30 Wood Street  
Swindon SN1 4AB  
 01793 296880

**Swindon.**  
The Village Centre,  
Redhouse SN25 2FW  
 01793 296600

Agents Note: Whilst every care has been taken to prepare these sales particulars, they are for guidance purposes only. All measurements are approximate are for general guidance purposes only and whilst every care has been taken to ensure their accuracy, they should not be relied upon and potential buyers are advised to recheck the measurements