



10 Belle Vue Street, Aberdare, CF44 8NR

£60,000 Freehold

Traditional Stone Cottage • Village Location • Requiring Modernisation • Superb Views • Two Bedrooms • Front Garden and Rear Yard • Off Road Parking



26 Whitcombe Street, Aberdare, Rhondda Cynon Taff, CF44 7AU
Tel: 01685 886086 Email: aberdare@bidmeadcook.co.uk
www.bidmeadcook.co.uk

A terraced, stone-built traditional cottage in need of some modernisation, being located in the village of Trecynon. The accommodation comprises a reception room, kitchen, a traditional stone spiral staircase with feature stone wall leads up to two bedrooms and bathroom. To the outside is a driveway providing off road parking, lawned garden at the front and to the rear is a yard having a power point and arbour. From the front of the property are superb far-reaching views. Aberdare is approximately 1 mile away having amenities to include shops, primary and secondary schools, and bus and train stations.

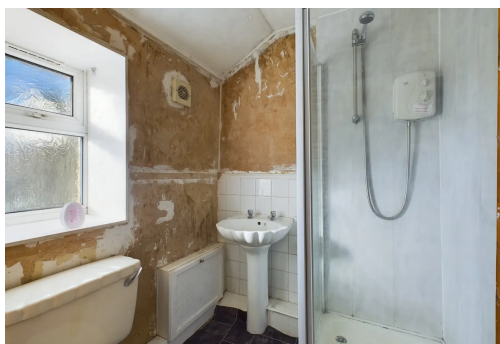


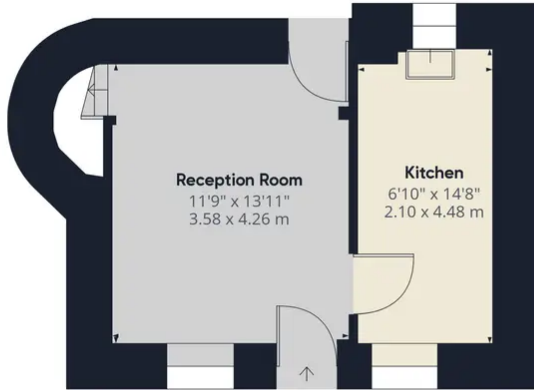
Council Tax band: A

Tenure: Freehold

EPC Energy Efficiency Rating: D

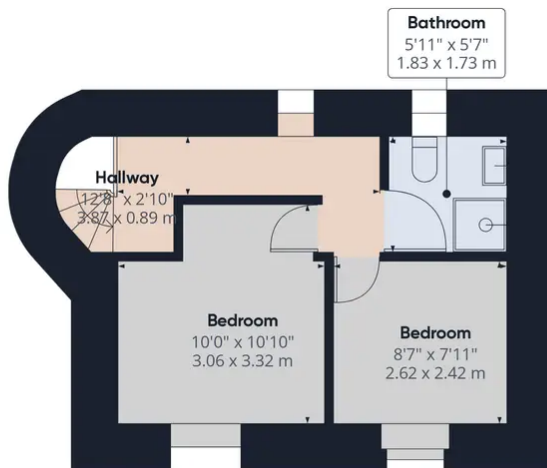
EPC Environmental Impact Rating: D





Ground Floor

Approximate total area^m
559.63 ft²
51.99 m²



Floor 1

Excluding balconies and terraces

While every attempt has been made to ensure accuracy, all measurements are approximate, not to scale. This floor plan is for illustrative purposes only.

GIRAFFE360



No statement in these details is to be relied upon as representation of fact, and purchasers should satisfy themselves by inspection or otherwise as to the accuracy of the statements contain within. These details do not constitute any part of any offer or contract. Bidmead Cook and their employees and agents do not have any authority to give warranty or representation whatsoever in respect of this property. These details and all statements herein are provided without any responsibility on the part of Bidmead Cook or the vendors. Equipment: Bidmead Cook has not tested the equipment or central heating system mentioned in these particulars and the purchaser are advised to satisfy themselves as to the working order and condition. Measurements: Great care is taken when measuring, but measurements should not be relied upon for ordering carpets, equipment etc. The Laws of copyright protect this material. Bidmead Cook is the owner of the copyright. This property sheet forms part of our database and is protected by the database right and copyright laws. No unauthorised copying or distribution without permission.

Bidmead Cook is a trading name of trading name of BC Acquisition Ltd. Registered in England No.14967217