



1 NORTH STREET, LANGTON MATRAVERS  
£365,000 Freehold

This fine end of terrace cottage-style property is situated in a popular position close to the centre of the village of Langton Matravers a short distance from open country. The original property dates back at least 200 years and is constructed of natural Purbeck stone under a Purbeck stone tiled roof.

Whilst in need of some updating, the property offers well planned family accommodation with views across the village to the sea in the distance.

The village of Langton Matravers lies 2.5 miles to the West of the seaside resort of Swanage and some 9 miles from the market town of Wareham, the latter having main line rail link to London Waterloo (approximately 2.5 hours). Much of the area surrounding the village is classified as being of Outstanding Natural Beauty.

All viewings must be accompanied and these are strictly by appointment through the **Sole Agents, Corbens, 01929 422284**. Postcode **BH19 3HL**.

Property Ref LAN1850

Council Tax Band E - £3,164.34 for 2025/2026

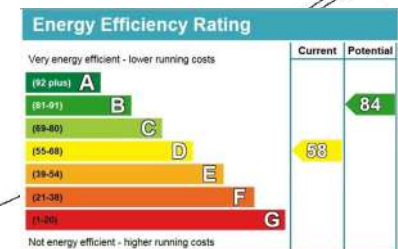
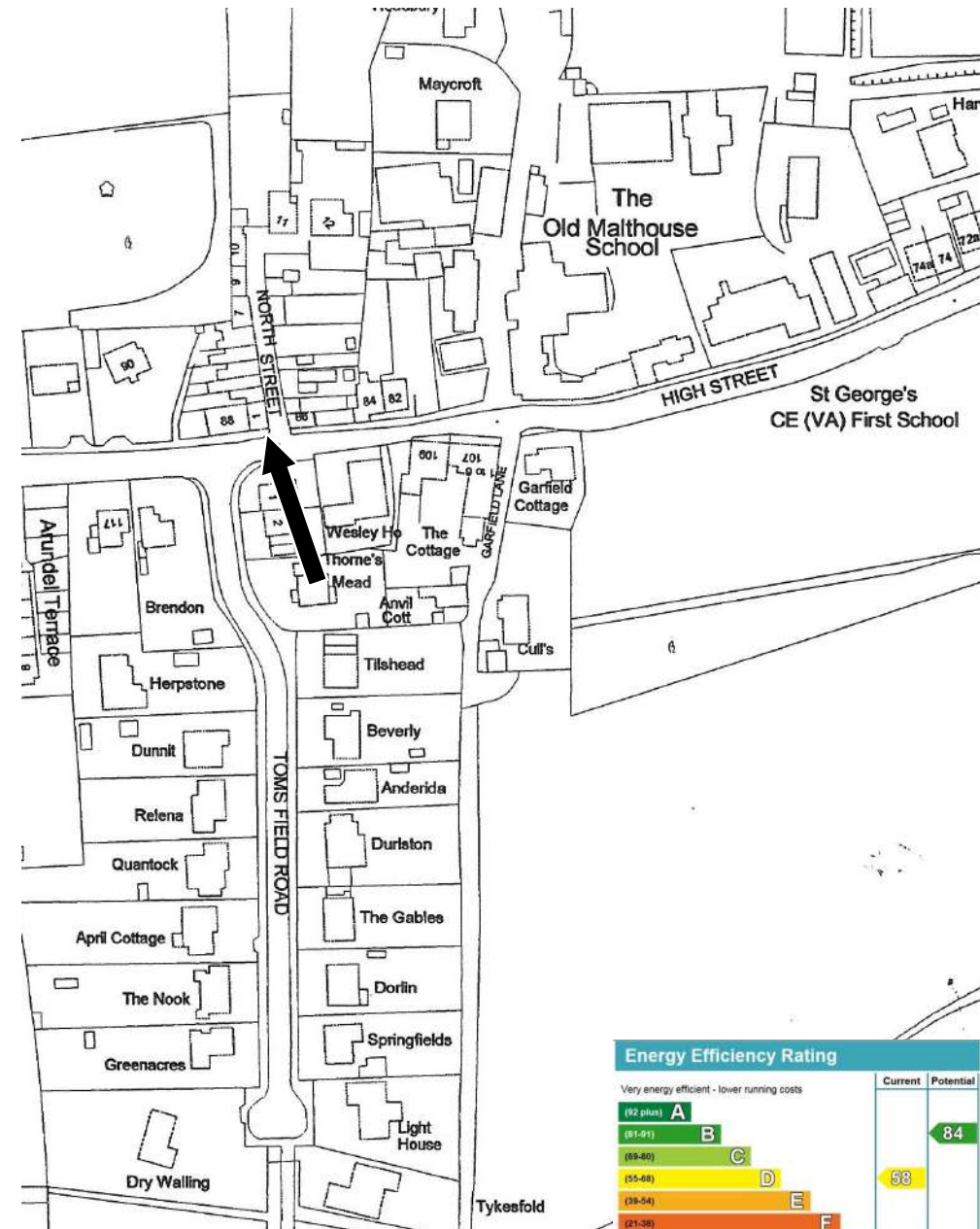
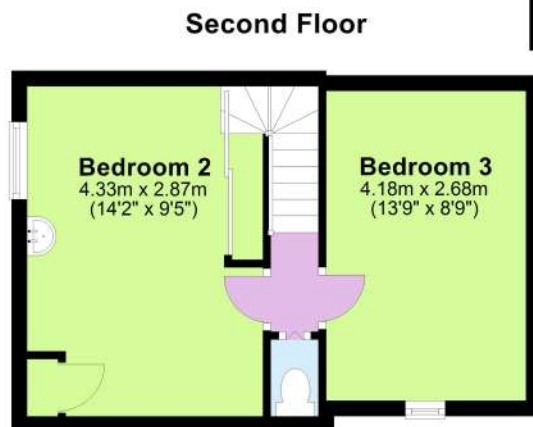
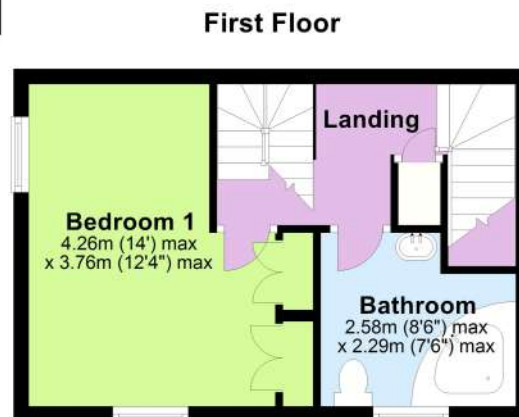
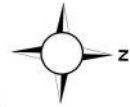
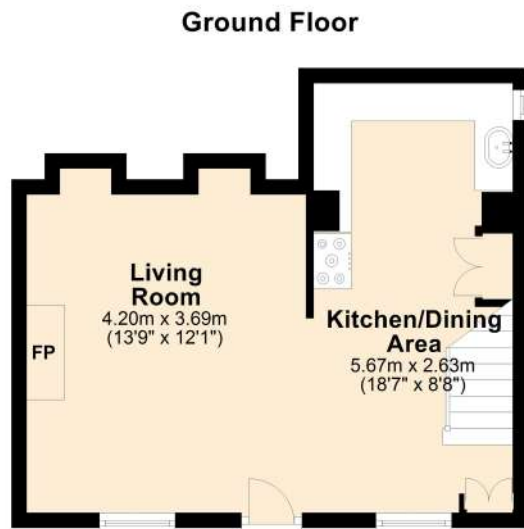


The open plan living room/ kitchen/ dining area comprises the entire ground floor. The living area has a feature Purbeck stone fireplace. The kitchen area is fitted with a range of light units, contrasting worktops, range style cooker and space for a washing machine.

On the first floor, the dual aspect master bedroom is particularly spacious, spanning the entire depth of the property and has the benefit of two fitted wardrobes. It also has views across the village to the sea in the distance. The bathroom with corner bath and shower over serves all bedrooms and is also on this level.

On the second floor, there are two double bedrooms. Bedroom two is a South facing double bedroom with wash basin. The third bedroom is East facing and has views across the village to the sea in the distance. A WC completes the accommodation.

Outside, the gated garden is mostly lawned with flower and shrub borders, paved patio, timber outhouse. Opposite the property is a private paved parking area.



Total Floor Area Approx. 87m<sup>2</sup> (936 sq ft)

