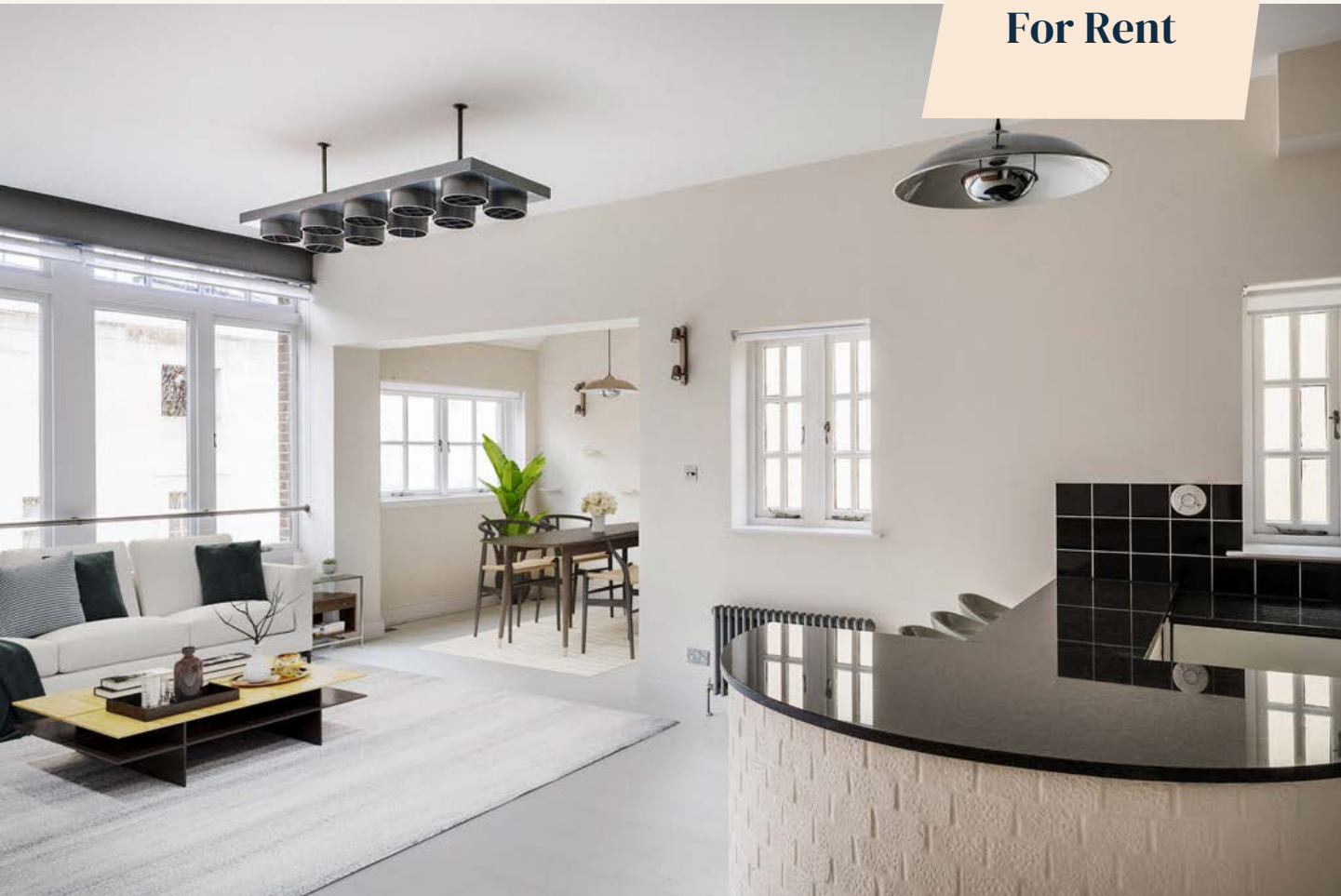
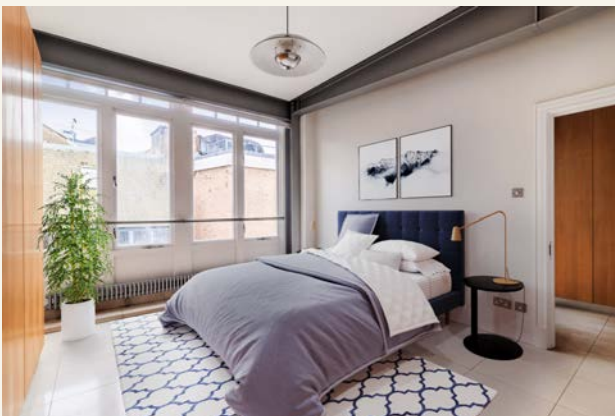


For Rent



People Make Places



Shorts Gardens, Seven Dials WC2

1 bedroom | 1,087 sq ft

£920 pw

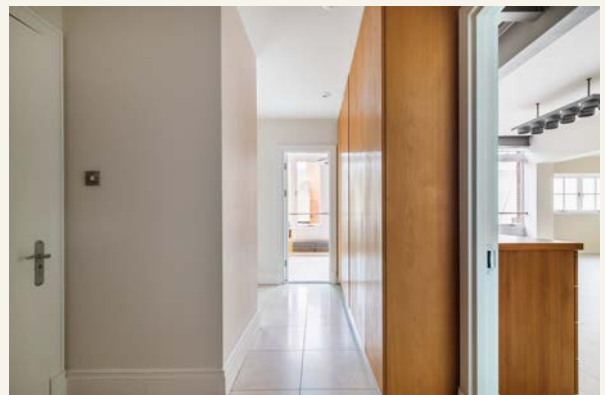




Situated on the top floor of a converted warehouse and measuring approximately 1060 sq ft, this fantastic one bedroom loft-style apartment has wonderfully high ceilings, large windows allowing masses of natural light into an open plan living space with beautiful timber floors and exposed steel beams

What you need to know

- Loft style apartment
- One bedroom
- Two bathrooms
- Warehouse conversion
- Large windows
- Unfurnished
- Third (top) floor
- Lift
- Available immediately
- 24 hour security (no porter)





Overview

This incredible loft apartment is a rare find in Covent Garden, with light flooding through huge windows lining the south side of the apartment and a fantastic sense of space and volume provided by the generous ceiling heights. The extensive open plan living space includes a kitchen with a breakfast bar and separate study/dining area.

The large south facing bedroom suite benefits from a large en-suite shower room, plus a second guest bathroom off of the hallway.

The Thomas Neal's Centre is an historic conversion of a former fruit & vegetable warehouse at the very centre of Seven Dials, benefitting from 24 hour on-site security and featuring only eight individual apartments which are rarely available on the market.





Shorts Gardens is one of seven cobbled streets located off Seven Dials' historic sundial, with the area being home to a multitude of independent retailers, restaurants, cafes as well as Seven Dials Market, a fantastic indoor street food market with a great selection of independent food vendors. Other local institutions include Monmouth Coffee, The Covent Garden Hotel and Neal's Yard.

Seven Dials retains a village feel in the heart of London's West End, with its cobbled streets, historic architecture and laid-back vibe, yet the theatres, shopping and restaurants of Covent Garden or a short stroll south and the nightlife and culture of Soho only a few minutes' walk to the West.

Available immediately on an unfurnished basis for a 12 month let. Camden Council - Tax Band G

*furnished images are digitally enhanced and for indicative purposes only



Shorts Gardens, Seven Dials WC2

People Make Places

London is collection of inspiring urban villages and one of the most exciting places in the world to live, work & play.

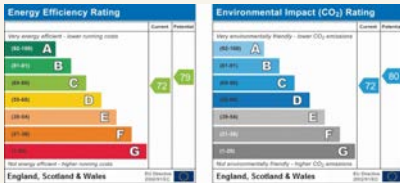
We work with both property owners and their occupiers, sharing the story of these vibrant neighbourhoods, conveying the unique soul & energy to future custodians, the people who'll keep them buzzing.

And unlike many real estate businesses we're not just about buildings, because streets & buildings don't make a neighbourhood.

We're about building relationships, because **people make places**.

MISINTERPRITATION ACT [COPYRIGHT] DISCLAIMER: Tavistock Bow Ltd for themselves and for the vendor(s) of this property whose agents thy are, given notice that: 1. These particulars do not constitute, not constitute any part of, an offer or contract. 2. None of the statements contained in these particulars as to the property are to be relied on as statements or representations of fact. 3. Any intending purchaser or lessee must satisfy themselves by inspection or otherwise as to the correctness of each of the statements contained in these particulars. 4. The vendor(s) or lessor(s) do not make or give and neither Tavistock Bow Ltd nor any person in their employment has any authority to make or give any representation or warranty whatever in relation to this property. Finance Act 1989, Unless otherwise stated all prices and rents are quote exclusive of VAT. Property Misrepresentation Act 1991; These details are believed to be correct at the time of compilation but may be subject to subsequent amendment.

Follow us:     @tavistockbow

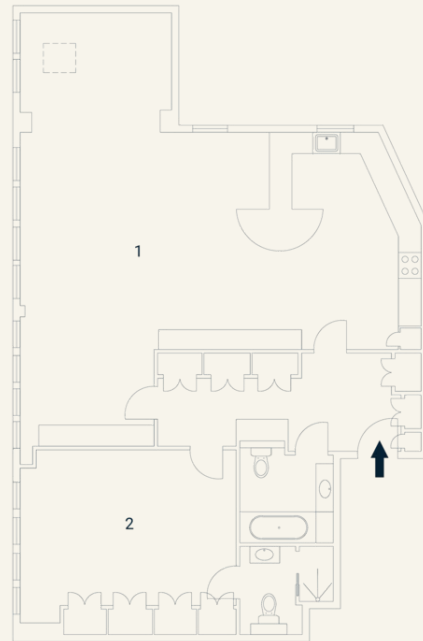


Short's Gardens, WC2

Approximate Gross Internal Area 98 sq m / 1060 sq ft

Third Floor

- 1 Living / 2 Bedroom
- Kitchen / 4.83 x 4.13M
- Dining 15'8" x 13'5"
- 8.83 x 9.58M
- 28'9" x 31'4"



Floorplan produced for Tavistock Bow, illustration for identification purposes only and not to scale. All measurements are approximate and not to be relied upon.

tavistockbow

21 New Row, Covent Garden,
London, WC2N 4LE

t: 020 7477 2177
e: hello@tavistockbow.com
w: tavistockbow.com



Shorts Gardens, Seven Dials WC2