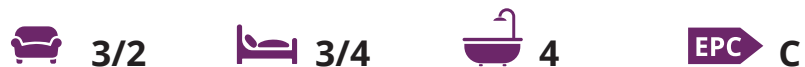






Lamberts House, Lamberts Lane, Midhurst, GU29 9EF

A beautifully presented three bedroom, four bathroom townhouse finished off to an impeccable standard in the heart of Midhurst.



- ▶ No Onward Chain
- ▶ High Specification Finish
- ▶ Ready to Move Into
- ▶ Allocated Parking
- ▶ Courtyard Garden
- ▶ Impeccable Condition
- ▶ Four Bedrooms / Four Bathrooms
- ▶ Town Centre Location
- ▶ Secure Gated Development
- ▶ Flexible & Spacious Accommodation

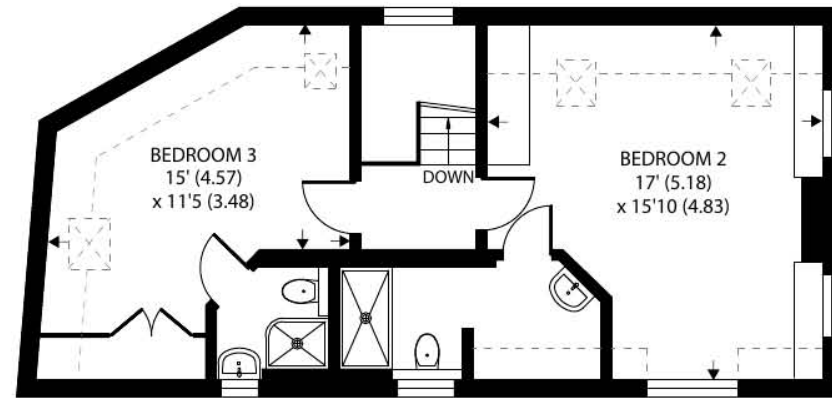
Welcome to this exceptional three-bedroom townhouse nestled in the heart of Midhurst, where luxury living and impeccable design seamlessly combine to create the perfect urban oasis. This stunning property offers a premium standard of living with meticulous attention to detail evident throughout. As you step inside, you are greeted by an inviting entrance hall thoughtfully designed to accommodate coats and shoes. To your right, the high-specification kitchen/dining room awaits which is a chef's dream, boasting integrated appliances, a water softener, Quooker tap, Gaggenau double oven and hob, Fisher and Paykel chiller, central island, and ample base and eye-level storage. The perfect space for culinary enthusiasts and entertainers alike. Across the hall, you'll find a separate utility room with a spacious shower and WC, providing utmost convenience. A versatile ground floor snug adds flexibility to the layout and could even double as a fourth bedroom for guests or family members. The first floor presents a generously proportioned, triple-aspect sitting room complete with a gas fireplace, offering a cozy and elegant space to relax and unwind. A well-appointed double bedroom on this floor provides ample storage and an ensuite bathroom, ensuring comfort and privacy for guests. Ascending to the second floor reveals two more spacious double bedrooms, each featuring its own ensuite bathroom and plenty of storage, making this home ideal for those seeking both luxury and practicality. Outside, a charming small courtyard provides a private outdoor retreat, perfect for enjoying a morning coffee. Additionally, the property includes an allocated parking space behind secure electronic gates.



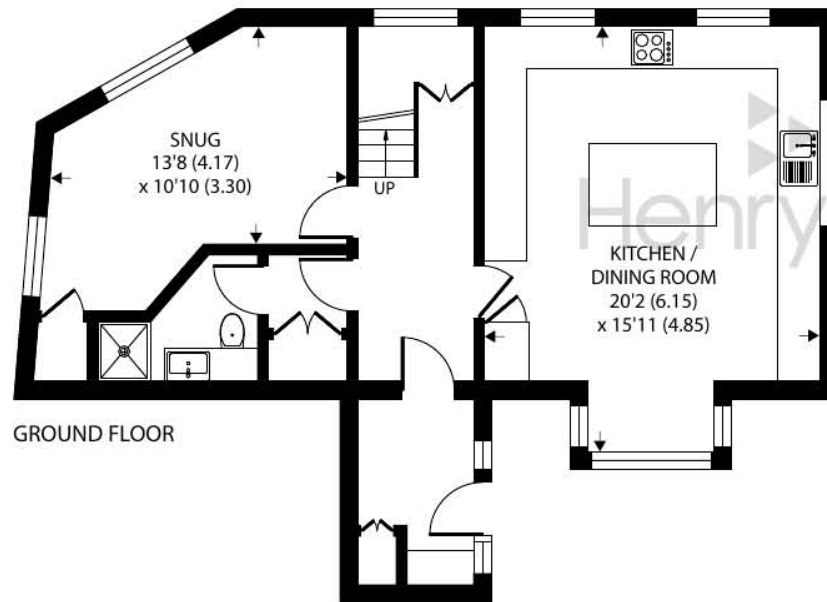




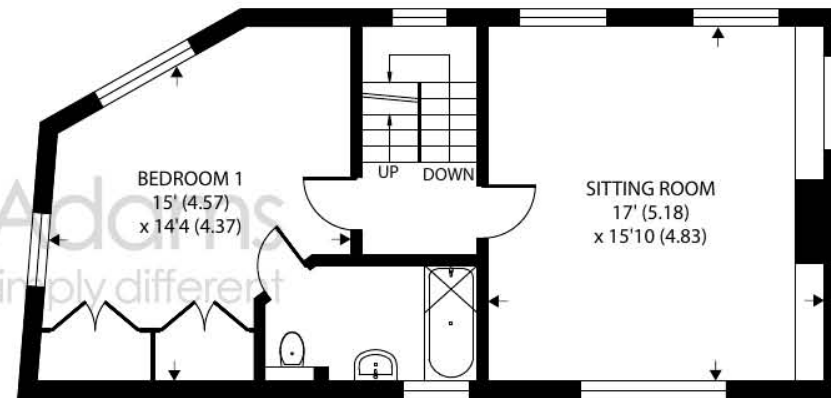
Denotes restricted head height



SECOND FLOOR



GROUND FLOOR



FIRST FLOOR

Lamberts Lane, Midhurst, GU29

Approximate Area = 1752 sq ft / 162.8 sq m

Limited Use Area(s) = 106 sq ft / 9.8 sq m

Total = 1858 sq ft / 172.6 sq m

For identification only - Not to scale



Floor plan produced in accordance with RICS Property Measurement Standards incorporating International Property Measurement Standards (IPMS2 Residential). © nchecon 2023. Produced for Henry Adams, REF: 1031656

Agents Note - Our particulars are for guidance only and are intended to give a fair overall summary of the property. They do not form part of any contract or offer, and should not be relied upon as a statement or representation of fact. Measurements, areas and distances are approximate only. Photographs may include lifestyle shots and pictures of local views. No undertaking is given as to the structural condition of the property, or any necessary consents or the operating ability or efficiency of any service, system or appliance. Please ask if you would like further information, especially before you travel to the property.

Location

The thriving town of Midhurst resides on the Surrey and Sussex border. Full of listed buildings, attractive shops and narrow lanes, it's also blessed with charming hotels and restaurants. There are also primary schools, an Academy College, leisure complex, medical centre, a library, Sainsburys and the Cowdray Park golf course. The town has previously been declared as one of the best places to live in the South East by a Sunday Times survey which was based on a number of criteria including lifestyle, crime rate, schooling and house prices.

Discover more extensive havens of choice in nearby Haslemere and Chichester, while neighbouring Petworth has a variety of shops and National Trust parkland. There are plenty of leisure pursuits from walking, cycling and horse riding in the National Park, to shooting and fishing in the historic Cowdray Park. Sailors and theatre-goers will love Chichester and for racing enthusiasts, glorious Goodwood is within a short drive too.

For more information on the town log on to the visitmidhurst.com website.



