



19 Grove Road, Selsey

Guide Price £325,000

19 Grove Road

Selsey, Chichester

In need of modernisation throughout, this 1930's detached bungalow with three bedrooms, NO onward chain and character features such as picture rails in most rooms.

Located to the south of Selsey and lying almost equidistant to both the high street and beach. To the front is a covered veranda and 2 glazed doors, 1 opening to the living room and the other an entrance hall. Entering via the door into the entrance hall, further doors then lead off to the living room, kitchen, three bedrooms and shower room. In addition to the principal rooms and accessible from the kitchen there is a sun room which in turn provides direct access into the rear garden.

Externally the bungalow enjoys a driveway with parking for several cars and partially covered by a car port and leads to an extended tandem garage. The front & rear gardens are laid mainly to lawn with the rear garden also benefiting from a generous paved seating area.

Council Tax band: C

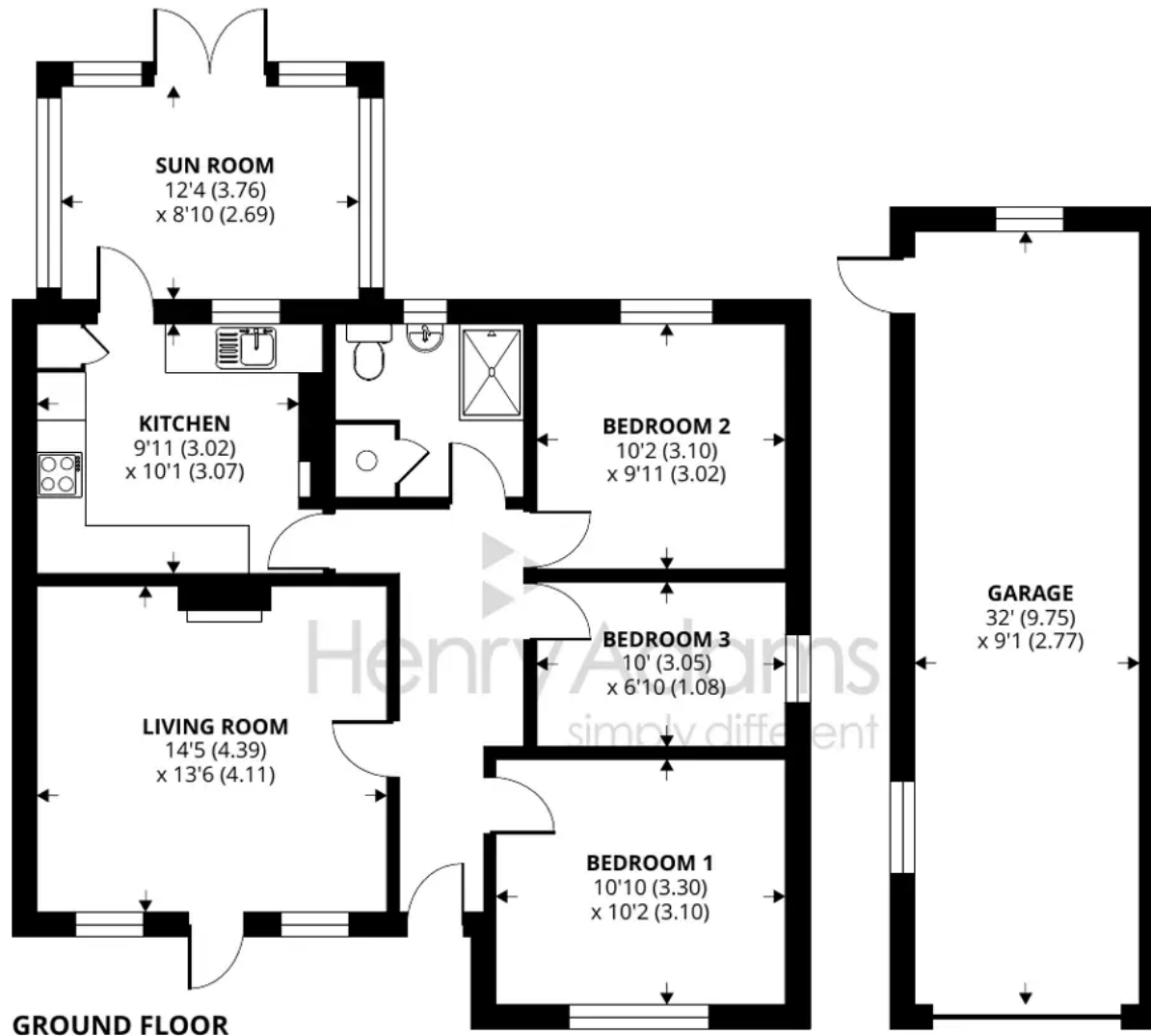
Tenure: Freehold

EPC Energy Efficiency Rating: E

EPC Environmental Impact Rating: F

- Detached 1930's Bungalow
- Three Bedrooms
- No Forward Chain
- 34' Tandem Garage
- In need of Modernisation





19 Grove Road, Selsey, PO20 0AS

Approximate Area = 921 sq ft / 85.6 sq m

Garage = 298 sq ft / 27.6 sq m

Total = 1219 sq ft / 113.2 sq m

For identification only - Not to scale



Floor plan produced in accordance with RICS Property Measurement Standards incorporating International Property Measurement Standards (IPMS2 Residential). © ntechcom 2022. Produced for Henry Adams. REF: 925078





Henry Adams - Selsey

Henry Adams LLP, 122 High Street, Selsey - PO20 0QE

01243 606789 • selsey@henryadams.co.uk • www.henryadams.co.uk/

Agents Note - Our particulars are for guidance only and are intended to give a fair overall summary of the property. They do not form part of any contract or offer, and should not be relied upon as a statement or representation of fact. Measurements, areas and distances are approximate only. Photographs may include lifestyle shots and pictures of local views. No undertaking is given as to the structural condition of the property, or any necessary consents or the operating ability or efficiency of any