



## 18 Greenfields, Middleton-on-Sea

A ground floor apartment in the centre of Middleton-on-Sea village.



- ▶ Purpose Built Flat
- ▶ Sitting Room
- ▶ Second Double Bedroom
- ▶ Central Village Location
- ▶ Patio Area
- ▶ Ground Floor
- ▶ Principal Bedroom with En-suite
- ▶ Bathroom/WC
- ▶ Parking Space and Visitor Parking
- ▶ No Onward Chain

A two bedroom ground floor apartment forming part of the popular Berkeley Homes Greenfield development, built circa 2001, in the heart of Middleton-on-Sea village centre.

This apartment is situated in the north block and benefits from a patio area and communal garden space off of the sitting room and the principal bedroom. The principal bedroom has an en-suite shower room, as well as built-in storage. The well-proportioned accommodation also includes another double bedroom with built-in storage, kitchen and bathroom/WC.

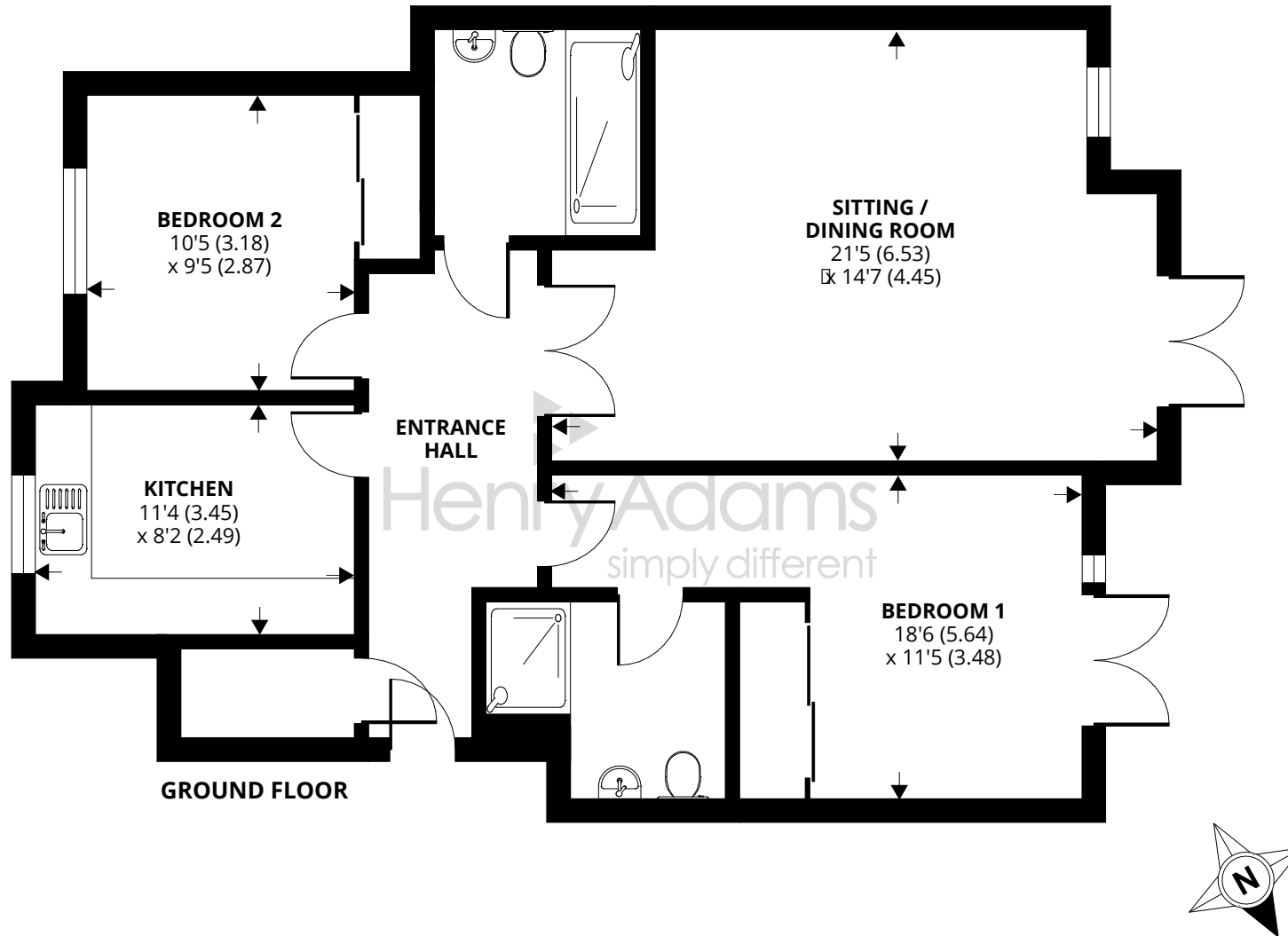
Outside, the property is set in communal gardens. There is also allocated parking and visitor parking.

Tenure: We understand there is a 999 year lease.

Maintenance Charge: We understand the maintenance charge is approximately £2,610 p.a.

Council Tax Band: D





Approximate Area = 929 sq ft / 86.3 sq m

For identification only - Not to scale



Agents Note - Our particulars are for guidance only and are intended to give a fair overall summary of the property. They do not form part of any contract or offer, and should not be relied upon as a statement or representation of fact. Measurements, areas and distances are approximate only. Photographs may include lifestyle shots and pictures of local views. No undertaking is given as to the structural condition of the property, or any necessary consents or the operating ability or efficiency of any service, system or appliance. Please ask if you would like further information, especially before you travel to the property.

## Location

The charming village of Middleton-on-Sea offers a wide range of local facilities including a doctors surgery, pharmacy, sports/social club, post office and a range of useful shops, café, fish and chip shop and a pub. Nearby attractions include Felpham Golf Club, a sailing club and the unspoilt beach. A regular bus service links the village to Bognor Regis which offers a more comprehensive range of amenities. Historic Arundel, the cathedral city of Chichester and the famous Goodwood motor circuit and racecourse can all be found within an 11 mile radius.

## Directions

From our office in Middleton-on-Sea bear right and continue to the mini-roundabout passing the Greenfields development on your right. Continue straight over the mini-roundabout into Elmer Road and take the first right into Shrubbs Drive. Take the first right into Penn Close and at the end of Penn Close you will find the entrance to Greenfields on your right.

16/11/23

