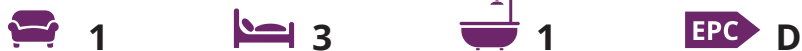




3 Hampden Close, Middleton-on-Sea

A detached bungalow with no chain and close to the village amenities.



- ▶ **Detached Bungalow**
- ▶ **Sitting/Dining Room**
- ▶ **Three Bedrooms**
- ▶ **Westerly Rear Garden**
- ▶ **Cul-De-Sac Location**
- ▶ **973 sqft of Accommodation**
- ▶ **Kitchen**
- ▶ **Bathroom and WC**
- ▶ **Driveway and Garage**
- ▶ **No Onward Chain**

This detached bungalow has been owned by the same family since 1976 and is now offered for sale with the advantage of no onward chain having been recently let. The property is located within a quiet cul-de-sac just a short distance from the Middleton-on-Sea village centre and range of local amenities.

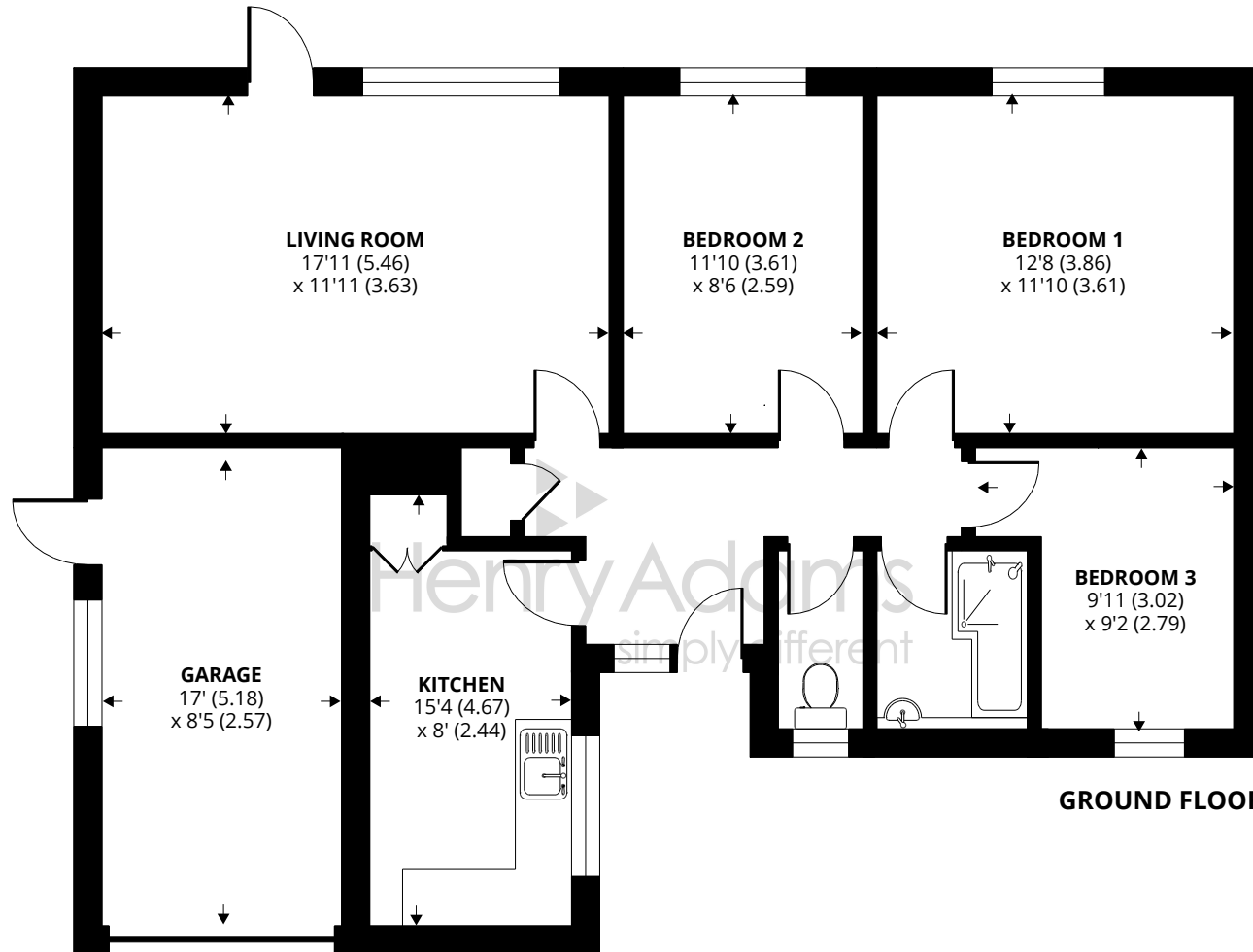
The accommodation measures 973 sqft and briefly comprises: entrance hall, kitchen/breakfast room, sitting/dining room with door to the rear garden, three bedrooms (two of which are double rooms) a bathroom and separate WC. A well preserved wooden parquet floor runs throughout the entrance hall, reception room and all three bedrooms and would make a wonderful feature.

The property benefits from double glazing and gas central heating, and we are informed that the gas boiler was replaced in December 2021.

Outside, there is an open-plan, lawned front garden and driveway which leads to the garage. The rear garden is mainly laid to lawn with borders and enjoys a westerly aspect.

Council Tax Band: D





Approximate Area = 973 sq ft / 90.3 sq m (includes garage)

For identification only - Not to scale



Agents Note - Our particulars are for guidance only and are intended to give a fair overall summary of the property. They do not form part of any contract or offer, and should not be relied upon as a statement or representation of fact. Measurements, areas and distances are approximate only. Photographs may include lifestyle shots and pictures of local views. No undertaking is given as to the structural condition of the property, or any necessary consents or the operating ability or efficiency of any service, system or appliance. Please ask if you would like further information, especially before you travel to the property.

Location

Hampden Close is located within a short distance of the Middleton-on-Sea village centre which offers a range of local facilities including sports club, playing fields, pharmacy, post office, newsagents and hardware store. Nearby sailing facilities are available at Felpham along with sports centre with swimming pool and golf club. The cathedral city of Chichester and the famous Goodwood motor circuit can be found within approximately eleven miles from Middleton-on-Sea.

What 3 Words: ///nutty.shoulders.dazzling

24/11/23

