



Flat 6 Middleton Place, Middleton Road, Middleton-on-Sea

A two bedroom first floor apartment, close to amenities and the sea in Middleton-on-Sea.



- ▶ **First Floor Apartment of 807 Sqft**
- ▶ **Generous Sitting/Dining Room**
- ▶ **Shower Room**
- ▶ **Garage in Courtyard**
- ▶ **125 Year Lease Commencing 2011**
- ▶ **Two Bedrooms**
- ▶ **Modern Kitchen/Breakfast Room**
- ▶ **Private Entrance**
- ▶ **Village Centre Location**
- ▶ **No Onward Chain**

This two bedroom flat is nestled within the heart of the picturesque village of Middleton-on-Sea, with all of the local amenities to hand.

Once inside you are immediately welcomed by the light and generous accommodation. The sitting/dining room offers an excellent amount of space and enjoys a bright southerly aspect with a view towards the duckpond and green across the road. Adjacent to the sitting room is the fully-equipped kitchen, fitted with a range of white high gloss units with plenty of countertops and space for a number of appliances. There is also a breakfast bar.

The two bedrooms are both double rooms each served by a shower room.

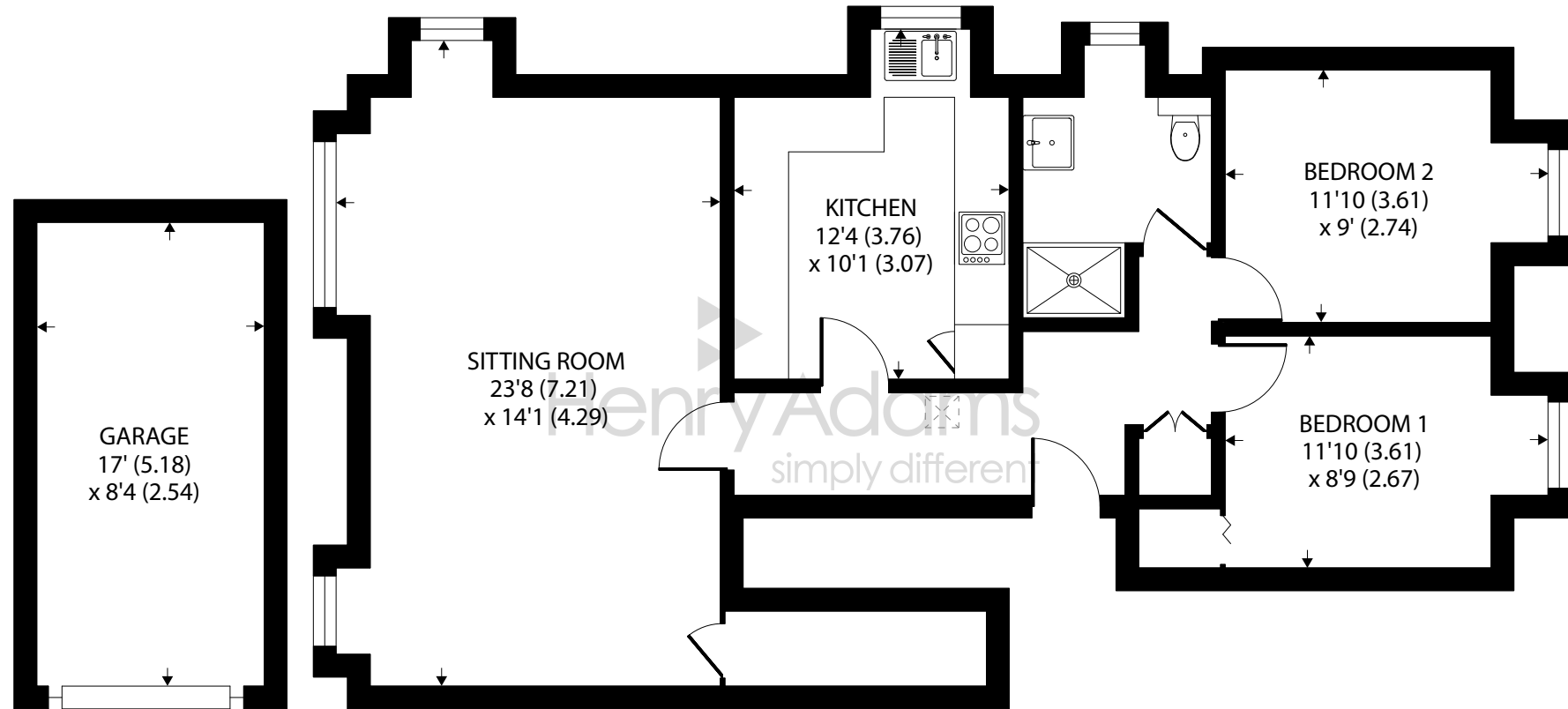
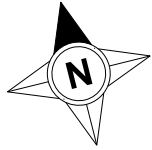
Outside, a garage will be found in a courtyard situated behind the development and parking is on a first come first serve basis.

Tenure: We understand there is the remainder of a 125 year lease from December 2011.

Maintenance/Ground Rent: We understand the ground rent payable is approximately TBC.

Council Tax Band: C





SECOND FLOOR

Approximate Area = 807 sq ft / 74.9 sq m

Garage = 142 sq ft / 13.2 sq m

Total = 949 sq ft / 88.1 sq m

For identification only - Not to scale



Agents Note - Our particulars are for guidance only and are intended to give a fair overall summary of the property. They do not form part of any contract or offer, and should not be relied upon as a statement or representation of fact. Measurements, areas and distances are approximate only. Photographs may include lifestyle shots and pictures of local views. No undertaking is given as to the structural condition of the property, or any necessary consents or the operating ability or efficiency of any service, system or appliance. Please ask if you would like further information, especially before you travel to the property.

Location

The charming village of Middleton-on-Sea offers a wide range of local facilities including a doctor's surgery, pharmacy, sports/social club, post office and a range of useful shops, café, fish and chip shop and a pub. Nearby attractions include Felpham Golf Club, a sailing club and the unspoilt beach. A regular bus service links the village to Bognor Regis which offers a more comprehensive range of amenities. Historic Arundel, the cathedral city of Chichester and the famous Goodwood motor circuit and racecourse can all be found within an 11 mile radius.

Directions

From our office in Middleton-on-Sea proceed in an easterly direction for a short distance. The property will be found on the left hand side, opposite the turning into Sea Lane.

31/08/23

