



16/17 The Street, Stedham, Midhurst, GU29 0NQ

An exciting opportunity to renovate a character property which sits proudly in a good sized plot in the heart of Stedham



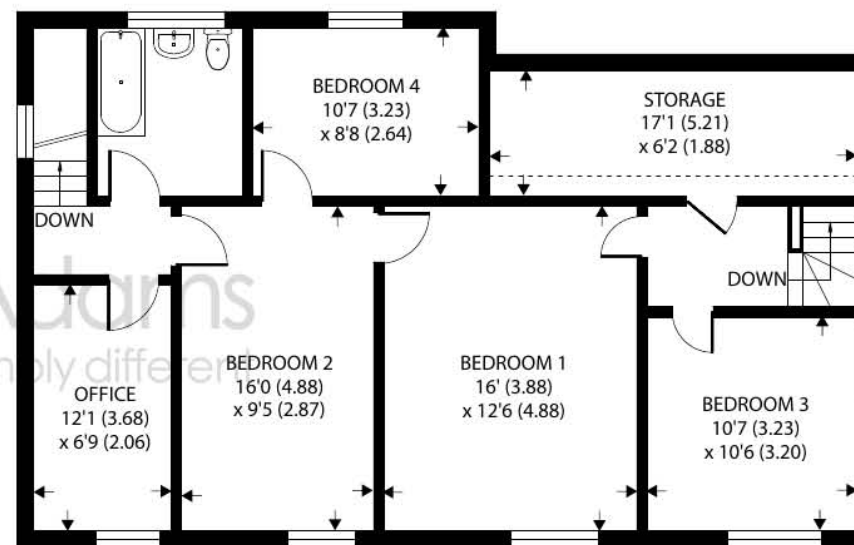
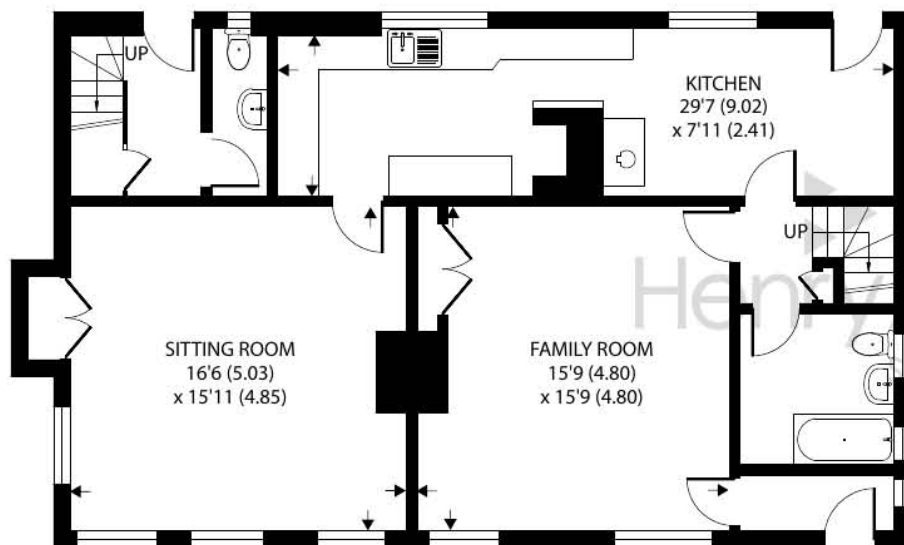
- ▶ No Onward Chain
- ▶ Positioned in the Heart of Stedham
- ▶ Good Sized Garden
- ▶ Sought After Location
- ▶ Village Pub, Green and Sports Hub
- ▶ In Need of Updating
- ▶ Four/Five Bedrooms
- ▶ Retained Character Features
- ▶ Open Fireplaces
- ▶ Two Reception Rooms with Open Fires

Welcome to this charming stone-built detached house nestled in the picturesque village of Stedham, West Sussex. This unique property, which was formerly two cottages, presents an exceptional opportunity for those seeking a home filled with character and potential. Offering four bedrooms, two bathrooms, and two inviting reception rooms, this residence is awaiting a discerning buyer who is ready to bring their personal touch and transform it into a dream home.

Upon entering, you are greeted by a sense of history and rustic charm, as the original stone walls and exposed beams showcase the property's heritage. The ground floor boasts two generously sized reception rooms, both featuring delightful open fireplaces, creating cosy spaces perfect for relaxing or entertaining guests. These rooms provide the ideal backdrop for creating warm and inviting atmospheres for family gatherings or intimate evenings. The kitchen runs along the back of the property with views over the garden. The first floor accommodates the four bedrooms, providing ample space for a growing family or guests. The bedrooms are well-proportioned, allowing for creative interior design ideas to flourish. Two bathrooms which are in need of updating, are conveniently located, one on the ground floor and one on the first, ensuring convenience and functionality.

Outside, the property benefits from a good-sized garden, offering plenty of space for outdoor activities and gardening. With a little imagination, this blank canvas can be transformed into a peaceful oasis bursting with colourful borders.





Oakwood Cottage, 16 The Street, Stedham, Midhurst, GU29

Approximate Area = 1867 sq ft / 173.4 sq m

Limited Use Area(s) = 96 sq ft / 8.9 sq m

Total = 1963 sq ft / 182.3 sq m

For identification only - Not to scale



Floor plan produced in accordance with RICS Property Measurement Standards incorporating International Property Measurement Standards (IPMS2 Residential). © nichecom 2023. Produced for Henry Adams. REF: 1005803

Agents Note - Our particulars are for guidance only and are intended to give a fair overall summary of the property. They do not form part of any contract or offer, and should not be relied upon as a statement or representation of fact. Measurements, areas and distances are approximate only. Photographs may include lifestyle shots and pictures of local views. No undertaking is given as to the structural condition of the property, or any necessary consents or the operating ability or efficiency of any service, system or appliance. Please ask if you would like further information, especially before you travel to the property.

Location and Amenities

Stedham is a picturesque village nestled in the scenic countryside of West Sussex. With its charming rural setting, historical landmarks, and warm community spirit, Stedham captures the essence of an idyllic English village.

Surrounded by rolling hills and lush green fields, Stedham offers a tranquil escape from the hustle and bustle of city life. The village is located within the South Downs National Park, renowned for its outstanding natural beauty and abundant wildlife. Visitors can explore the numerous walking trails that crisscross the area, immersing themselves in the serene countryside and enjoying impressive views of the landscape.

At the heart of Stedham lies its historic village centre, characterised by traditional thatched-roof cottages and quaint, timber-framed buildings. The village has a rich heritage dating back centuries, and its charming architecture reflects its long-standing history. The picturesque Stedham Church, with its striking spire, stands as a prominent landmark and a testament to the village's historical significance.

