



Flat3, 37 Skylark Avenue

A light & spacious two bedroom apartment situated in a requested location



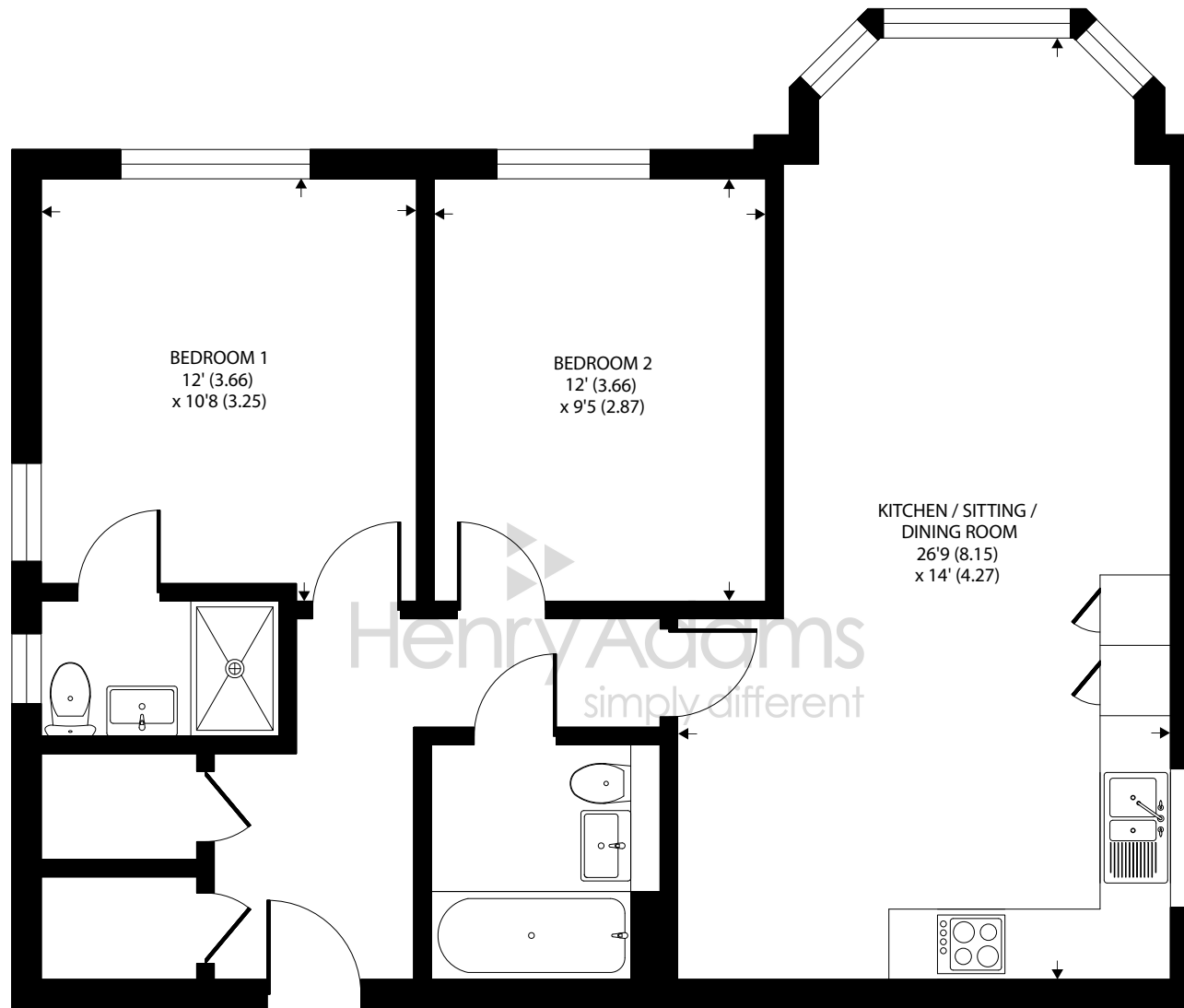
- ▶ Light & Spacious Two bedroom Apartment
- ▶ Two Double Bedrooms
- ▶ Modern Bathroom
- ▶ Stylish Kitchen
- ▶ Allocated Parking
- ▶ Modern Open plan Living
- ▶ En Suite
- ▶ Integrated Appliances
- ▶ Ideal First time Home or Investment
- ▶ Viewing Advised

An opportunity to purchase this light & spacious two bedroom apartment situated on the first floor.

The property comes with allocated parking and would make an excellent investment or first time home. The entrance hall is very spacious and has two large storage cupboards. The open plan kitchen / dining/ sitting room offers modern living and is the perfect area for entertaining family and friends. The kitchen is modern with a matching range of wall and base units, integrated appliances and tiled flooring. The two bedrooms are both large double rooms with bedroom one benefiting from a stylish en-suite. There is also a fully tiled family bathroom.

Services Charge per annum - £2500





FIRST FLOOR

Flat 3, 37 Skylark Avenue, Emsworth

Approximate Area = 764 sq ft / 70.9 sq m

For identification only - Not to scale



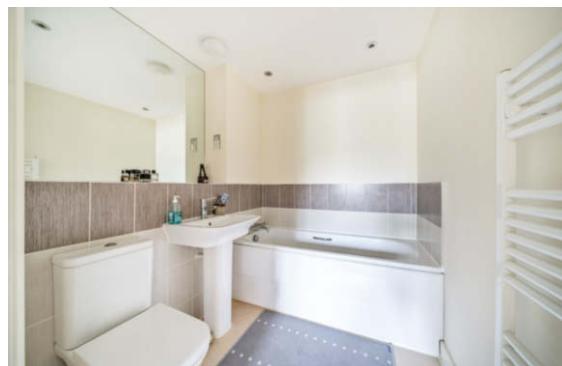
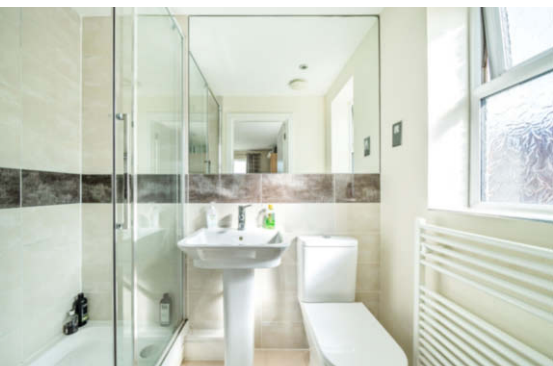
Floor plan produced in accordance with RICS Property Measurement Standards incorporating International Property Measurement Standards (IPMS2 Residential). © njchecom 2023. Produced for Henry Adams. REF: 1040745

Agents Note - Our particulars are for guidance only and are intended to give a fair overall summary of the property. They do not form part of any contract or offer, and should not be relied upon as a statement or representation of fact. Measurements, areas and distances are approximate only. Photographs may include lifestyle shots and pictures of local views. No undertaking is given as to the structural condition of the property, or any necessary consents or the operating ability or efficiency of any service, system or appliance. Please ask if you would like further information, especially before you travel to the property.

Situation

Skylark Avenue is situated to the north of Emsworth on the popular Redlands Grange development in convenient proximity to the railway station and the village centre. Close to both the A27 and A3M trunk roads, the property is very well connected. The railway station at Emsworth is on the Southampton to Brighton Line, whilst nearby Havant has direct trains to London Waterloo and London Victoria via Gatwick Airport. The historic city of Chichester lies to the East with its Festival Theatre and racing at Goodwood whilst the foreshore of Chichester Harbour to the south provides opportunities for the sailor and birdwatcher alike with many sailing clubs and coastal walks.

3rd October 2023



To arrange a viewing call **01243 377773** View details online at henryadams.co.uk