



## 16 Chestnut Drive, Thakeham

An immaculately presented home in a corner plot built by Oakford Homes to a high standard on the desirable Abingworth development.

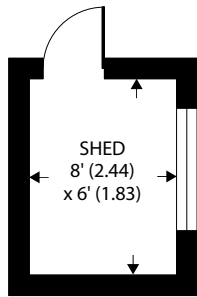


- ▶ **Sitting room opening to patio terrace**
- ▶ **Kitchen with dining area and doors to garden**
- ▶ **Cloakroom**
- ▶ **Main bedroom with en-suite and built in wardrobes**
- ▶ **Two further double bedrooms with wardrobes to bedroom three**
- ▶ **Family bathroom**
- ▶ **Large landscaped garden**
- ▶ **Parking for two vehicles**
- ▶ **Remainder of NHBC**

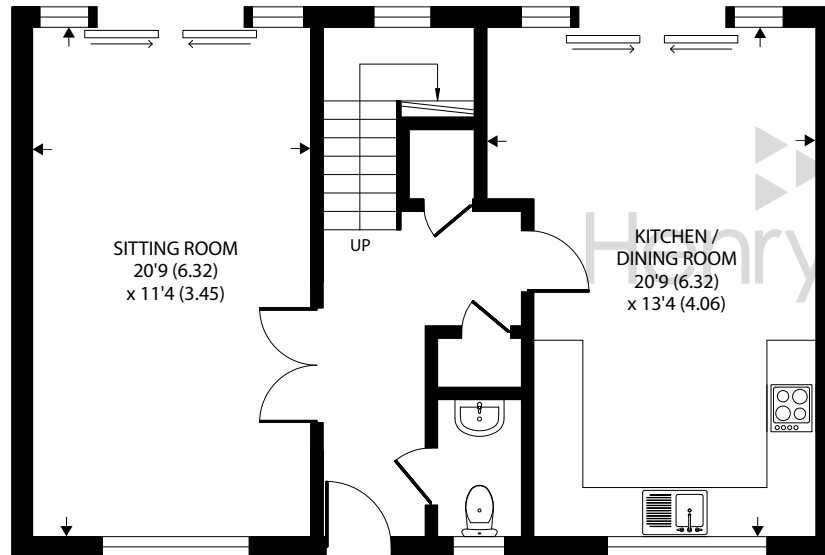
Chestnut Drive is on the Abingworth Meadows development built by Oakford Homes in 2019. Set in a corner plot giving you a larger garden and in a tucked away position is number 16 which is a beautifully presented home. On entering the hallway, the tiled ceramic flooring flows through to the kitchen / dining room. The kitchen is fitted with a range of Smeg appliances including gas hob, twin ovens, one being a combination microwave, dishwasher and fridge / freezer, there is ample space for a dining table and there are doors opening to the garden. The sitting room being double aspect with window to the front and doors to the garden is a lovely light room. The landing has a double height window going up the stairs and on the first floor there are three double bedrooms, the main having fitted wardrobes and an en-suite shower room. Bedroom two also has fitted wardrobes and there is a family bathroom. There is also a large utility cupboard housing the water tank, washing machine and tumble dryer.

To the front there is parking for several vehicles and to the rear of the property the garden has been lovingly planted with a variety of plants, shrubs and flowers creating a tranquil haven, the patio area is a very good size and it is currently laid out with four sitting areas for entertaining and relaxing, there is also a good size lawn ideal for children to play.

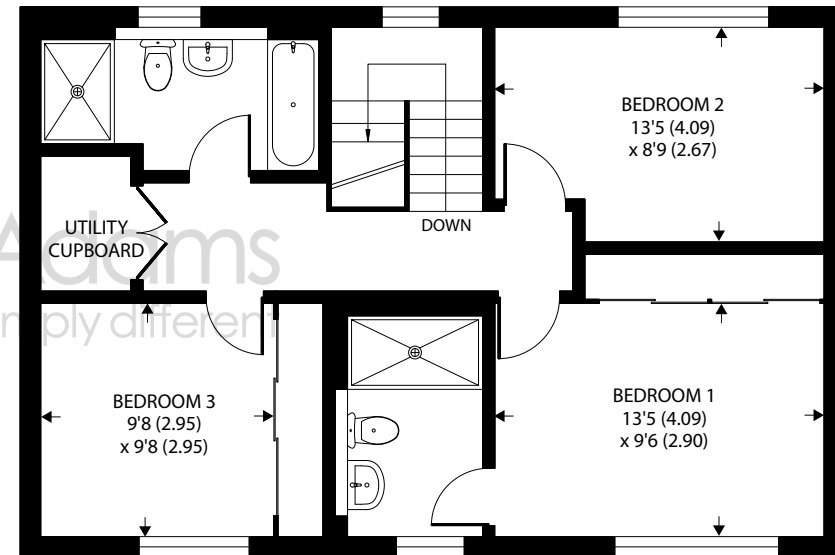




OUTBUILDING



GROUND FLOOR



FIRST FLOOR

Approximate Area = 1324 sq ft / 123 sq m

Outbuilding = 48 sq ft / 4.5 sq m

Total = 1372 sq ft / 127.5 sq m

For identification only - Not to scale



Agents Note - Our particulars are for guidance only and are intended to give a fair overall summary of the property. They do not form part of any contract or offer, and should not be relied upon as a statement or representation of fact. Measurements, areas and distances are approximate only. Photographs may include lifestyle shots and pictures of local views. No undertaking is given as to the structural condition of the property, or any necessary consents or the operating ability or efficiency of any service, system or appliance. Please ask if you would like further information, especially before you travel to the property.

## Location

Thakeham is a quintessential English village with pretty period cottages and homes together with a pub and church. The development of Abingworth Meadows has a village store and Cafe provide a hub for the village near the Cricket pitch and a village hall along with a vets. The larger village of Storrington situated at the foot of the South Downs and giving access to the South Downs National Park is just over two miles away and provides a good range of local shops and amenities including a Waitrose Store, library, health centre, dentists together with a wide variety of sports and social clubs. The nearest train station is at Billingshurst approximately 5 miles to the north with services to London Victoria and the coast. The larger centres of Horsham and Worthing are approximately 13 and 12 miles respectively. On the doorstep of Thakeham are a number of lovely walks to enjoy with your four legged friends.

