



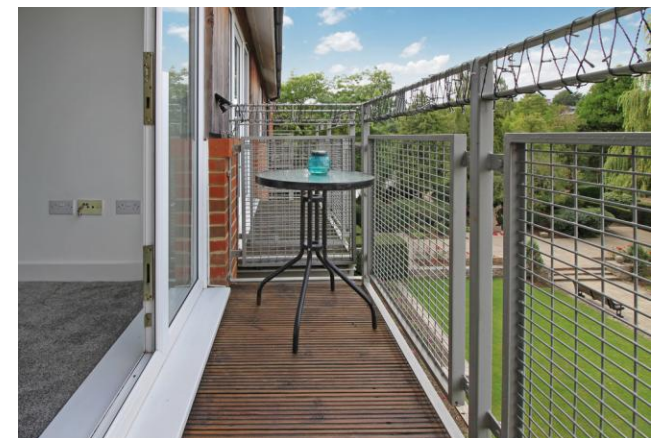
2 Bedrooms Apartment **£189,995**

16 Clifton House, 36a Groundwell Road, Old Town, Swindon, SN1 2PB

mcfarlane
property.com

2 Bedrooms Apartment Swindon, Old Town

- Two Double Bedrooms
 - Private Gated Access
 - South Facing Balcony
 - En-Suite and Wardrobes to Master
 - Open Plan Living
 - Modern Kitchen
 - Modern En-suite and Bathroom
 - Secure Loft
 - Lift
-



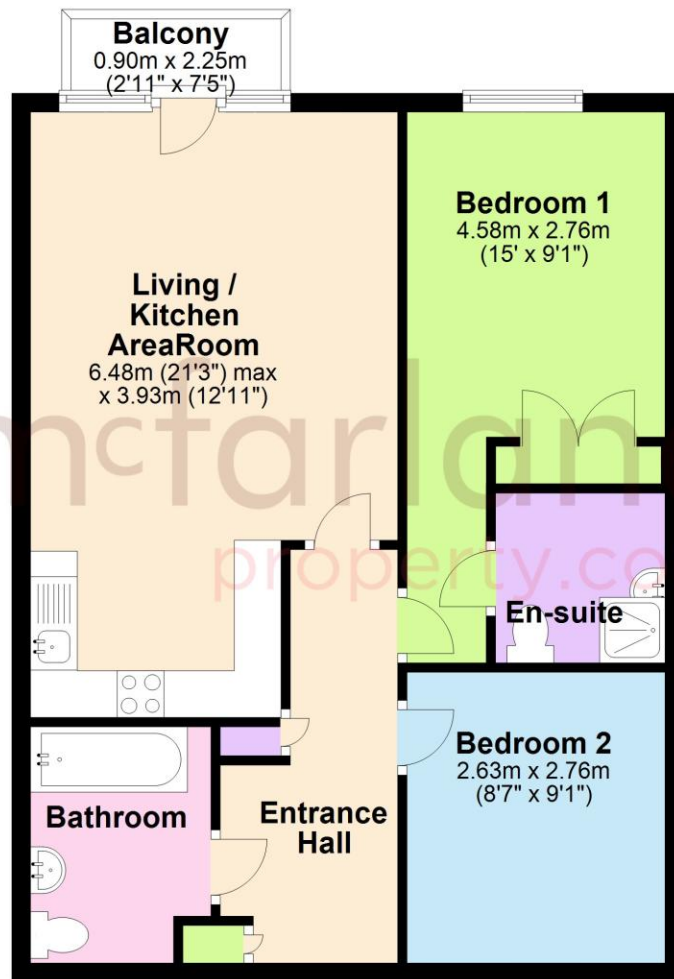
An ideal First Time Buyer/Investment Purchase. Benefiting from stunning views over Queen's Park is this immaculate and modern two double bedroom second floor apartment with lift access. The property benefits from open plan living with a modern kitchen and South Facing balcony. The master bedroom has a built-in double wardrobe and an en-suite. There is also the benefit of gas central heating, loft and secured parking. Lease remaining 984yrs Ground Rent & Service Charges £750p.a.





Ground Floor

Approx. 62.8 sq. metres (676.2 sq. feet)



Total area: approx. 62.8 sq. metres (676.2 sq. feet)

We 
where you
LIVE

Our team are friendly, experienced and are all local. They know it better than they do their own living rooms and can help you find what you're looking for because **we love where we live.**

We would be delighted to show you around this property.

**Because every home
needs a personal touch.**

**If you would like to view this
property then please get in touch.**

📞 01793 296880

✉ oldtown@mcfarlaneproperty.com

mcfarlaneproperty.com

mcfarlane
property.com

Cricklade.

102 High Street
Cricklade SN6 6AA

📞 01793 751044

Marlborough.

106 High Street
Marlborough SN8 1LT

📞 01672 514380

Old Town.

28-30 Wood Street
Swindon SN1 4AB

📞 01793 296880

Swindon.

The Village Centre,
Redhouse SN25 2FW

📞 01793 296600

Agents Note: Whilst every care has been taken to prepare these sales particulars, they are for guidance purposes only. All measurements are approximate and are for general guidance purposes only and whilst every care has been taken to ensure their accuracy, they should not be relied upon and potential buyers are advised to recheck the measurements