



11 Fairway Lakes Village, Caldecott Hall

£210,000 Freehold

Beautiful 2-bed timber house with panoramic views, stunning kitchen/dining area, en-suite bedroom, utility room, and large lounge. Enjoy the scenery on the extended sun terrace. Ideal holiday home with gas fired underfloor heating, triple glazing, and proven success as a holiday let property.

Tenure: Freehold

Beautiful 2-bed timber house with panoramic views, stunning kitchen/dining area, en-suite bedroom, utility room, and large lounge. Enjoy the scenery on the extended sun terrace. Ideal holiday home with gas fired underfloor heating, triple glazing, and proven success as a holiday let property.

LOCATION

Fritton is a village in Norfolk, situated 5 miles south-west of Great Yarmouth and 6 miles northwest of Lowestoft. It is only 11 miles south of the city of Norwich and is home to a 70 acre common surrounded by old oak trees. Fritton Church, St Catherine, has a round tower and a fine rood screen that dates back to the 1500's. There are schools, pubs, beautiful walks and hospital/doctors nearby.

CALDECOTT HALL

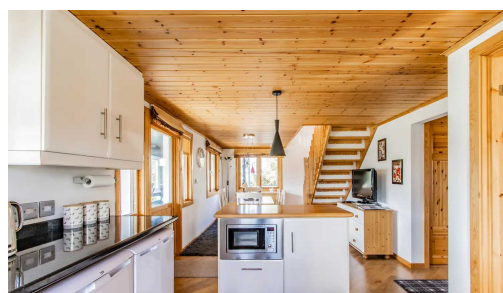
Situated in the sought-after location of Fritton, NR31, this immaculately presented 2 bedroom detached house is a remarkable find in the local property market. This property offers incredible value for money, boasting a range of desirable features



Beautiful 2-bed timber house with panoramic views, stunning kitchen/dining area, en-suite bedroom, utility room, and large lounge. Enjoy the scenery on the extended sun terrace. Ideal holiday home with gas fired underfloor heating, triple glazing, and proven success as a holiday let property.

LOCATION

Fritton is a village in Norfolk, situated 5 miles south-west of Great Yarmouth and 6 miles northwest of Lowestoft. It is only 11 miles south of the city of Norwich and is home to a 70 acre common surrounded by old oak trees



Beautiful 2-bed timber house with panoramic views, stunning kitchen/dining area, en-suite bedroom, utility room, and large lounge. Enjoy the scenery on the extended sun terrace. Ideal holiday home with gas fired underfloor heating, triple glazing, and proven success as a holiday let property.

LOCATION

Fritton is a village in Norfolk, situated 5 miles south-west of Great Yarmouth and 6 miles northwest of Lowestoft. It is only 11 miles south of the city of Norwich and is home to a 70 acre common surrounded by old oak trees. Fritton Church, St Catherine, has a round tower and a fine rood screen that dates back to the 1500's. There are schools, pubs, beautiful walks and hospital/doctors nearby.

CALDECOTT HALL

Situated in the sought-after location of Fritton, NR31, this immaculately presented 2 bedroom detached house is a remarkable find in the local property market. This property offers incredible value for money, boasting a range of desirable features and amenities that are sure to impress any prospective homeowner or investor. Onsite indoor swimming pool, two golf courses and a restaurant/bar.

As you step into this charming property, you will immediately be struck by the tasteful open-plan living space. The carefully designed layout seamlessly integrates the living, dining, and kitchen areas, creating an inviting and spacious atmosphere perfect for entertaining guests or relaxing with family. The underfloor heating ensures a cosy and comfortable environment all year round.

The accommodation continues to impress with two well-proportioned bedrooms, offering ample space for rest and relaxation. Both bedrooms benefit from plenty of natural light, creating a bright and uplifting ambience. The contemporary bathroom guarantees modern comfort, complete with high-quality fixtures and fittings.

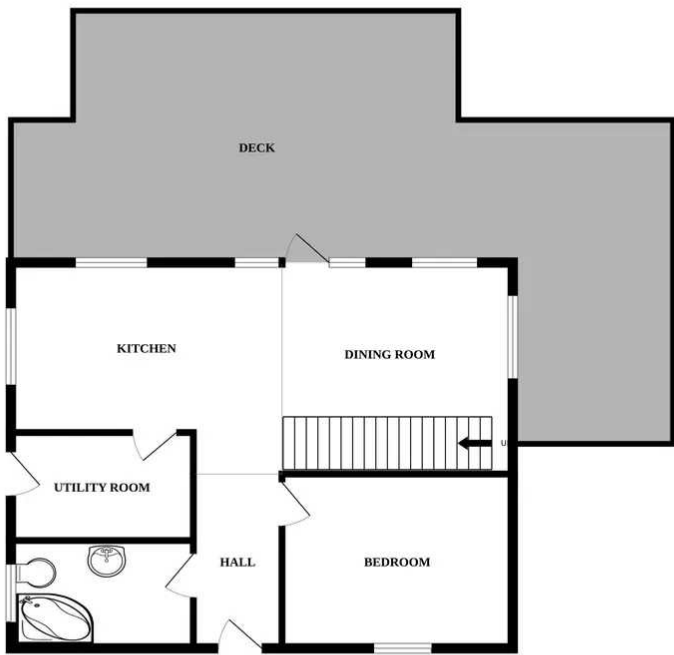
This property is perfect for generating additional income through successful holiday letting or accommodating guests, this versatile extra space provides endless possibilities for those seeking a profitable investment opportunity.

Boasting panoramic views, this property offers a peaceful and tranquil setting, allowing homeowners to unwind and appreciate

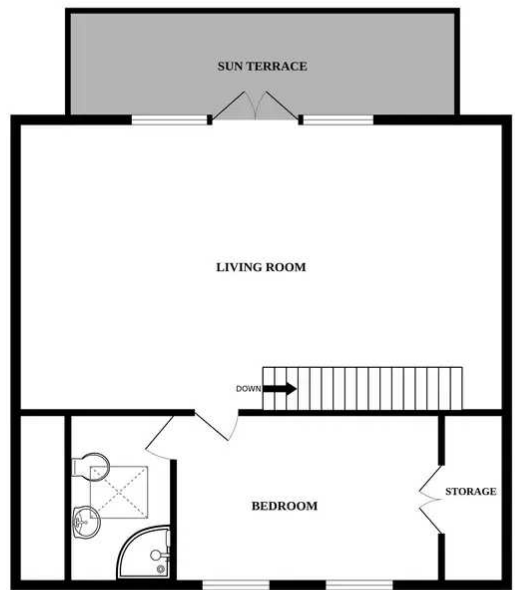


Minors & Brady

GROUND FLOOR



1ST FLOOR



Whilst every attempt has been made to ensure the accuracy of the floorplan contained here, measurements of doors, windows, rooms and any other items are approximate and no responsibility is taken for any error, omission or mis-statement. This plan is for illustrative purposes only and should be used as such by any prospective purchaser. The services, systems and appliances shown have not been tested and no guarantee as to their operability or efficiency can be given.
Made with Metropix ©2023

You can include any text here. The text can be modified upon generating your brochure.

You can include any text here. The text can be modified upon generating your brochure.

