



Charming 3-bed bungalow with convenient location. Welcoming entrance hall leads to a spacious living room and practical kitchen. 3 double bedrooms, family bathroom. Front drive, garage, and lawn. Generous rear garden with brick outbuilding. Indoor comfort and outdoor potential. Arrange viewing now.

### LOCATION

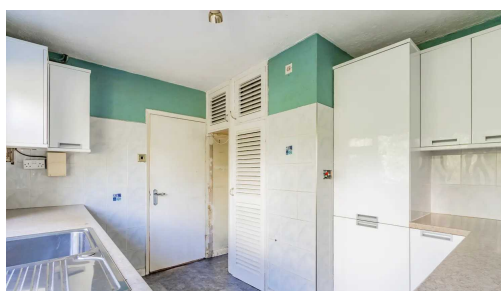
Claymore Gardens in Ormesby offers a charming residential enclave within the picturesque landscape of Norfolk. Nestled in this peaceful neighbourhood, residents enjoy the benefits of a serene and welcoming community. Ormesby itself boasts a rich history and a sense of timelessness, making it an ideal place for those seeking a tranquil village atmosphere. With easy access to essential amenities and the stunning natural beauty of the Norfolk Broads, Claymore Gardens offers a delightful blend of countryside living and modern convenience. Whether you're exploring the nearby woodlands, enjoying waterside activities, or simply savoring the quietude of village life, Claymore Gardens in Ormesby invites you to experience the best of Norfolk's countryside charm.



Charming 3-bed bungalow with convenient location. Welcoming entrance hall leads to a spacious living room and practical kitchen. 3 double bedrooms, family bathroom. Front drive, garage, and lawn. Generous rear garden with brick outbuilding. Indoor comfort and outdoor potential. Arrange viewing now.

### LOCATION

Claymore Gardens in Ormesby offers a charming residential enclave within the picturesque landscape of Norfolk. Nestled in this peaceful neighbourhood, residents enjoy the benefits of a serene and welcoming



Charming 3-bed bungalow with convenient location. Welcoming entrance hall leads to a spacious living room and practical kitchen. 3 double bedrooms, family bathroom. Front drive, garage, and lawn. Generous rear garden with brick outbuilding. Indoor comfort and outdoor potential. Arrange viewing now.

## LOCATION

Claymore Gardens in Ormesby offers a charming residential enclave within the picturesque landscape of Norfolk. Nestled in this peaceful neighbourhood, residents enjoy the benefits of a serene and welcoming community. Ormesby itself boasts a rich history and a sense of timelessness, making it an ideal place for those seeking a tranquil village atmosphere. With easy access to essential amenities and the stunning natural beauty of the Norfolk Broads, Claymore Gardens offers a delightful blend of countryside living and modern convenience. Whether you're exploring the nearby woodlands, enjoying waterside activities, or simply savoring the quietude of village life, Claymore Gardens in Ormesby invites you to experience the best of Norfolk's countryside charm.

## CLAYMORE GARDENS, ORMESBY

Presenting this charming three-bedroom detached bungalow, a wonderful blend of convenience and comfort awaits in a desirable location. As you step through the welcoming entrance hall, you'll immediately feel the sense of home that this property exudes.

The living room, thoughtfully designed, offers a space for relaxation and family gatherings. Adjacent to the living room, the kitchen provides a practical layout for your culinary needs, making meal preparation effortless. Three double bedrooms ensure ample space for restful retreats, with one of them boasting built-in wardrobes for added convenience. The family bathroom completes the interior, offering functionality for daily routines.

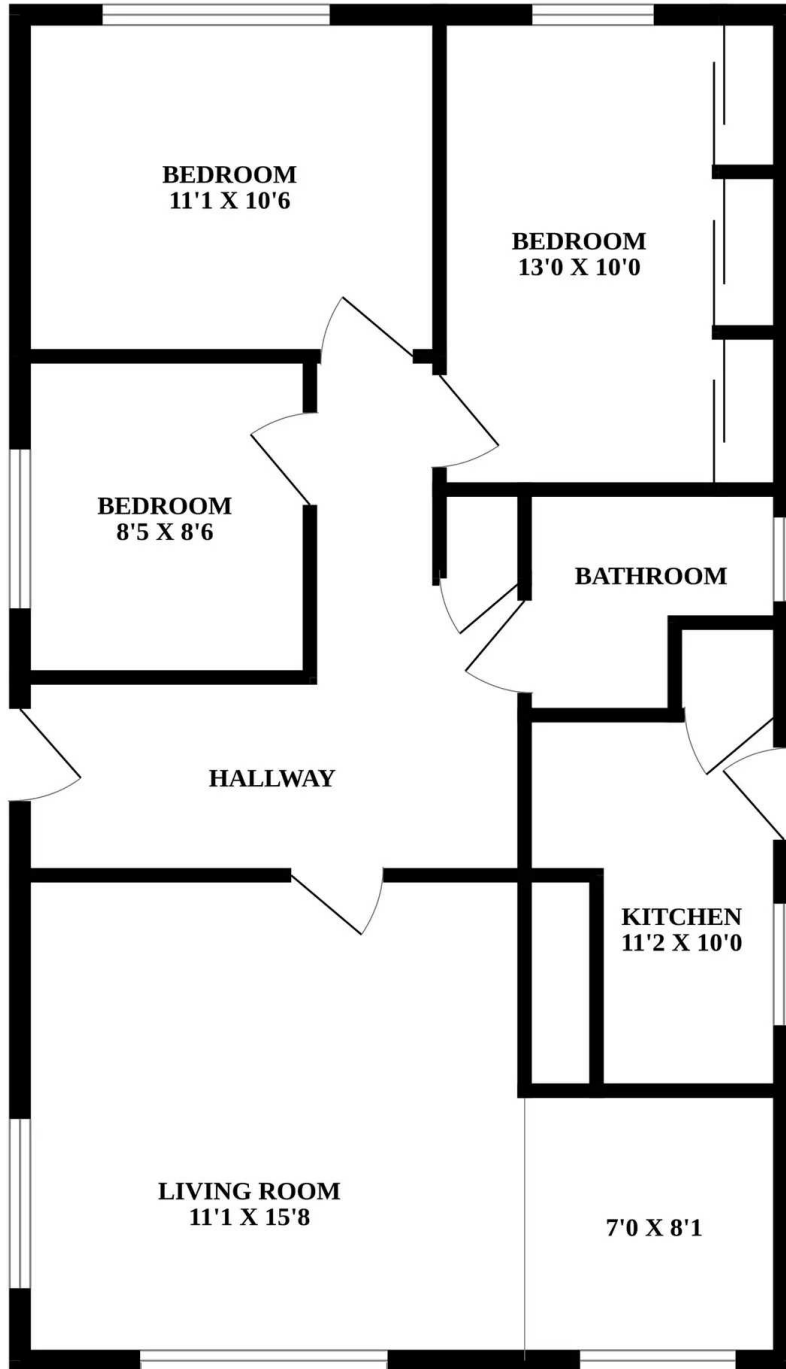
Outside, the front of the property features a spacious drive leading to a garage, providing both parking and storage solutions. A portion of lawn adds character to the frontage. To the rear, a generous lawn space beckons, offering plenty of room for outdoor activities and leisure. A charming pathway leads down to the bottom of the garden, where you'll discover a brick-built outbuilding, offering versatile usage options for hobbies, storage, or additional space for your needs.

This three-bedroom detached bungalow seamlessly combines indoor comfort with outdoor potential, making it an ideal place to call home. Don't miss the opportunity to explore the charm and convenience of this delightful property. Contact us today to arrange a viewing and make this bungalow your own.

## AGENTS NOTES



GROUND FLOOR



Whilst every attempt has been made to ensure the accuracy of the floorplan contained here, measurements of doors, windows, rooms and any other items are approximate and no responsibility is taken for any error, omission or mis-statement. This plan is for illustrative purposes only and should be used as such by any prospective purchaser. The services, systems and appliances shown have not been tested and no guarantee as to their operability or efficiency can be given.  
Made with Metropix ©2023

You can include any text here. The text can be modified upon generating your brochure.

You can include any text here. The text can be modified upon generating your brochure.

