



5 Vine Close, Hemsby

£250,000 Freehold

Guide Price £250,000-£275,000. Minors & Brady is delighted to introduce this charming two-bedroom detached bungalow, a perfect blend of comfort and convenience. With an inviting entrance hall, a well-designed living room/dining room, and a practical kitchen with a rear porch leading to the garden.

Council Tax band: C

Tenure: Freehold

Guide Price £250,000-£275,000. Minors & Brady is delighted to introduce this charming two-bedroom detached bungalow, a perfect blend of comfort and convenience. With an inviting entrance hall, a well-designed living room/dining room, and a practical kitchen with a rear porch leading to the garden.

LOCATION

Nestled in the idyllic community of Vine Close in Hemsby, this property enjoys a tranquil setting amidst the beauty of the Norfolk Broads. Hemsby itself offers a delightful coastal lifestyle, with its sandy beaches just a leisurely stroll away. The village center provides all the essential amenities, from local shops and eateries to schools and healthcare facilities. For outdoor enthusiasts, the nearby Norfolk Broads National Park offers endless opportunities for boating, fishing, and exploring the breathtaking natural landscapes. Vine Close provides a perfect blend of coastal living and rural charm, making it an ideal location for those seeking a peaceful retreat with easy access to both the sea and the countryside.

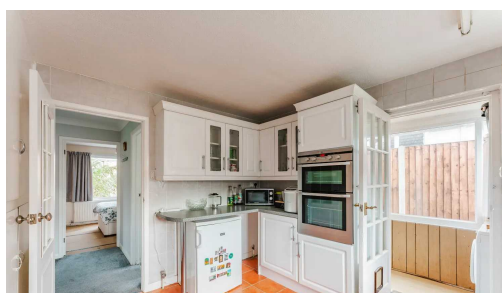
VINE CLOSE HEMSBY



Guide Price £250,000-£275,000. Minors & Brady is delighted to introduce this charming two-bedroom detached bungalow, a perfect blend of comfort and convenience. With an inviting entrance hall, a well-designed living room/dining room, and a practical kitchen with a rear porch leading to the garden.

LOCATION

Nestled in the idyllic community of Vine Close in Hemsby, this property enjoys a tranquil setting amidst the beauty of the Norfolk Broads. Hemsby itself offers a delightful coastal lifestyle, with its sandy beaches just a



Guide Price £250,000-£275,000. Minors & Brady is delighted to introduce this charming two-bedroom detached bungalow, a perfect blend of comfort and convenience. With an inviting entrance hall, a well-designed living room/dining room, and a practical kitchen with a rear porch leading to the garden.

LOCATION

Nestled in the idyllic community of Vine Close in Hemsby, this property enjoys a tranquil setting amidst the beauty of the Norfolk Broads. Hemsby itself offers a delightful coastal lifestyle, with its sandy beaches just a leisurely stroll away. The village center provides all the essential amenities, from local shops and eateries to schools and healthcare facilities. For outdoor enthusiasts, the nearby Norfolk Broads National Park offers endless opportunities for boating, fishing, and exploring the breathtaking natural landscapes. Vine Close provides a perfect blend of coastal living and rural charm, making it an ideal location for those seeking a peaceful retreat with easy access to both the sea and the countryside.

VINE CLOSE, HEMSBY

Welcome to this charming two-bedroom detached bungalow, a delightful retreat that offers both comfort and convenience. As you enter through the inviting entrance hall, you'll immediately feel at home in this well-designed space.

The living room/dining room is a bright and welcoming area, perfect for relaxation and entertaining. Natural light fills the room, creating an inviting ambiance for gatherings with family and friends.

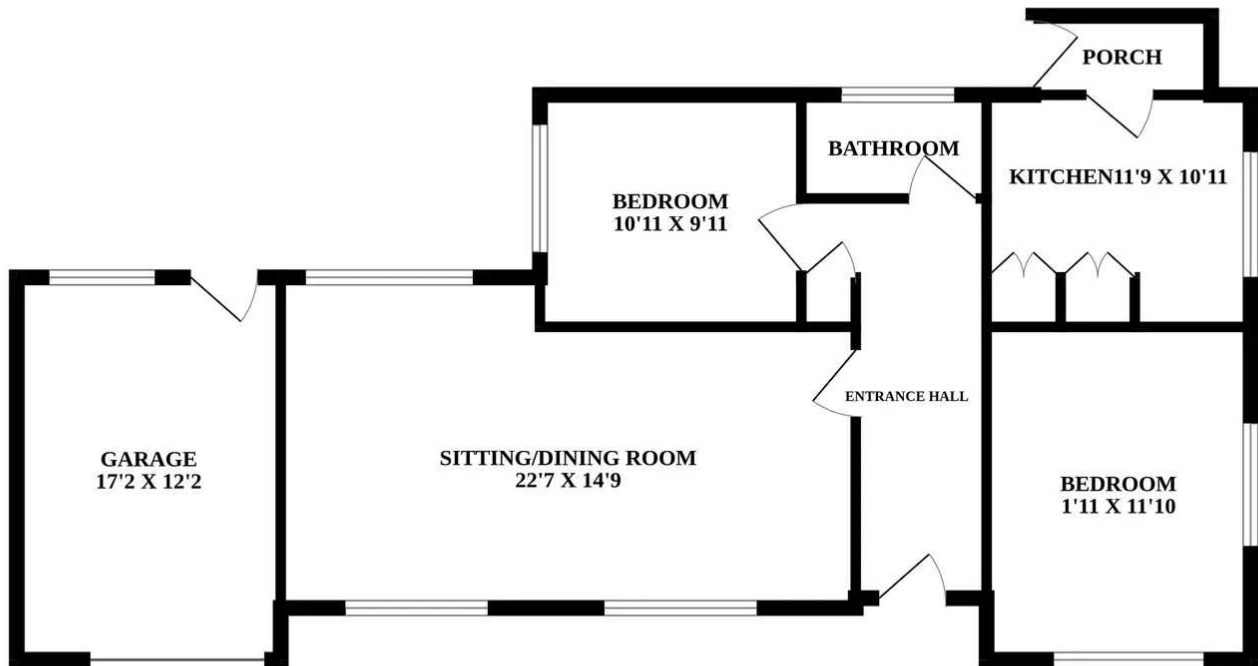
The kitchen is thoughtfully appointed and features a rear porch that provides easy access to the rear garden. Whether you're preparing meals or enjoying a morning coffee, this space is both practical and versatile.

This bungalow boasts two spacious double bedrooms, one of which offers fitted wardrobes, providing ample storage space for your belongings. The bathroom is tastefully designed and offers modern amenities for your daily comfort.

Outside, this property truly shines. The front of the bungalow features two driveways and a garage, ensuring ample parking space and secure storage. Surrounding the front and side of the property, you'll discover a well-maintained lawn adorned with mature shrubs, plants, and a majestic tree, creating a picturesque and tranquil setting as well as the tap having an external water source..



GROUND FLOOR



Whilst every attempt has been made to ensure the accuracy of the floorplan contained here, measurements of doors, windows, rooms and any other items are approximate and no responsibility is taken for any error, omission or mis-statement. This plan is for illustrative purposes only and should be used as such by any prospective purchaser. The services, systems and appliances shown have not been tested and no guarantee as to their operability or efficiency can be given.
Made with Metropix ©2023

You can include any text here. The text can be modified upon generating your brochure.

You can include any text here. The text can be modified upon generating your brochure.

