



64 Lighthouse Field, Hermanus Leisure Centre, Hermanus Drive

£115,000 Freehold

Guide £120,000-£130,000. Stunning 2-bed semi-detached house in sought-after Winterton-on-Sea. Contemporary living with open views. Ideal investment or charming home, potential for letting. Modern kitchen, inviting living area, 2 spacious bedrooms, luxury shower room. Tranquil location with communal lawn space.

Council Tax band: A

Tenure: Freehold

Stunning 2-bed semi-detached house in sought-after Winterton-on-Sea. Contemporary living with open views. Ideal investment or charming home, potential for letting. Modern kitchen, inviting living area, 2 spacious bedrooms, luxury shower room. Tranquil location with communal lawn space.

LOCATION

The sought-after village of Winterton-on-Sea is located on the stunning coastline and is known for its beautiful sandy beach which attracts great wildlife especially its seal conservation. It has a primary school, Post Office, grocery store, pub and fish and chip shop, as well as the beach café. Apart from the lovely sandy coast, Winterton is surrounded by countryside field views and the neighbouring villages of Scratby, Hemsby, Ormesby, Martham and only a short 9 miles from Great Yarmouth and 22 miles into the Norwich city centre, where you can enjoy a wide range of amenities, shopping facilities, leisure centres and the beauty of the rich cultural history.

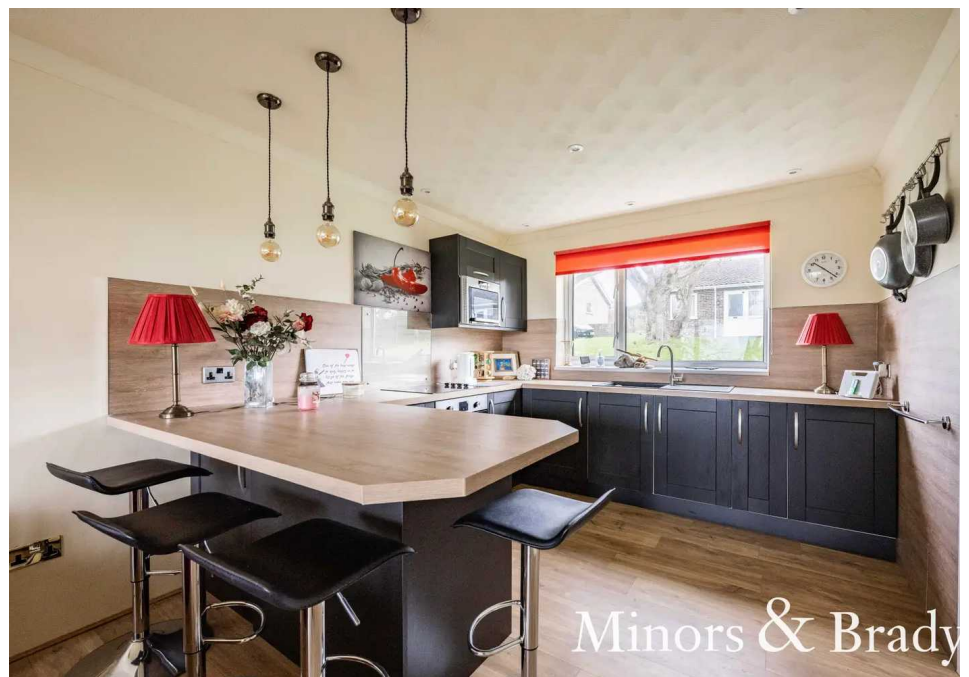
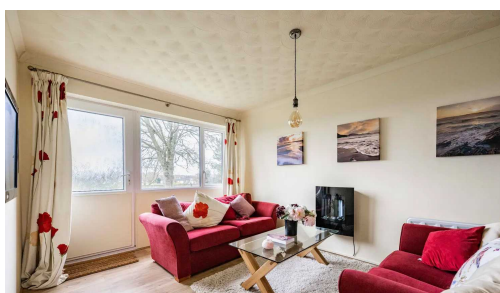
HERMANIS DRIVE WINTERTON



Stunning 2-bed semi-detached house in sought-after Winterton-on-Sea. Contemporary living with open views. Ideal investment or charming home, potential for letting. Modern kitchen, inviting living area, 2 spacious bedrooms, luxury shower room. Tranquil location with communal lawn space.

LOCATION

The sought-after village of Winterton-on-Sea is located on the stunning coastline and is known for its beautiful sandy beach which attracts great wildlife especially its seal conservation. It has a primary school



Stunning 2-bed semi-detached house in sought-after Winterton-on-Sea. Contemporary living with open views. Ideal investment or charming home, potential for letting. Modern kitchen, inviting living area, 2 spacious bedrooms, luxury shower room. Tranquil location with communal lawn space.

LOCATION

The sought-after village of Winterton-on-Sea is located on the stunning coastline and is known for its beautiful sandy beach which attracts great wildlife especially its seal conservation. It has a primary school, Post Office, grocery store, pub and fish and chip shop, as well as the beach café. Apart from the lovely sandy coast, Winterton is surrounded by countryside field views and the neighbouring villages of Scratby, Hemsby, Ormesby, Martham and only a short 9 miles from Great Yarmouth and 22 miles into the Norwich city centre, where you can enjoy a wide range of amenities, shopping facilities, leisure centres and the beauty of the rich cultural history.

HERMANUS DRIVE, WINTERTON

Introducing this stunning 2 bedroom semi-detached house, located in the sought-after seaside location of Winterton-on-Sea. The property offers contemporary living with delightful open views and ample communal lawn space.

This property is an ideal investment opportunity or a charming home for owner occupancy over the Christmas period, as well as the potential for letting between late March and late October.

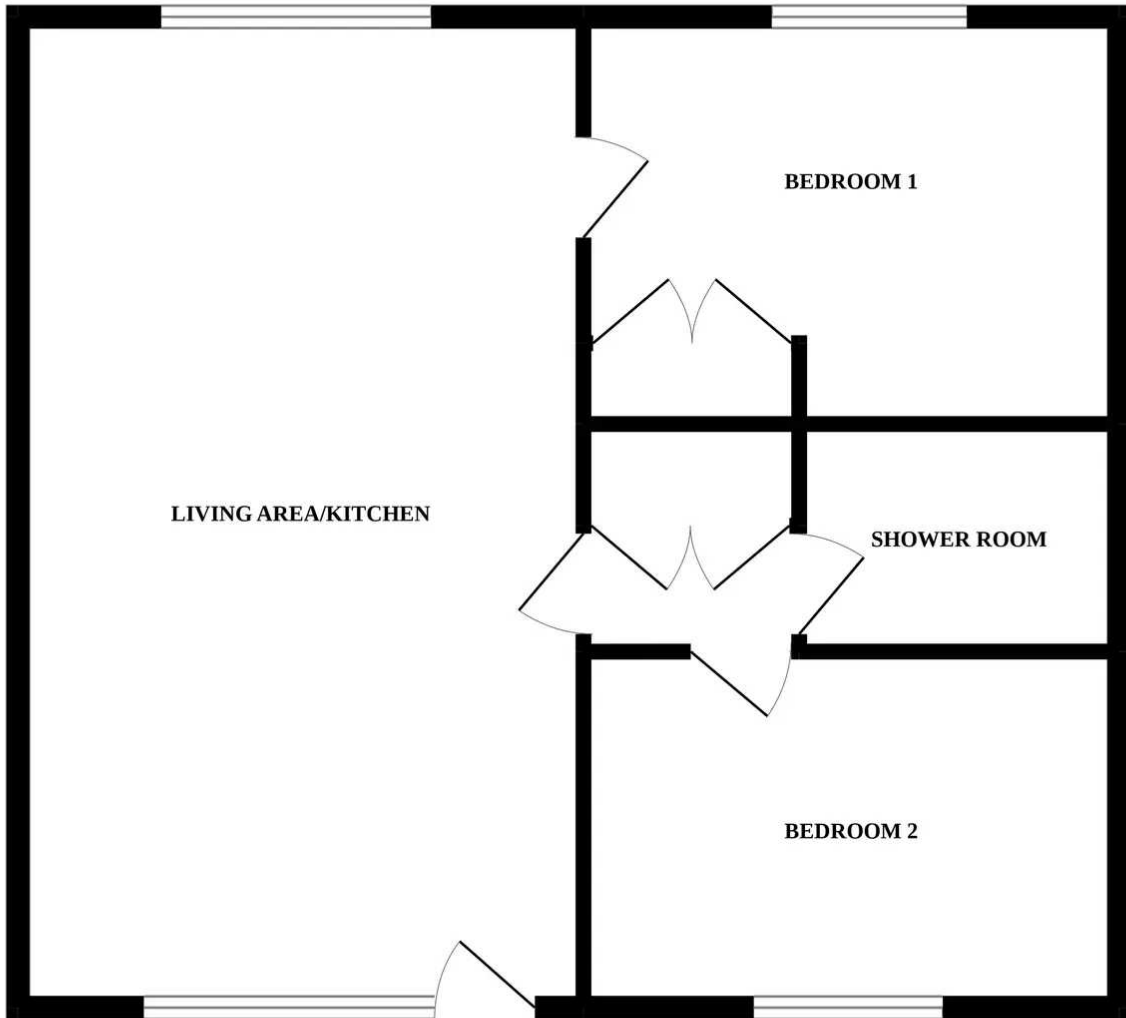
Upon entering the property, you are greeted by a modern and stylish fitted kitchen, complete with sleek cabinetry and high-quality appliances. The kitchen provides ample space for culinary creations and boasts a practical layout that is perfect for everyday living.

Adjacent to the kitchen is the inviting living area, featuring a warm and welcoming ambience. This space offers a comfortable setting for relaxation and entertainment, making it an ideal place to unwind after a long day.

The property comprises of two generously proportioned double bedrooms, both bathed in natural light and offering ample storage space. These bedrooms provide a peaceful sanctuary, ensuring a restful night's sleep and a tranquil retreat from the hustle and bustle of daily life.



GROUND FLOOR



Whilst every attempt has been made to ensure the accuracy of the floorplan contained here, measurements of doors, windows, rooms and any other items are approximate and no responsibility is taken for any error, omission or mis-statement. This plan is for illustrative purposes only and should be used as such by any prospective purchaser. The services, systems and appliances shown have not been tested and no guarantee as to their operability or efficiency can be given.
Made with Metropix ©2022

You can include any text here. The text can be modified upon generating your brochure.

You can include any text here. The text can be modified upon generating your brochure.

