



TURRET LEA
SAUCHIE ROAD, CRIEFF. PH7 4EL

IrvingGeddes
W.S. • Solicitors • Estate Agents

TURRET LEA, SAUCHIE ROAD, CRIEFF, PH7 4EL

We are delighted to offer for sale this traditional 4 bedroom semi-detached villa located in a prime residential area of Crieff. A modernised property in move-in condition & benefitting from off-street parking, private gardens & garage.

Set over 2 floors, the spacious layout comprises on the ground floor; ENTRANCE PORCH, HALLWAY with original flooring, large LOUNGE with bay window, open fire and recessed storage, DINING ROOM with open fire and original flooring, rear HALL with under-stair storage and doors to W.C., BEDROOM/STUDY and superb modern BREAKFASTING KITCHEN with a full range of quality units, breakfast bar & door to rear. The mid landing splits, with access to a DOUBLE BEDROOM at the rear and to a FAMILY BATHROOM & 2 FURTHER BEDROOMS to the front. Enjoying views to the hills surrounding Crieff including up to Ben Chonzie and Achnafree Hill and Torlum Hill. The upper hall has a skylight and hatch with integrated pull down ladder to fully-floored attic.

The fully enclosed gardens comprise a paved driveway to the side leading to a single detached garage. The front is laid to gravel with a planted bed. The back garden has a paved patio, an area of lawn with planted border, with a further seating area and log-store to the rear of the garage.

Turret Lea is a property full of character & charm, modernised and presented in true move-in condition. Enjoying a popular residential area, being within walking distance of the town centre and local parks. Likely to be a welcome addition to the market, early interest is advised.

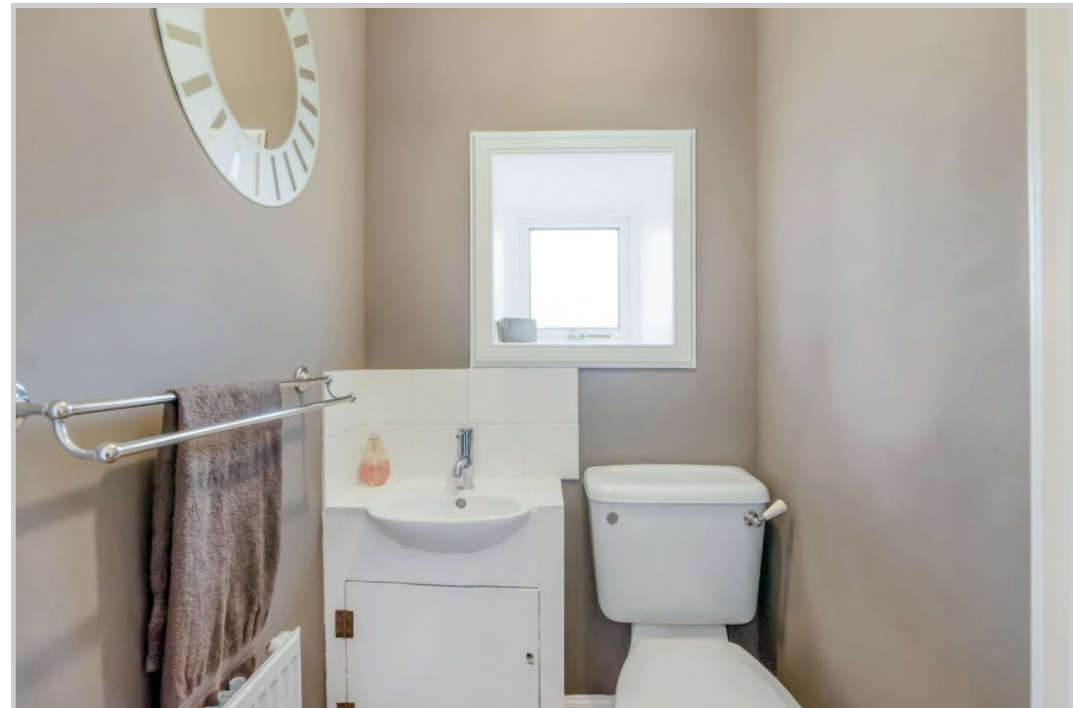




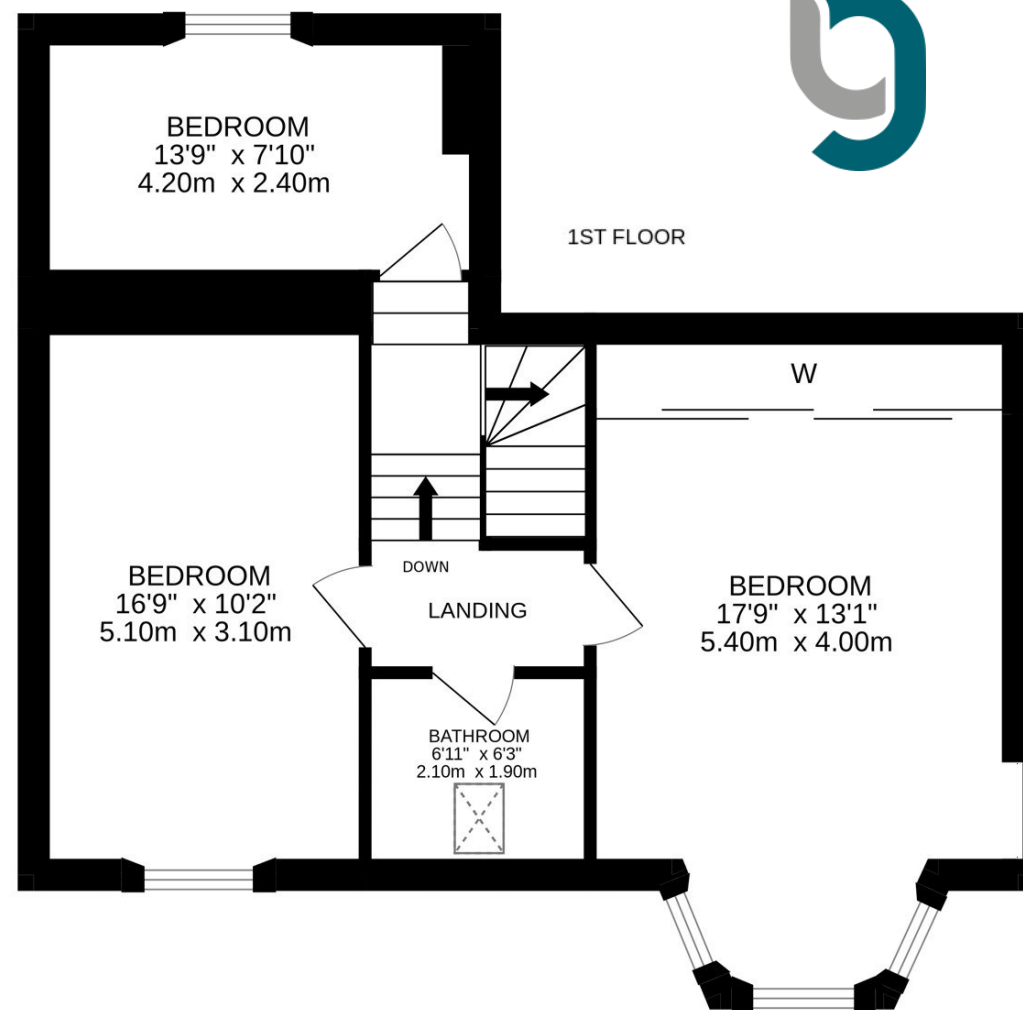
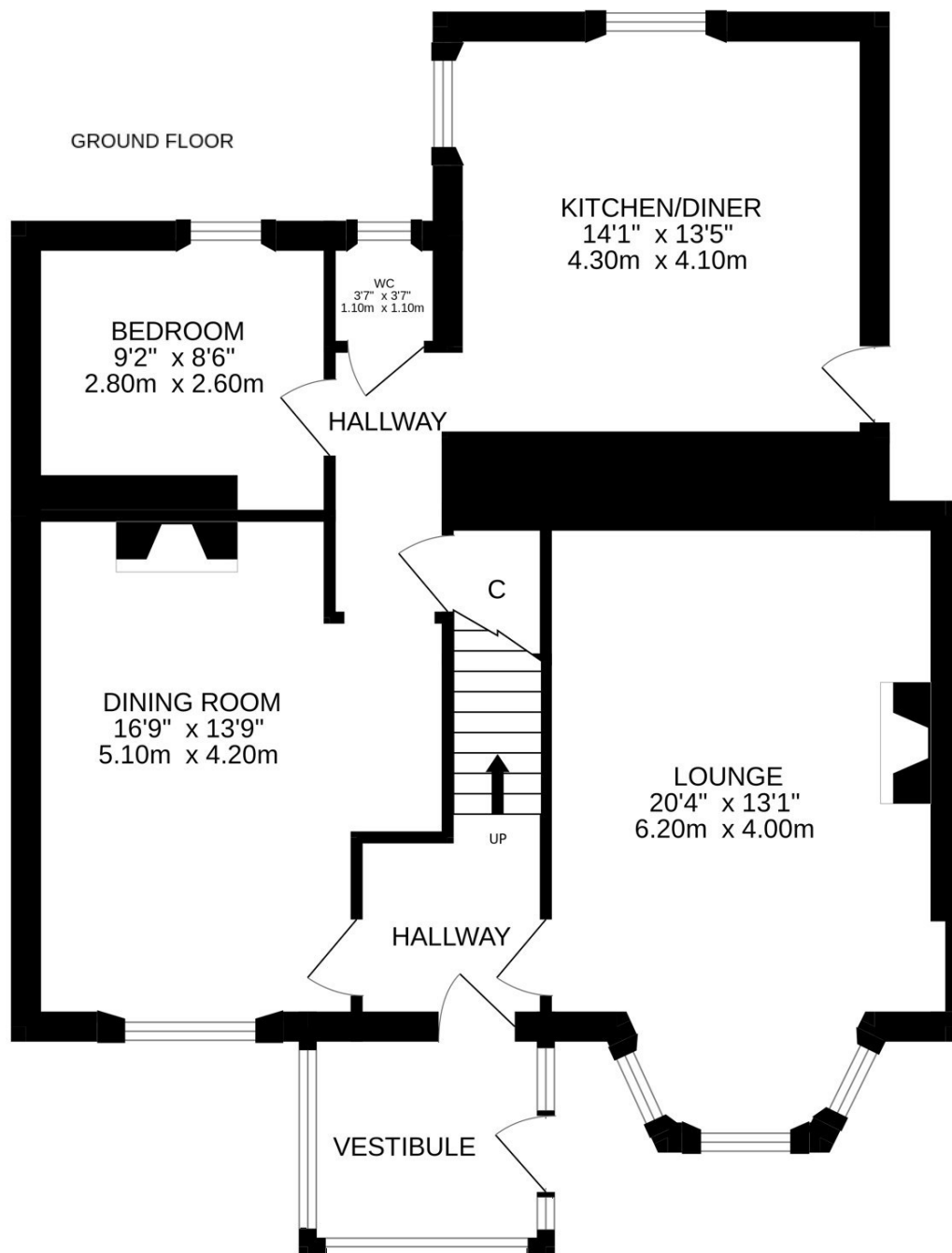












Energy Performance D Rating Council Tax Band E

Services Mains water, electric, gas and drainage. Double glazed throughout.

Viewing Strictly by appointment through Irving Geddes.

Video Tour <https://my.matterport.com/show/?m=qHapdz7sPDi>



Crieff
25 West High Street, PH7 4AU
Tel: 01764 653771

Comrie
1 Drummond Street, PH6 2DW
Tel: 01764 670325

Aberfeldy
6 The Square, PH15 2DD
Tel: 01887 822722