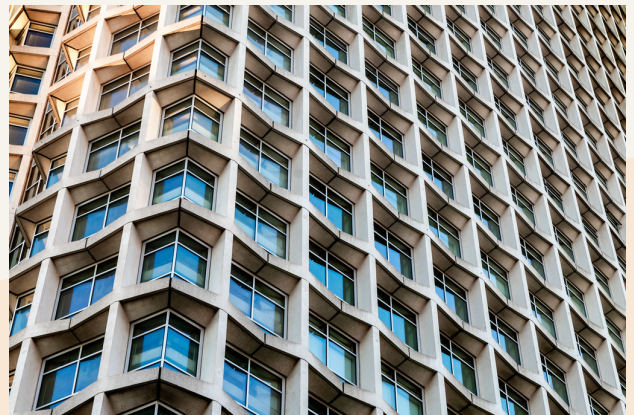




People Make Places



Centre Point Residences, New Oxford Street, WC1

2 bedrooms | 1,345 sq ft

£1,700 pw





A luxurious two bedroom, two bathroom apartment to rent in the iconic Centre Point Residences. The apartment boasts a large open plan living room, two large bedrooms and beautiful modern bathrooms. The apartment has access to incredible facilities including a state of the art gym, swimming pool, members lounge. and cinema.

What you need to know

- Two bedrooms
- Two bathrooms (both en-suite)
- Guest cloakroom
- 24 hour concierge
- Pool, gym, cinema room
- Furnished
- Air conditioned
- Eighth floor with lift
- Available immediately
- Next to Tottenham Court Road tube





Overview

Set serenely above the West End, this beautifully presented two bedroom, two bathroom apartment is on the eighth floor of the iconic Centre Point Residences.

The apartment boasts a large open plan living room complete with a modern kitchen, two large bedrooms with fitted wardrobes and beautifully appointed modern bathrooms, plus a further guest cloakroom.

The apartment has access to incredible facilities including a 24 hour concierge service, a state of the art gym, swimming pool, members lounge. and cinema. The property is available immediately on a furnished basis for a 12 month let.

Centre Point is perfectly located and is an easy walk to both Oxford Street and Covent Garden and the many shops, bars, restaurants and theatres the areas have to offer. There are fantastic transport links including Tottenham Court Road and Oxford Circus only a short walk away.

Westminster City Council tax band F.



Centre Point Residences, New Oxford Street, WC1



People Make Places

London is collection of inspiring urban villages and one of the most exciting places in the world to live, work & play.

We work with both property owners and their occupiers, sharing the story of these vibrant neighbourhoods, conveying the unique soul & energy to future custodians, the people who'll keep them buzzing.

And unlike many real estate businesses we're not just about buildings, because streets & buildings don't make a neighbourhood.

We're about building relationships, because **people make places**.

MISINTERPRITATION ACT [COPYRIGHT] DISCLAIMER: Tavistock Bow Ltd for themselves and for the vendor(s) of this property whose agents thy are, given notice that: 1. These particulars do not constitute, nor constitute any part of, an offer or contract. 2. None of the statements contained in these particulars as to the property are to be relied on as statements or representations of fact. 3. Any intending purchaser or lessee must satisfy themselves by inspection or otherwise as to the correctness of each of the statements contained in these particulars. 4. The vendor(s) or lessor(s) do not make or give and neither Tavistock Bow Ltd nor any person in their employment has any authority to make or give any representation or warranty whatever in relation to this property. Finance Act 1989, Unless otherwise stated all prices and rents are quote exclusive of VAT. Property Misrepresentation Act 1991; These details are believed to be correct at the time of compilation but may be subject to subsequent amendment.

Follow us:     @tavistockbow

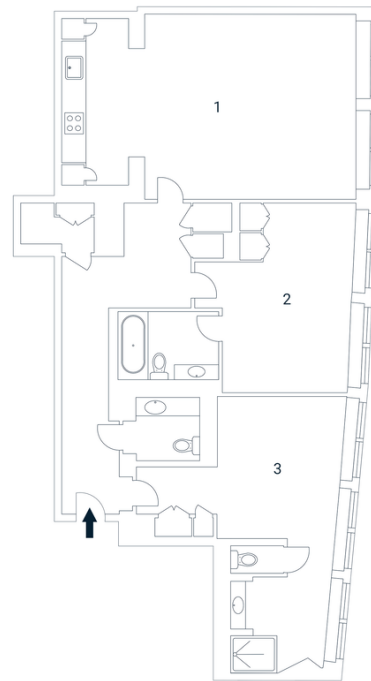
Score	Energy rating	Current	Potential
92+	A		
81-91	B	85 B	85 B
69-80	C		
55-68	D		
39-54	E		
21-38	F		
1-20	G		

Centre Point, WCI

Approximate Gross Internal Area 125 sq m / 1345 sq ft

Eighth Floor

1 Living /	2 Bedroom	3 Bedroom
Kitchen /	4.35 x 5.13M	5.41 x 3.80M
Dining	13'5" x 16'8"	17'7" x 12'4"
8.06 x 4.97M		
26'4" x 16'3"		



Floorplan produced for Tavistock Bow. Illustration for identification purposes only and not to scale. All measurements are approximate and not to be relied upon.

tavistockbow

21 New Row, Covent Garden,
London, WC2N 4LE

t: 020 7477 2177
e: hello@tavistockbow.com
w: tavistockbow.com



Centre Point Residences, New Oxford Street, WCI