



# 1 Meadow Place, Harrogate

Harrogate

Guide Price **£475,000**



# MYRINGS

Harrogate's Family Estate Agent





## 1 Meadow Place

Harrogate, Harrogate

Located in a desirable position overlooking the open green is this spacious detached home built in 2020 by a highly-reputable builder. The property boasts four double bedrooms, a detached garage and offers convenient access to a various amenities and transport links. Council Tax band: E

Tenure: Freehold

- SPACIOUS FOUR BEDROOM DETACHED HOME BUILT IN 2020
- DESIRABLE POSITION OVERLOOKING THE GREEN
- LARGEST HOUSE MODEL ON THE DEVELOPMENT
- WALKING DISTANCE OF AMENITIES AND TRANSPORT LINKS, AS WELL AS OPEN COUNTRYSIDE



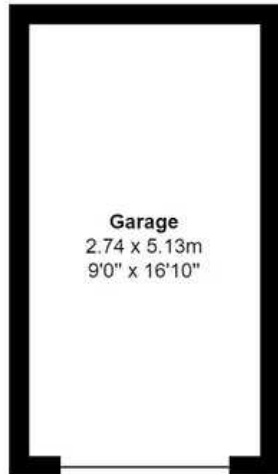
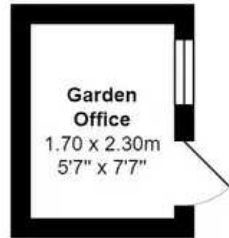
MYRINGS



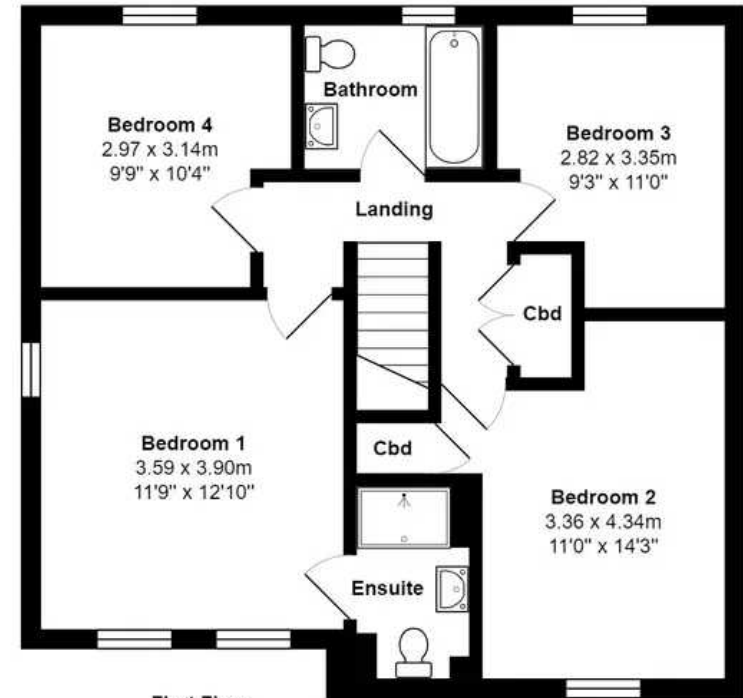


Total Area: 121.5 m<sup>2</sup> ... 1308 ft<sup>2</sup> (excluding garage, garden office)

All measurements are approximate and for display purposes only.



**Ground Floor**  
Area: 60.7 m<sup>2</sup> ... 654 ft<sup>2</sup>



**First Floor**  
Area: 60.7 m<sup>2</sup> ... 654 ft<sup>2</sup>









## Myrings Estate Agents

Myrings Estate Agents Ltd, 10 Princes Square - HG1 1LX

01423  
566400

• [enquiries@myringsestateagents.com](mailto:enquiries@myringsestateagents.com) • <http://myringsestateagents.com/>

