



17 Epping Close, Romford

£1,950 pcm

Garage • Rear Garden with Decking and Lawn • Recently Refurbished • Unfurnished • Three Good Size Bedrooms • Spacious Lounge and Dining area • Kitchen with appliances, including New Oven • First Floor Bathroom • Council Tax Band D • Deposit £2250.00 • EPC Rating - E • Initial Tenancy Term - 12 Months



This three-bedroom semi-detached house is located in a sought-after location due to its convenience for several schools / parks making it an ideal home for families.

Upon entering the property, you are greeted by a hallway which has access to the spacious lounge and dining area. The well-appointed kitchen, equipped with a range of appliances including a brand new oven. All of the ground floor has recently undergone refurbishment, including new carpets and freshly painted walls.

On the first floor you'll find three generously sized bedrooms, all rooms have recently been decorated to a neutral palette. The property also benefits from a modern bathroom.

To the rear of the property, you will find a well-maintained garden featuring both decking and lawn. The property further benefits from a garage, providing secure parking and additional storage options. There is also ample off-street parking available for residents and visitors.

This property falls under Council Tax Band D. With a deposit of £2250.00, this unfurnished property offers the flexibility to personalise and transform it into your ideal home.

Tenancy Deposit - £2,250.00

Initial Tenancy Term - 12 Months

Council Tax Band - D

EPC Rating - E



Lounge

13' 5" x 11' 9" (4.09m x 3.58m)

Dining Area

10' 3" x 8' 11" (3.13m x 2.71m)

Kitchen

10' 0" x 8' 3" (3.05m x 2.52m)

Bedroom One

13' 6" x 10' 8" (4.11m x 3.24m)

Bedroom Two

10' 0" x 8' 1" (3.05m x 2.46m)

Bedroom Three

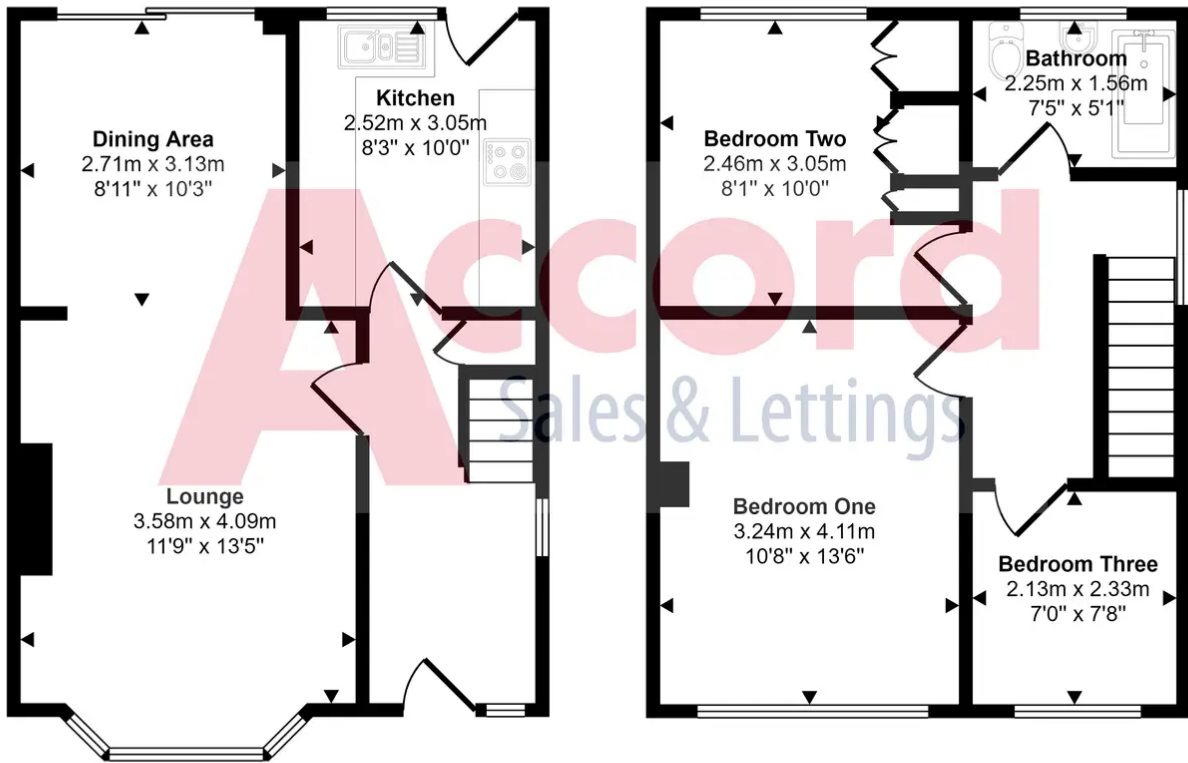
7' 8" x 7' 0" (2.33m x 2.13m)

Bathroom

5' 1" x 7' 5" (1.56m x 2.25m)



Approx Gross Internal Area
82 sq m / 878 sq ft



Ground Floor
Approx 41 sq m / 440 sq ft

First Floor
Approx 41 sq m / 438 sq ft

This floorplan is only for illustrative purposes and is not to scale. Measurements of rooms, doors, windows, and any items are approximate and no responsibility is taken for any error, omission or mis-statement. Icons of items such as bathroom suites are representations only and may not look like the real items. Made with Made Snappy 360.

You can include any text here. The text can be modified upon generating your brochure.