



Ridgewater

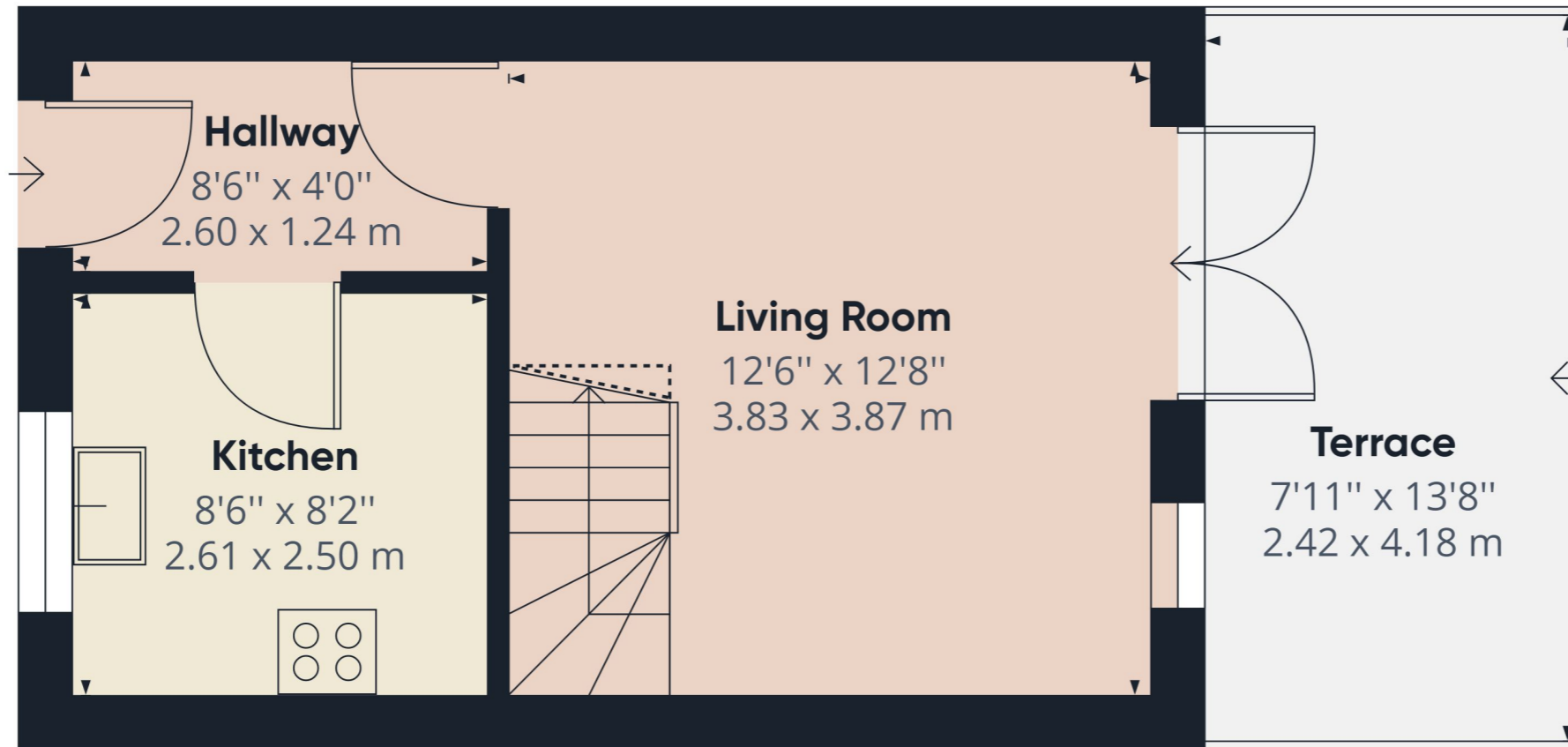
Local • Independent • Experts

2 Bedroom Terraced House for Sale in Glebeland Way

Torquay

£209,950

FLOOR PLAN



Approximate total area⁽¹⁾

275.27 ft²
25.57 m²

Reduced headroom

11.14 ft²
1.04 m²

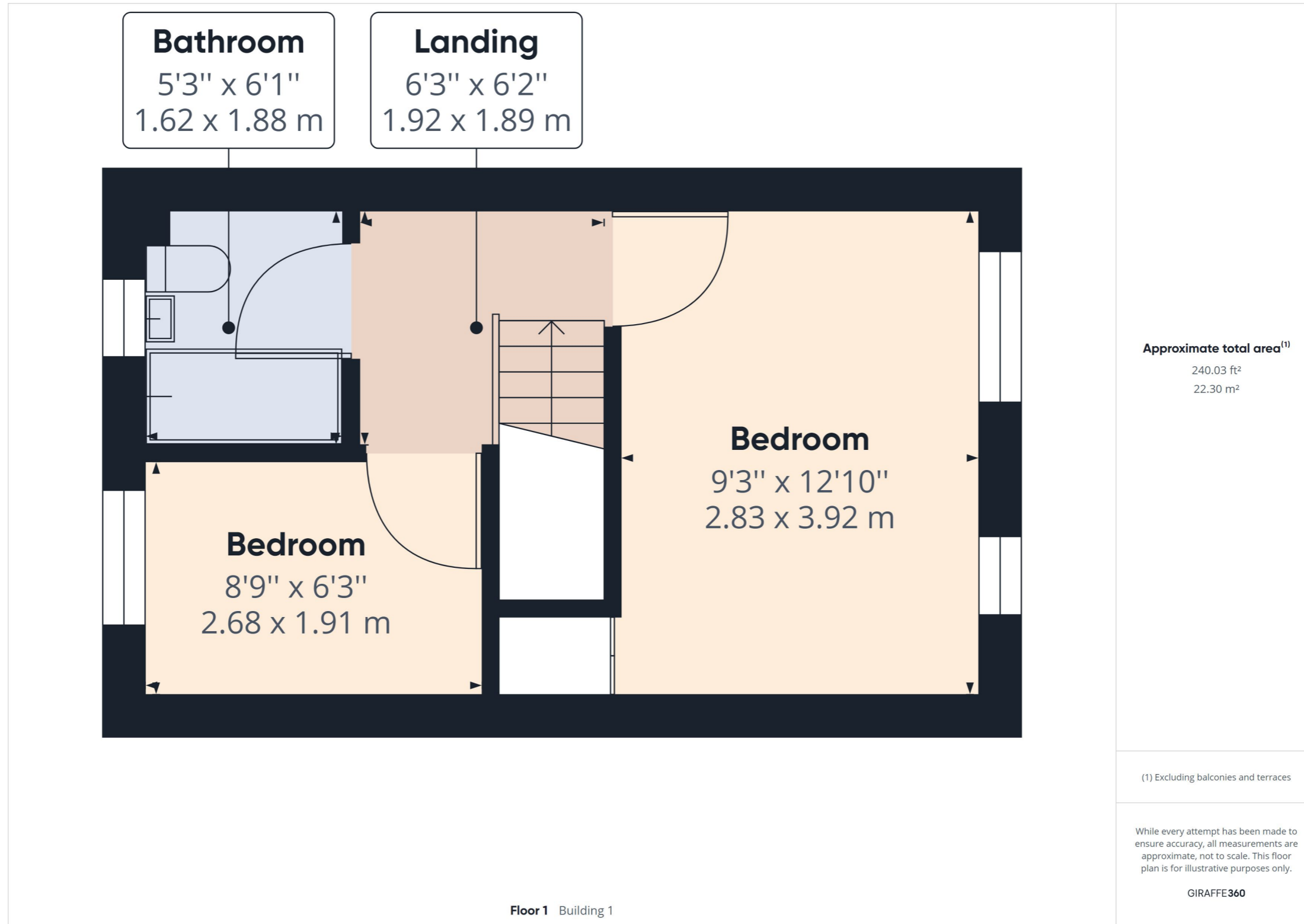
(1) Excluding balconies and terraces

Reduced headroom
(below 1.5m/4.92ft)

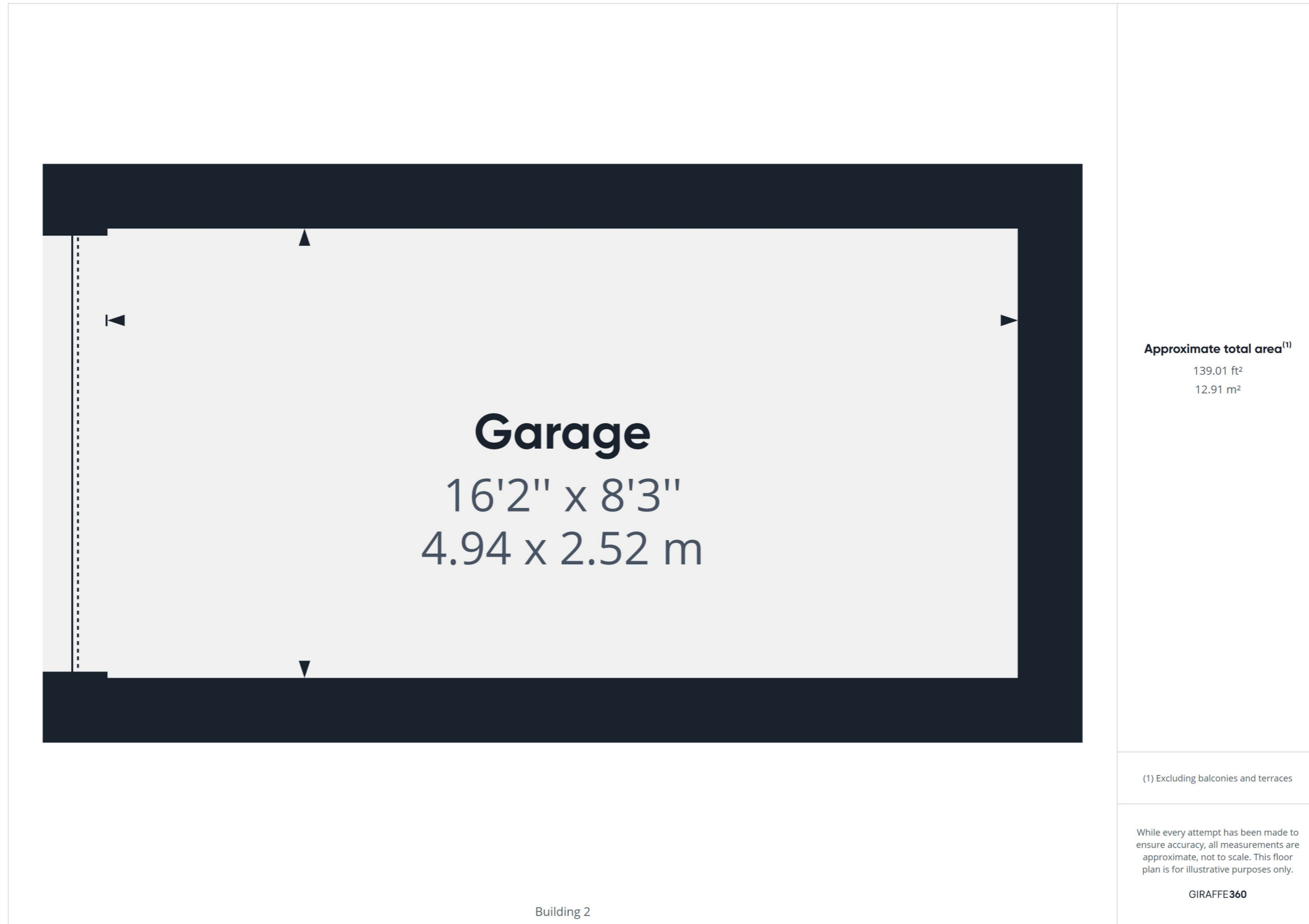
While every attempt has been made to ensure accuracy, all measurements are approximate, not to scale. This floor plan is for illustrative purposes only.

GIRAFFE360

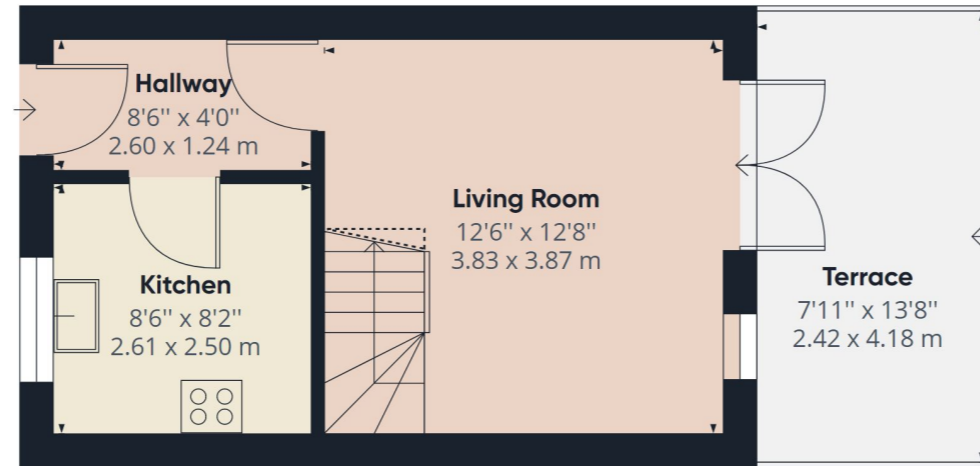
FLOOR PLAN



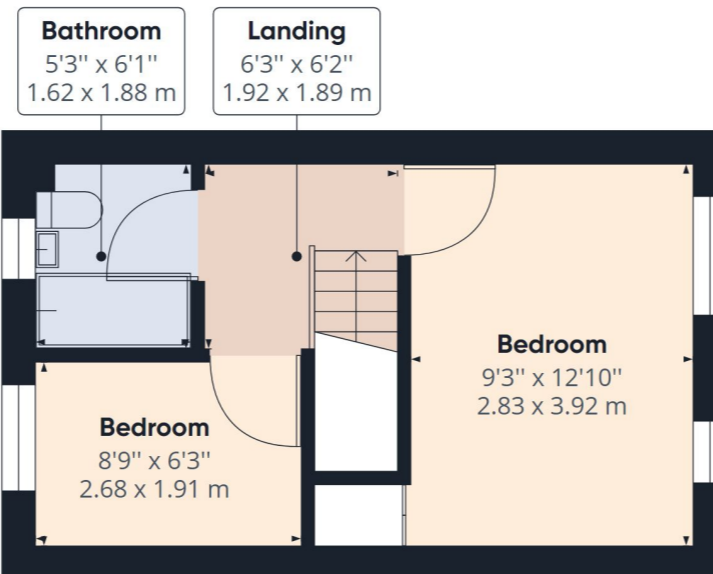
FLOOR PLAN



FLOOR PLAN



Ground Floor Building 1



Floor 1 Building 1

Approximate total area⁽¹⁾

515.30 ft²

47.87 m²

Reduced headroom

11.14 ft²

1.04 m²

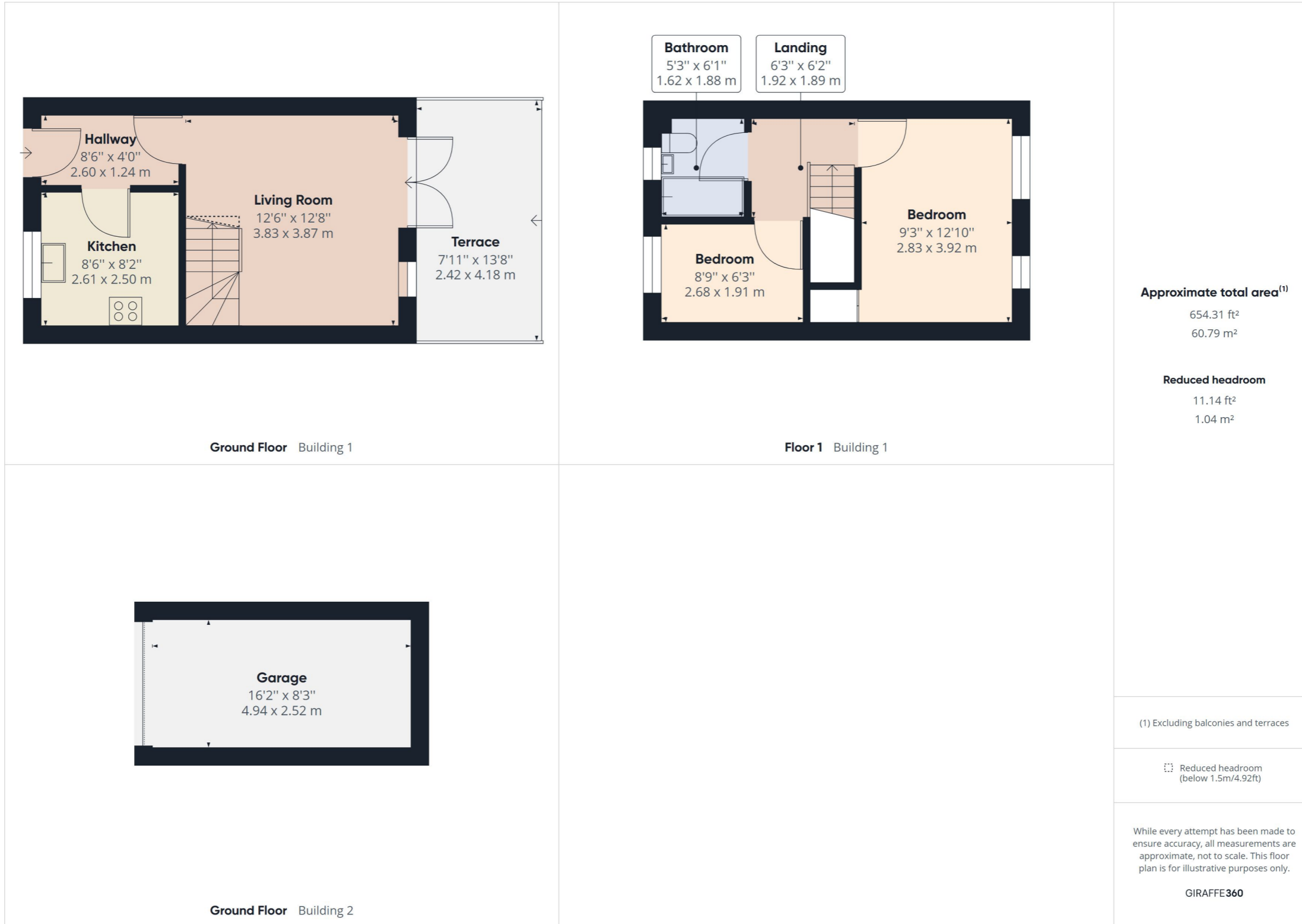
(1) Excluding balconies and terraces

Reduced headroom
(below 1.5m/4.92ft)

While every attempt has been made to ensure accuracy, all measurements are approximate, not to scale. This floor plan is for illustrative purposes only.

GIRAFFE360

FLOOR PLAN



DESCRIPTION

Ridgewater is pleased to offer this well presented two bedroom terrace house in a quiet popular cul-de-sac in Shiphay, the property boast 2 bedrooms, garden and garage and would make a perfect 1st home or investment opportunity.

The accommodation comprises of a hallway, kitchen, lounge/diner, landing, two bedrooms and a bathroom. Outside the home comes with front and rear gardens and a garage.

No onward chain.

Entrance Hall

Double glazed door to the front aspect, carpet flooring, radiator, telephone point, fuse box and doors to kitchen and living room.

Kitchen 8'6" x 8'2" (2.61m x 2.50m)

Matching wall and level base work units with roll top work surfaces, sink/drainage unit, built in electric oven and hob, appliance space for washing machine and fridge. The room has part tiled walls and a double glazed window to the front aspect.

Lounge/Diner 12'8" x 12'6" (3.87m x 3.83m)

Double glazed window to the rear aspect and sliding doors to the rear into the garden, carpet flooring, radiator, tv point and stairs to the first floor.

Landing

Loft access, stairs from the living room, carpet flooring and doors to all rooms.

Bedroom 1 12'10" x 9'3" (3.92m x 2.83M)

Double glazed windows to the rear aspect, carpet flooring, radiator and a built in over stairs cupboard.

Bedroom 2 8'9" x 6'3" (2.68m x 1.91m)

Double glazed window to the front aspect, carpet flooring and a radiator.

Bathroom

Fully tiled with a three piece suite comprising of a bath with mixer tap and electric shower, wc, wash hand basin, chrome heated towel rail and a double glazed window to the front aspect.

Front Garden

A lawned area with a path to the front door

Rear Garden

Enclosed by fencing with lawn and patio area.

Garage in block with Up and over door

Council Tax Band: B

EPC C

Tenure: Freehold

Consumer Protection from Unfair Trading Regulations 2008 The agent has not tested any apparatus, equipment, fixtures and fittings or services and so cannot verify that they are in working order or fit for the purpose. A Buyer is advised to obtain verification from their Solicitor or Surveyor. References to the Tenure of a Property are based on information supplied by the Seller. The Agent has not had sight of the title documents. A Buyer is advised to obtain verification from their Solicitor. Items shown in photographs are not included unless specifically mentioned within the sales particulars. They may however be available by separate negotiation. Buyers must check the availability of any property and make an appointment to view before embarking on any journey to see a property. Please inform us of any particular requirements that are important to you prior to viewing.

PHOTOS





Paignton Office

Ridgewater Sales & Lettings

1 Manor Corner Preston TQ3 2JB

Tel: 01803 525 100

Web: www.ridgewater.co.uk

Email: enquiries@ridgewater.co.uk



Torquay Office

Ridgewater Sales & Lettings

79 Babbacombe Rd Torquay TQ1 3SR

Call: 01803 525 100

Web: www.ridgewater.co.uk

Email: enquiries@ridgewater.co.uk

Consumer Protection from Unfair Trading Regulations 2008 The agent has not tested any apparatus, equipment, fixtures and fittings or services and so cannot verify that they are in working order or fit for the purpose. A Buyer is advised to obtain verification from their Solicitor or Surveyor. References to the Tenure of a Property are based on information supplied by the Seller. The Agent has not had sight of the title documents. A Buyer is advised to obtain verification from their Solicitor. Items shown in photographs are not included unless specifically mentioned within the sales particulars. They may however be available by separate negotiation. Buyers must check the availability of any property and make an appointment to view before embarking on any journey to see a property. Please inform us of any particular requirements that are important to you prior to viewing.