



5 Summerley Point, Summerley Lane

First floor two bedroom apartment situated within a short walking distance to the beach in Felpham.



- ▶ **Immediate 'exchange of contracts' available Sold via 'Secure Sale'**
- ▶ **Dual Aspect Sitting Room With Juliet Balcony**
- ▶ **Principal Bedroom With En-Suite and Second Double Bedroom**
- ▶ **Lift and Stairs to all Floors**
- ▶ **First Floor Apartment**
- ▶ **Well Appointed Kitchen**
- ▶ **Family Bathroom**
- ▶ **Two Allocated Under Cover Parking Spaces**
- ▶ **No Forward Chain**

Summerley Point is a striking development from Greydune Limited offering a collection of just 16 individually styled apartments. Every aspect has been carefully considered, from the stylish elegant architecture, to the luxurious level of internal finish, with lift and stairs to all floors and allocated secure parking.

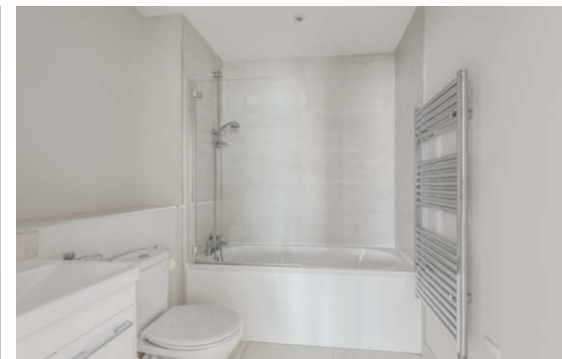
The dual aspect sitting room has double doors opening onto the Juliet balcony with doors opening into the kitchen, which is fitted with a superb high quality German kitchen with Cimstone quartz worktops and integrated appliances for a sleek and stylish finish. There are two double bedrooms both with fitted wardrobes. The family bathroom and en-suite feature chic contemporary white sanitary ware, which is complemented by chrome fittings and neutral tiling.

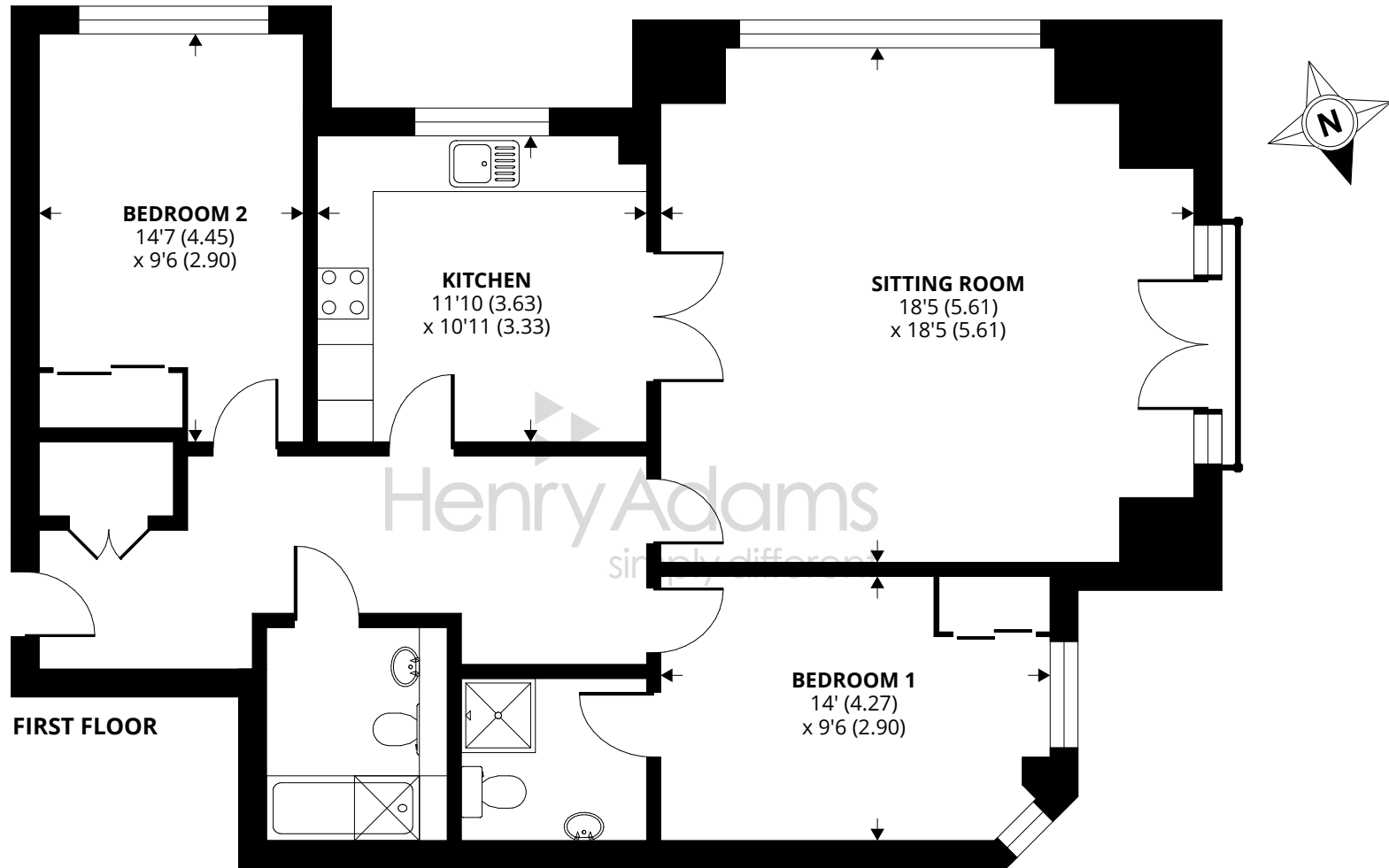
There are two allocated under cover parking spaces provided in the electric gated private parking area.

Tenure: To be confirmed.

Maintenance Charge: We understand the maintenance charge is currently £1,360.44 every six months.

NB: Henry Adams are working in conjunction with Pattinson Auction and the method of sale is Modern Method of Auction. For more information please contact our office on 01243 842123.





Approximate Area = 1042 sq ft / 96.8 sq m
For identification only - Not to scale



Agents Note - Our particulars are for guidance only and are intended to give a fair overall summary of the property. They do not form part of any contract or offer, and should not be relied upon as a statement or representation of fact. Measurements, areas and distances are approximate only. Photographs may include lifestyle shots and pictures of local views. No undertaking is given as to the structural condition of the property, or any necessary consents or the operating ability or efficiency of any service, system or appliance. Please ask if you would like further information, especially before you travel to the property.

Location

The apartments are situated on the periphery of Summerley Private Estate and within a convenient distance of the beach and village centre. The village offers a wide range of facilities including shops, public houses and a sailing club. Historic Arundel, the cathedral city of Chichester and the famous Goodwood motor circuit and racecourse can all be found within approximately 10 mile radius.

Directions

From our office in Middleton-on-Sea head towards Felpham on the B2259. After passing the petrol station on your right, turn almost immediately left into Summerley Lane. Proceed to the far end of Summerley Lane and as the road bends round to the right, Summerley Point will be found on the right hand side, next to the post office and convenience store.

Council Tax Band: D

27/11/23

