



**Hayward  
Tod**

**4 Bedroom Detached House** | Hillcroft | Thurstonfield | Carlisle | CA5 6HW  
**Offers in excess of £375,000**







Quality modern home on a small scale development. Well balanced accommodation with four good size bedrooms. Large wood burning stove in living room. Attached garage.

Spacious entrance hallway | W.C. | living room | dining kitchen | utility | main bedroom with en-suite shower | three further double bedrooms | four piece bathroom | large landing | attached single garage | EV charger | paved driveway | lawned rear garden | double glazing | freehold | mains drainage | EPC C | council tax band E

#### APPROXIMATE MILEGAES

Carlisle 6 | Wigton 8 | M6 motorway 7 | Penrith - North Lake District 28 | Newcastle International Airport 63

#### WHY THURSTONFIELD?

Situated just a short distance to the west of Carlisle and a stones throw from the beautiful Solway Coast, the village has a wonderful rural feel yet remains very accessible. A good primary school is just a short distance from the property and the wider region is within easy reach thanks to the city by-pass which is just a few minutes drive to the east allowing for quick access to the M6 motorway and the A595/6.

#### ACCOMODATION

Built by highly regarded local developers Maris Homes the property is specified higher than that of an average new build home. An impressive wood and glazed double height entrance hall welcomes you in to the property and double doors lead from the hall to the living room with a freestanding feature stove. To the rear of the property is an open plan kitchen dining space with an island. Additionally there is a utility room, store cupboard and W.C. On the first floor are four equally sized bedrooms, including one with an en-suite shower, all set around a spacious landing. The family bathroom has both a bath and separate shower. Externally the property benefits from a spacious corner plot

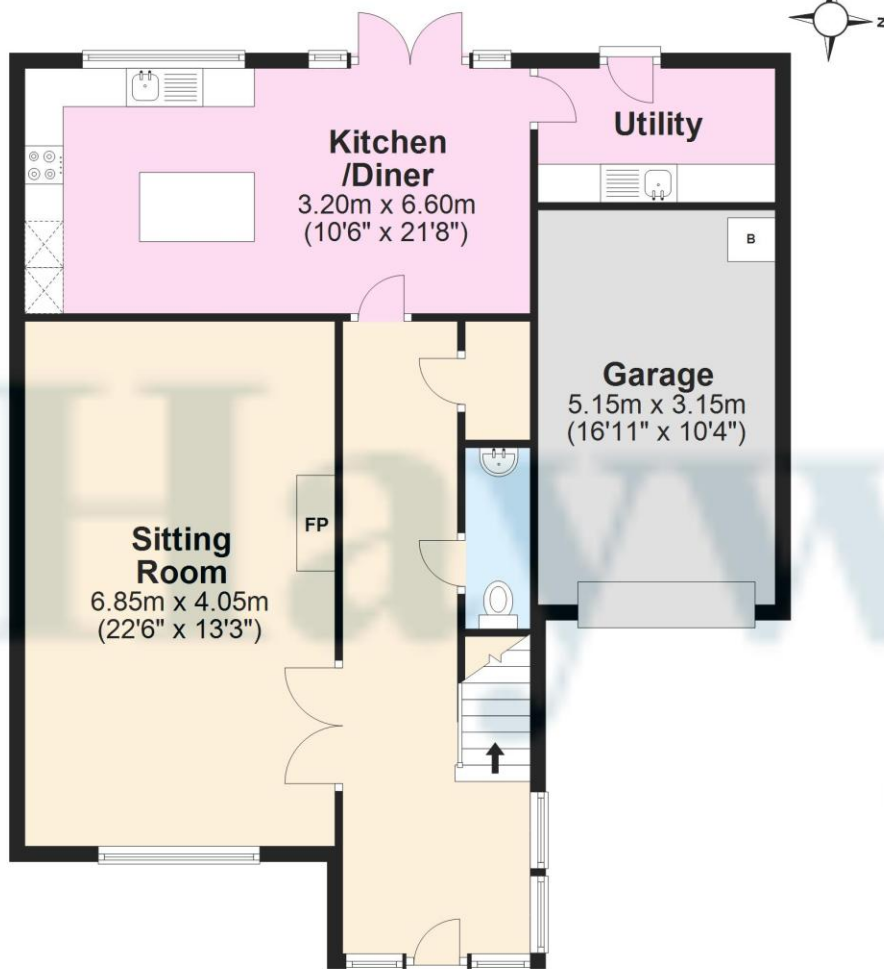


and has an ample paved driveway in front of the attached single garage.



## Ground Floor

Approx. 93.1 sq. metres (1001.9 sq. feet)



## First Floor

Approx. 93.9 sq. metres (1011.0 sq. feet)



Total area: approx. 187.0 sq. metres (2012.9 sq. feet)

### Contact

6 Paternoster Row,  
Carlisle Cumbria CA3 8TT

01228 810 300  
info@haywardtod.co.uk  
haywardtod.co.uk

### Agents note

Whilst every care has been taken to prepare these sales particulars, they are for guidance purposes only. All measurements are

approximate and are for general guidance purposes only and whilst every care has been taken to ensure their accuracy, they should not be relied upon and potential buyers are advised to recheck the measurements.