



Pott Street, Swinton, M27 6FR
Mid Terraced Victorian

**independent
london.** 
Right place. Right people.

Traditional Victorian Terraced House

Swinton M27 6FR

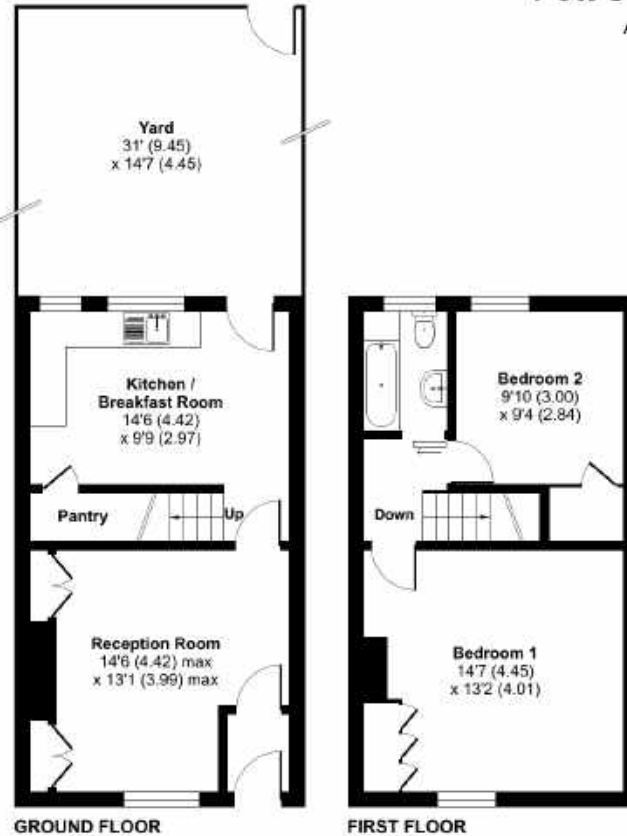
A spacious two-bedroom Victorian Terraced house in a location suitable for schools and access to city centre. The property has gas central heating and has decent room sizes throughout. The property would make an ideal first time buy or rental investment. Manchester City Centre is easily accessible from this location

At a rent of £900 pcm property shows a 7.2% yield

Floor Plan included

Square feet:	778 approx
Bedrooms:	2
Bathrooms:	1
Tenure:	900+ year lease
Property Style:	Terraced
Location:	Swinton
Council Tax Band:	A
EPC Rating:	D
Parking:	Street
Garden:	Rear Yard
Nearest Transport:	Close to Buses 8, 21, 22, 909, 940





Pott Street, Manchester, M27

Approximate Area = 778 sq ft / 72.3 sq m
For identification only - Not to scale

Square feet: 778 approx
Bedrooms: 2
Bathrooms: 1
Tenure: Long Lease
Property Style: Terraced
Location: Swinton
Council Tax Band: A
EPC Rating: D
Parking: Street
Garden: Rear Yard
Nearest Transport:
Close to Buses
8, 21, 22, 909, 940



All rooms have been measured with electronic laser and are approximate measurements only. None of the services to the above property have been tested by ourselves, and we cannot guarantee that the installations described in the details are in perfect working order. Independent London Lettings for themselves, and for the vendors or lessors, produce these brochures in good faith, and are a guideline only. They do not constitute any part of a contract and are correct to the best of our knowledge at the time of going to press.

Independent London
6-8 Cole Street, Trinity Village,
London SE1 4YH
t: 020 7099 6373
e: hello@independentlondon.net

independentlondon.co.uk
Landlords ask for The 5% Let Only
Service from Independent London

