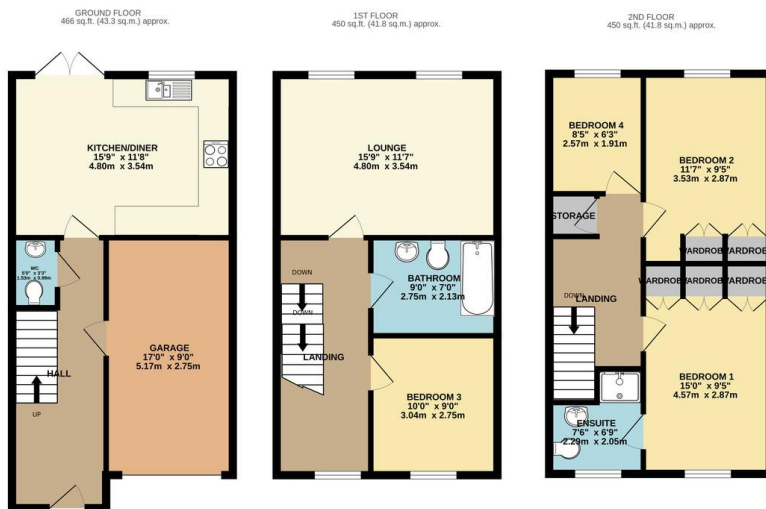


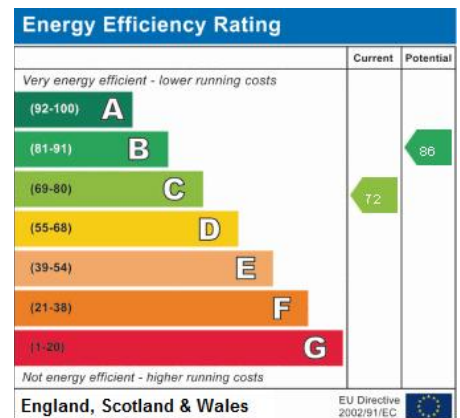
FOR SALE

4 Bed Semi-Detached House in Erringtons Close, Great Glen LE2 4RP
£325,000

This immaculate modern four bedroom three storey semi detached home can be found on a quiet cul de sac, offering field views and stylish living all set within the desirable location of Great Glen. The accommodation consists of entrance hall, kitchen diner, ground floor W.C, access to integral garage, landing to lounge, bedroom, family bathroom, further landing to three bedrooms, master bedroom with en-suite shower, landscaped gardens and ample car standing space. Call Phillips George to view.



TOTAL FLOOR AREA: 1366 sq.ft. (126.9 sq.m.) approx.
 Whilst every attempt has been made to ensure the accuracy of the floorplan contained here, measurements of doors, windows, rooms and any other items are approximate and no responsibility is taken for any error, omission or mis-statement. This plan is for illustrative purposes only and should be used as such by any prospective purchaser. The services, systems and appliances shown have not been tested and no guarantee as to their operability or efficiency can be given.
 Made with Metropix ©2023



- Three Storey
- Cul-De-Sac
- Highly Sought After Location
- Four Bedrooms
- Master En-Suite
- Modern Property
- Landscaped Gardens
- Garage

Agents Note: Whilst every care has been taken to prepare these sales particulars, they are for guidance purposes only. All measurements are approximate and for general guidance purposes only and whilst every care has been taken to ensure their accuracy, they should not be relied upon and potential buyers are advised to recheck the measurements.

