



1 Wigton Gardens, Stanmore
Stanmore

Offers in Region of **£600,000**

Lr LAWRENCE RAND

1 Wigton Gardens

Stanmore, Stanmore

'Two properties for the price of one.' Extended three-bedroom end of terrace, excellent condition throughout, ample living space. Ground floor: spacious living room, fully fitted kitchen. Large studio/annexe. Spacious garden with lawn and decking. Large outbuilding with power. Parking for 2 cars.

Council Tax band: D

Tenure: Freehold

EPC Energy Efficiency Rating: D

EPC Environmental Impact Rating: E

- Extended end terrace house
- Large studio/ granny flat
- Excellent condition
- Three bedrooms
- Two bathrooms
- Spacious garden to rear
- Large outbuilding with power
- Parking for two cars
- Close To Canons Park And Queensbury Tubes
- Close To excellent local schools and amenities





Lr LAWRENCE RAND



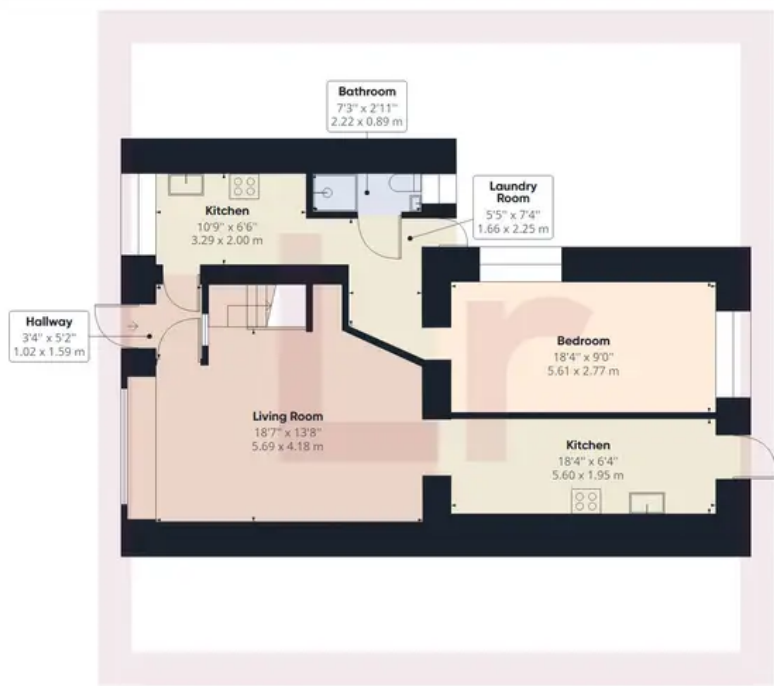
Lr LAWRENCE RAND



Lr LAWRENCE RAND



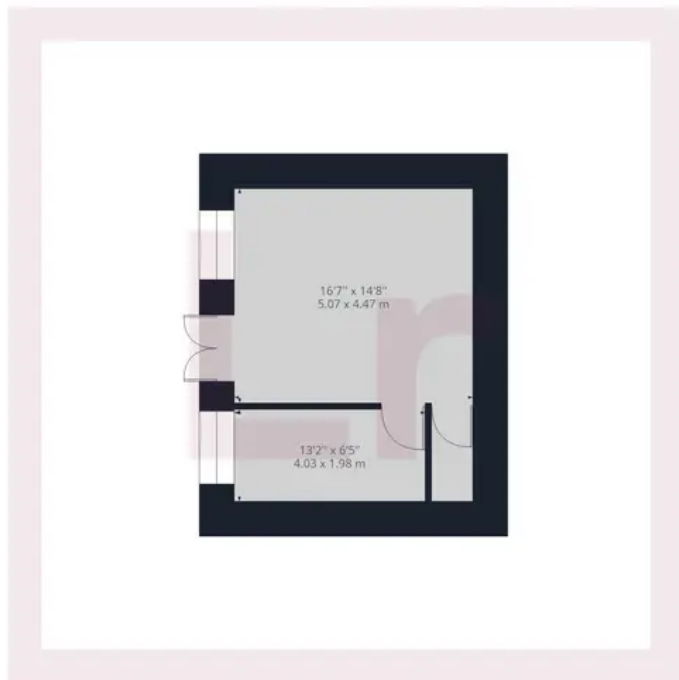
Lr LAWRENCE RAND



Ground Floor Building 1



Floor 1 Building 1



Ground Floor Building 2

Approximate total area⁽¹⁾

1407.77 ft²

130.79 m²

(1) Excluding balconies and terraces

While every attempt has been made to ensure accuracy, all measurements are approximate, not to scale. This floor plan is for illustrative purposes only.



Lawrence Rand

Lawrence Rand, 106 Victoria Road - HA4 0AL

01895 632211

Info@lawrence-rand.co.uk

www.lawrence-rand.co.uk/



LAWRENCE RAND