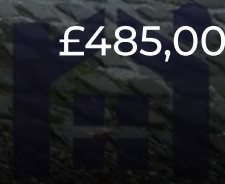




South Road, Bretherton

[PR26 9AJ](#)

£485,000





Moss Farm Mews

Bretherton

Fabulous mid terrace cottage with four double bedrooms, private garden with studio and immaculately presented, in the heart of the village of Bretherton with access to countryside walks and in the catchment area for excellent schools. Available with no upward chain.

To the front the cobbled and flagged driveway leads to the garage, with electrically operated door, and to the main entrance. Step into the welcoming hallway with cloakroom off, and luxury vinyl flooring which runs through much of the ground floor.

The snug makes a perfect home cinema room and has patio doors opening to a delightful southwest facing courtyard. The living room has wood burning stove and opens to the heart of the house with dining area and kitchen comprising a range of wall and base units topped by quartz work surfaces and etched drainer. Integrated appliances include five ring electric hob, electric oven and grill, multi oven, dishwasher and space and power for an American style refrigerator and freezer. Leading off is the garage with space, power and plumbing for additional appliances, and a door to the wood store.

Completing the ground floor is the aptly named garden room with patio doors for ease of access and plenty of natural light.



Externally the beautiful rear garden has a number of terraces linked by a meandering pathway which flows past the arbour which is covered in wisteria, clematis and honeysuckle which fill the garden with scent, down to the studio which could easily be a first class home office.

With just under 2,000 square feet of stylish and elegant accommodation this is a wonderful place to call home. Do give us a call to arrange a viewing and make it yours. Council tax D, EPC D, Freehold.



Eccleston Branch
265 The Green, Eccleston, PR7 5TF
01257 451673

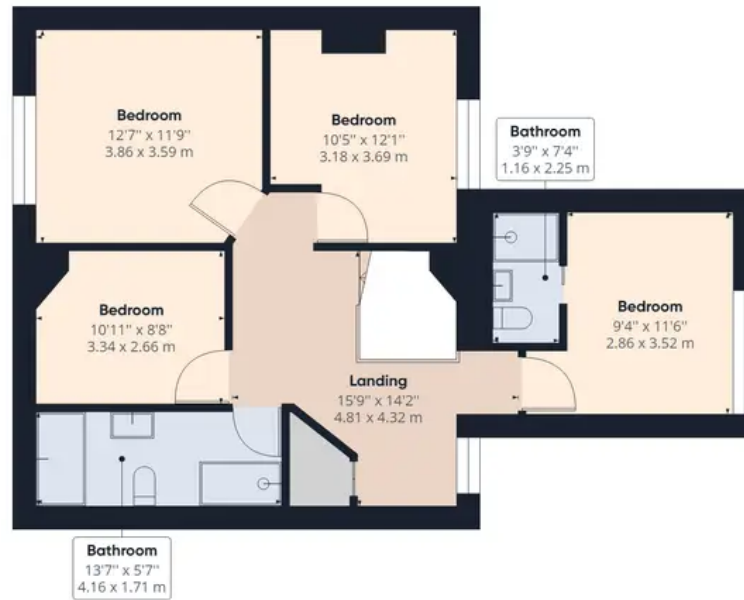
Coppull Branch
244 Spendmore Lane, Coppull, PR7 5DE
01257 794588

www.hometruthslancs.co.uk
office@hometruthslancs.co.uk

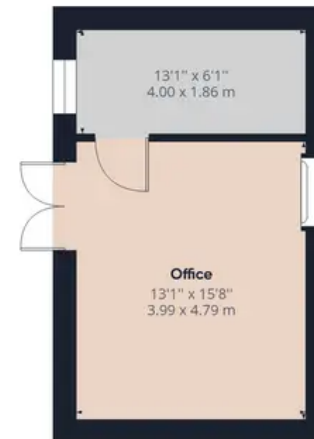




Floor 1 Building 1



Floor 2 Building 1



Floor 1 Building 2

Approximate total area⁽¹⁾

1994.57 ft²

185.30 m²

Reduced headroom

9.60 ft²

0.89 m²

(1) Excluding balconies and terraces

Reduced headroom
(below 1.5m/4.92ft)

While every attempt has been made to ensure accuracy, all measurements are approximate, not to scale. This floor plan is for illustrative purposes only.

GIRAFFE 360