



18 Pinley Fields, Coventry
Coventry

 **RDR DASSAUR**

£175,000



18 Pinley Fields

Coventry, Coventry

Presenting a well located three-bedroom residence now available for purchase. The ground floor comprises an entrance hall, a tastefully designed living room, a well-appointed kitchen/diner, and an inviting garden with a convenient storage facility.

Council Tax band: A

Tenure: Freehold

- Catchment area for Primary and secondary schools
- Ideal first time purchase
- Gated front garden
- 3 bedroom
- Coventry train station 1.5 miles away
- Medical centres few minutes walk away



Front Aspect:

This attractive home welcomes with a gated garden, showcasing a lush lawn and access to the entrance hall.

Entrance Hall:

Upon entry, a well-defined space with a door leading to the hallway and an elegantly ascending staircase to the first floor.

Living Room:

The living room boasts laminate flooring, providing a comfortable and stylish space. Equipped with a central heated radiator, it features access to the kitchen/dining room and benefits from ample natural light through the double-glazed window.

Kitchen:

A ceramic-tiled area housing a coordinated array of wall and base-mounted units with contrasting work surfaces. Complete with essential appliances such as hob/oven, extractor, and an inset sink with drainer. The kitchen also includes a double-glazed window, providing a pleasant view, and a door leading to the garden. A central heated radiator ensures a cozy atmosphere.

Rear Aspect:

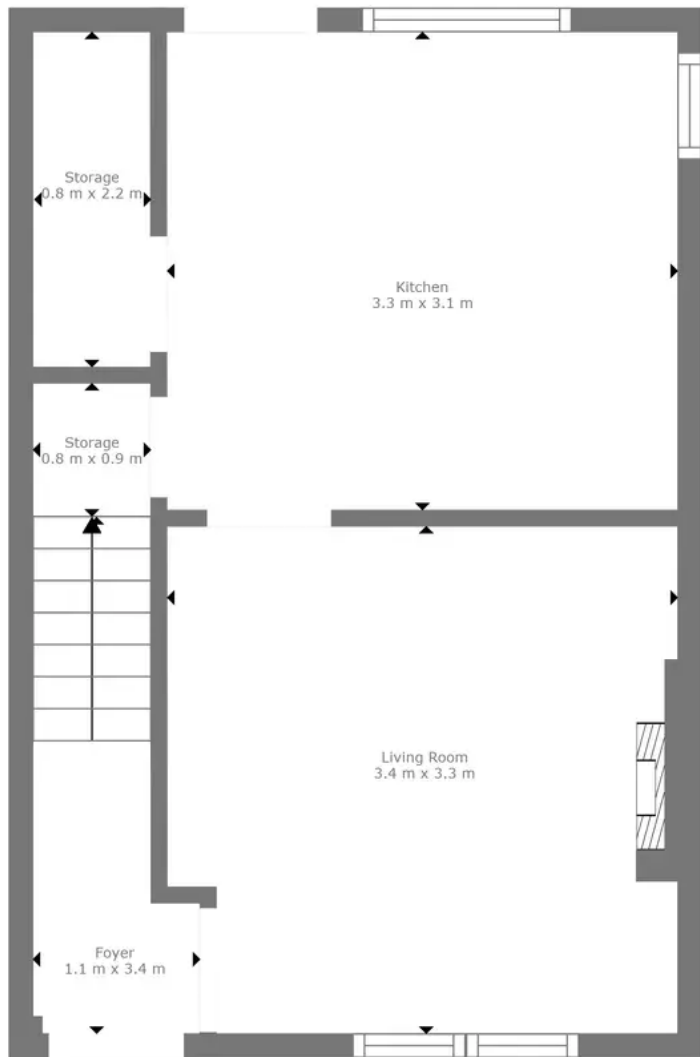
The enchanting garden offers a paved area transitioning to a well-maintained lawn, all enclosed by a secure fence.

Landing:

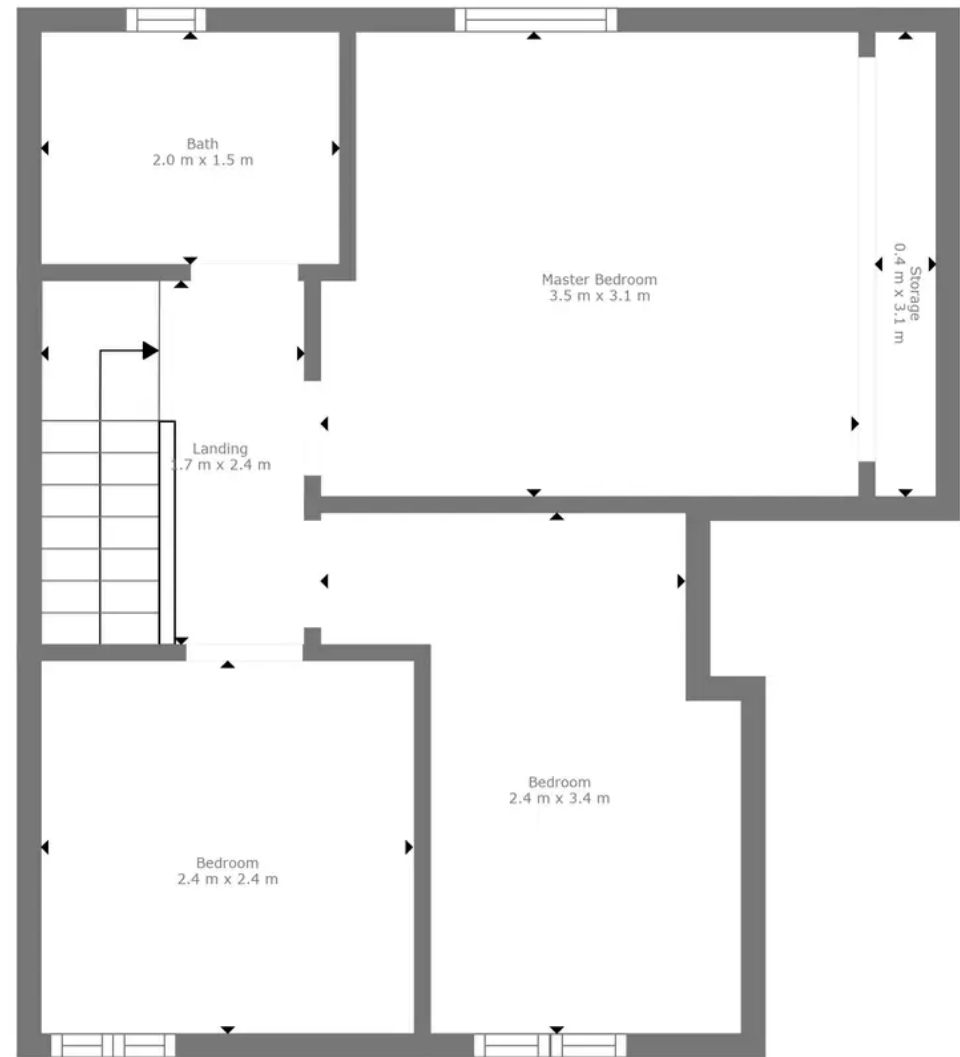
Ascending to the first floor, the landing provides access to the various accommodations.







Floor 1



Floor 2



GROSS INTERNAL AREA
 FLOOR 1: 25 m², FLOOR 2: 32 m²
 EXCLUDED AREAS: STORAGE: 4 m²
 TOTAL: 57 m²

Measurements Are Calculated By Cubicasa Technology. Deemed Highly Reliable But Not Guaranteed.



RDR Dassaur estate agents

Unit 2 Nelson Dale Wharf Street, Warwick - CV34 5LB

01926268989

Admin@RDRDassaur.co.uk

rdrdassaur.co.uk/

