



10 Thompson Close, Swanton Morley

Guide Price £210,000

10 Thompson Close

Swanton Morley, Dereham

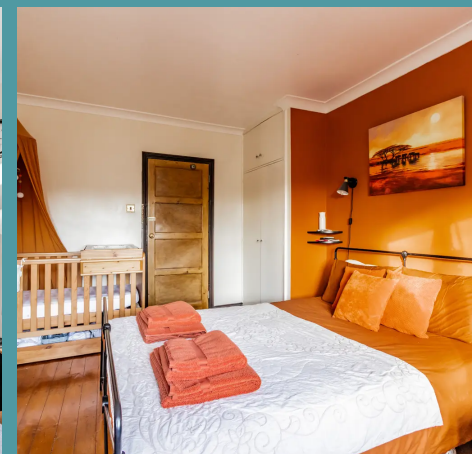
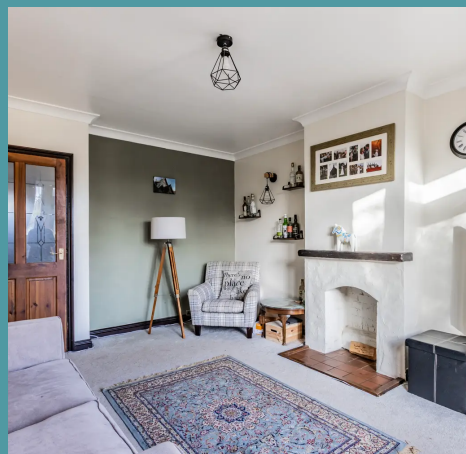
Guide Price: £210,000 - £230,000. Charming 3-bed semi-detached home in the heart of Swanton Morley village. Renovated with a warm ambience and timeless wood finishes. Fully equipped kitchen, utility room, and spacious rear garden. Views and driveway for two vehicles. Planning permission for an additional bedroom with en suite.

Council Tax band: B

Tenure: Freehold

EPC Energy Efficiency Rating: D

EPC Environmental Impact Rating: D





10 Thompson Close

Swanton Morley, Dereham

Guide Price: £210,000 - £230,000. Charming 3-bed semi-detached home in the heart of Swanton Morley village. Renovated with a warm ambience and timeless wood finishes. Fully equipped kitchen, utility room, and spacious rear garden. Views and driveway for two vehicles. Planning permission for an additional bedroom with en suite.

LOCATION

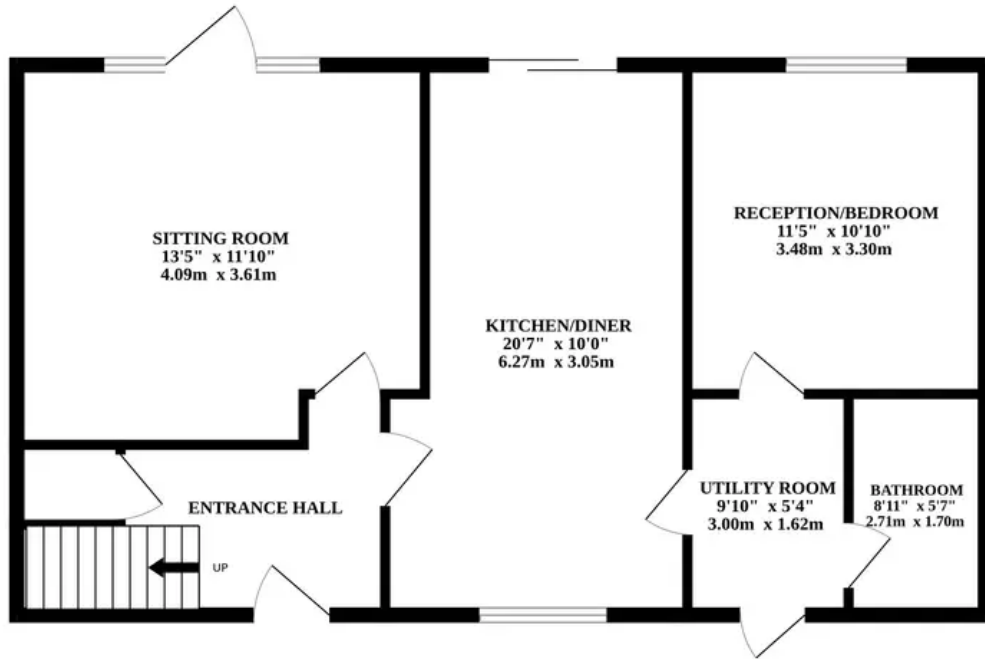
Nestled within the picturesque Norfolk countryside, Swanton Morley exudes a timeless charm that beckons both locals and visitors alike. This idyllic village, with its quaint thatched cottages mixed with a collection of newer homes, captures the essence and warmth of a tight-knit community. At the heart of Swanton Morley lies its thriving community spirit. From lively village fairs to cosy gatherings at the local pub, the communal ties in Swanton Morley are woven tightly. Central to this community are the local school. The village's schools aren't just educational institutions; they are the cradle of learning, nurturing the minds of the future while fostering a sense of togetherness. Parents actively participate in school activities. Swanton Morley is more than just a location – it's a testament to the enduring strength of a close-knit community that values both its history and the aspirations of generations to come.

THE PROPERTY

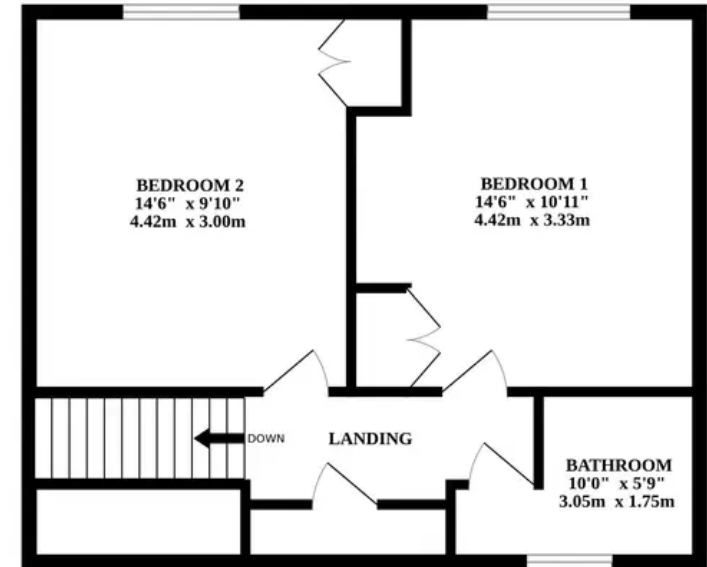
Step into this delightful 3-bedroom semi-detached home, gracefully situated within a private close at the heart of Swanton Morley village. The current



GROUND FLOOR



1ST FLOOR



Whilst every attempt has been made to ensure the accuracy of the floorplan contained here, measurements of doors, windows, rooms and any other items are approximate and no responsibility is taken for any error, omission or mis-statement. This plan is for illustrative purposes only and should be used as such by any prospective purchaser. The services, systems and appliances shown have not been tested and no guarantee as to their operability or efficiency can be given.
Made with Metropix ©2023

