

**ANWYL**  
*thoughtful homes*



**the bunbury**  
3 bed semi-detached

Perfect as a *family* starter home or for first-time buyers.  
Key features include 3 double bedrooms and an open plan kitchen  
family room perfect for modern living.

got  
questions?

call...  
**03300  
244 944**

[www.anwylhomes.co.uk](http://www.anwylhomes.co.uk)  
.....

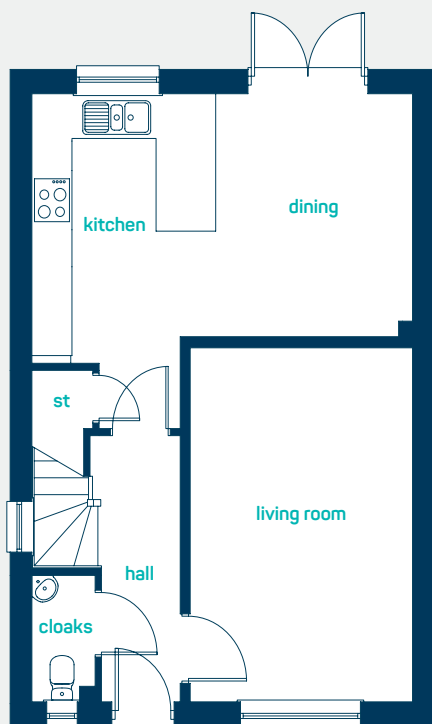
*everything considered.*



perfect for new families

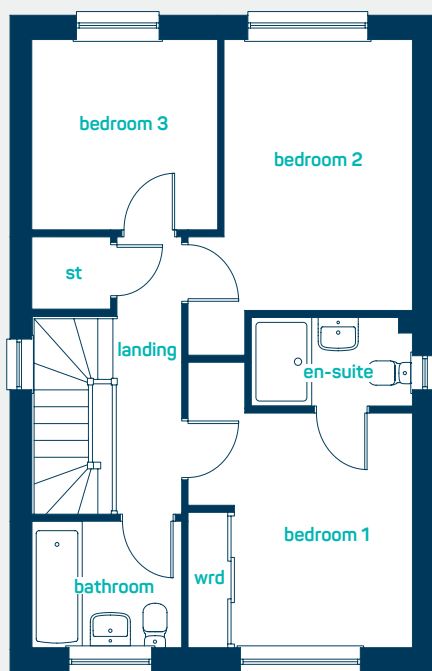
# ANWYL

thoughtful homes



### ground floor

kitchen/dining	18'10" x 12'0"
living room	15'9" x 11'0"
cloaks	5'7" x 3'4"
kitchen/dining	5.75m x 3.64m
living room	4.79m x 3.36m
cloaks	1.71m x 1.02m



### first floor

bedroom 1 (into door)	12'8" x 11'1"
en-suite	8'0" x 3'11"
bedroom 2 (into door)	14'0" x 11'1"
bedroom 3	9'3" x 8'5"
bathroom	7'5" x 5'7"
bedroom 1	3.86m x 3.39m
(into door)	
en-suite	2.44m x 1.2m
bedroom 2 (into door)	4.27m x 3.39m
bedroom 3	2.81m x 2.57m
bathroom	2.26m x 1.71m

get in touch...  
**03300 244 944**

## the bunbury

3 bed semi-detached

[www.anwyllhomes.co.uk](http://www.anwyllhomes.co.uk)

This is a computer generated image of the bunbury semi-detached (hipped), elevation treatment may vary. Room sizes are approximate, dimensions are taken from the longest room point (please consult homes advisor for measurement points). Plots may be handed and any garages may be single or double. Kitchen and bathroom layouts are indicative. These plans are correct at the time of going to press, but may be subject to change during construction. Please ensure that you check for specific plot details. 25/09/2020.

everything considered.