

**TO LET**



## **Roman Place, Westbury**

**1 Bedroom, 1 Bathroom, Room in a Shared House**

**£560 pcm**



  
**MARTIN&CO**



## Roman Place, Westbury

Room in a Shared House,  
1 bedroom, 1 bathroom

£560 pcm

Date available: 22nd July  
2024

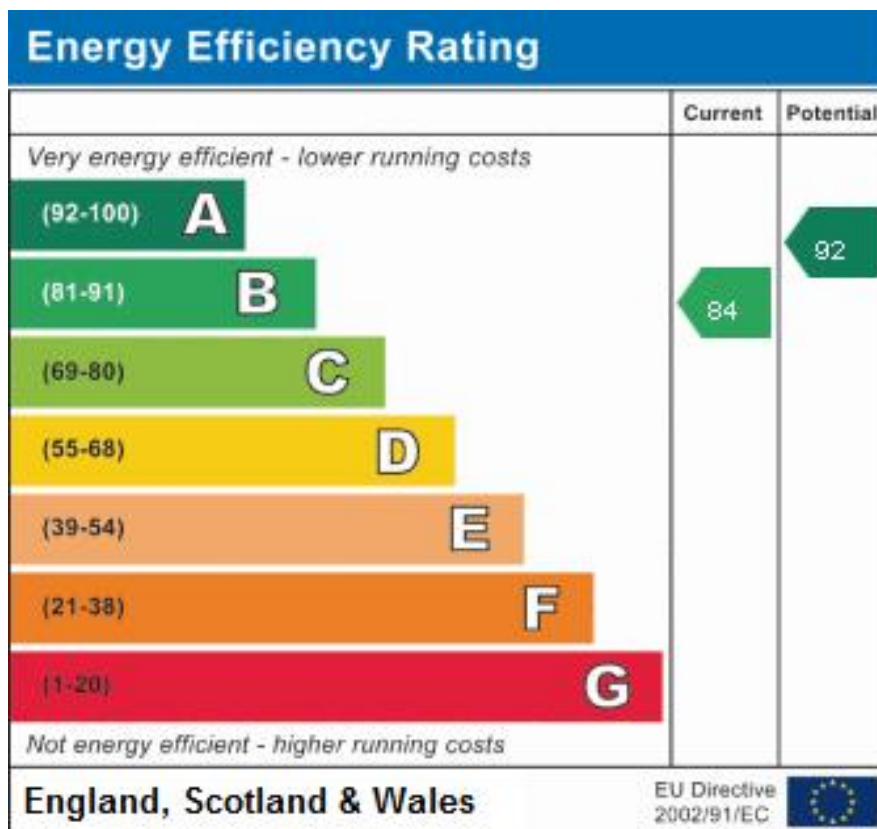
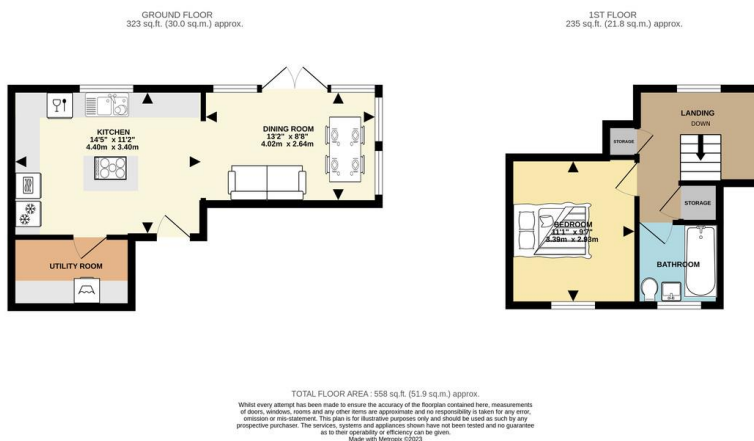
Deposit: £645

Furnished Optional

Council Tax band: E

- Room to let in a modern, beautifully presented house
- Excellent location close to train station and transport links
- Offered fully furnished
- All bills included in rent
- Stunning shared kitchen/dining room and utility room
- Quiet garden
- Separate shared living room

A room to let in a modern, beautifully presented home. Excellent location close to train station and transport links, would make an ideal home during the week for commuting. Offered fully furnished and all bills are included in the rent. The house features a stunning shared kitchen/dining room and utility room. There is also a beautiful and quiet garden, separate shared living room, shared bathroom with shower over the bath. Available immediately for long term let.



## Martin & Co Westbury

7 Palomino Place • Westbury • Wiltshire • BA13 3SD  
T: 01373 866686 • E: westbury@martinco.com

**01373 866686**

<http://www.martinco.com>



**Accuracy:** References to the Tenure of a Property are based on information supplied by the Seller. The Agent has not had sight of the title documents. A Buyer is advised to obtain verification from their Solicitor. Items shown in photographs including but not limited to carpets, fixtures and fittings are not included unless specifically mentioned within the sales particulars. They may however be available by separate negotiation. Buyers must check the availability of any property and make an appointment to view before embarking on any journey to see a property. No person in the employment of the agent has any authority to make any representation about the property, and accordingly any information given is entirely without responsibility on the part of the agents, sellers(s) or lessors(s). Any property particulars are not an offer or contract, nor form part of one. **Sonic / Laser Tape:** Measurements taken using a sonic / laser tape measure may be subject to a small margin of error. **All Measurements:** All Measurements are Approximate. **Services Not tested:** The Agent has not tested any apparatus, equipment, fixtures and fittings or services and so cannot verify that they are in working order or fit for the purpose. A Buyer is advised to obtain verification from their Solicitor or Surveyor.