



MILE



Holberton Gardens, London NW10 £3,200 pcm

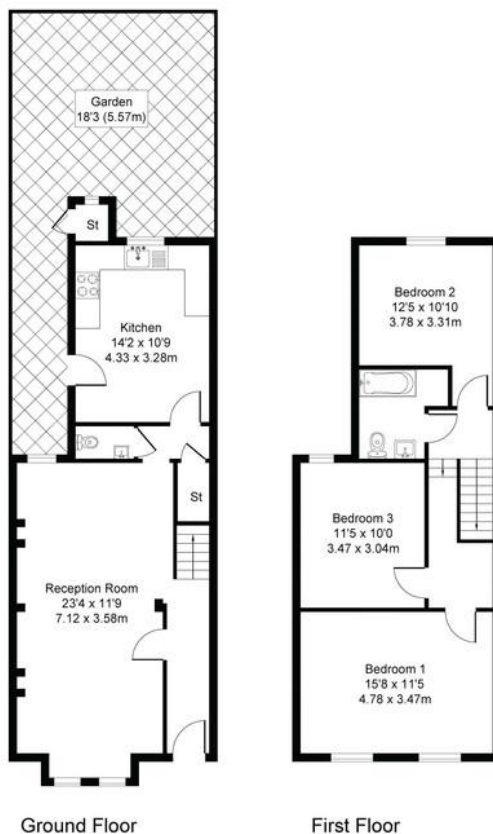
Mile are proud to bring to the market this beautiful family home on this quiet residential road. Offered in excellent condition, this lovely home comprises of a great 23ft double reception room with bay windows, a 14ft fully fitted eat-in kitchen with modern appliances, three double bedrooms and a modern three piece family bathroom.

There also is access through the kitchen into a low maintenance garden, ideal for entertaining.

This great property also benefits from double glazed windows throughout, solid flooring, high ceilings and an abundance of light and storage space.

- Victorian house
- Three double bedrooms
- Available mid Feb 2024
- Part furnished
- Excellent condition
- Hammersmith & Fulham council tax
- Quiet residential road
- Great private garden
- Bright and airy
- Close to shops and transport

Approximate Gross Internal Area
1121 sq ft - 104 sq m



Ground Floor

First Floor



MONEY LAUNDERING REGULATIONS 2003: Intending purchasers will be asked to produce identification documentation at a later stage and we would ask for your co-operation in order that there will be no delay in agreeing the sale.

General: While we endeavour to make our sales particulars fair, accurate and reliable, they are only a general guide to the property and, accordingly, if there is any point which is of particular importance to you, please contact the office and we will be pleased to check the position for you, especially if you are contemplating travelling some distance to view the property.

Measurements: These approximate room sizes are only intended as general guidance. You must verify the dimensions carefully before ordering carpets or any built-in furniture.

Services: Please note we have not tested the services or any of the equipment or appliances in this property, accordingly we strongly advise prospective buyers to commission their own survey or service reports before finalising their offer to purchase.