



18A Heather Park

Seafield, West Lothian, EH47 7BY





Property Summary

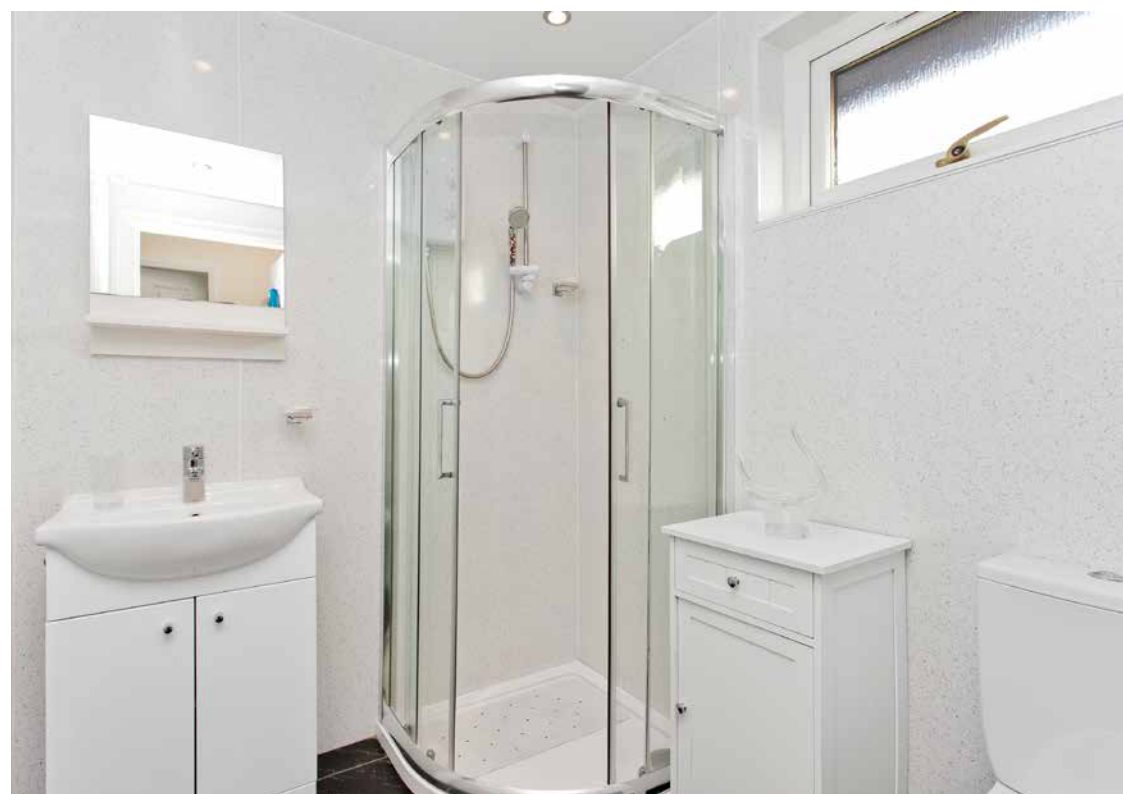
Ideal for those looking for single-storey, easily manageable accommodation, this detached bungalow offers two bedrooms, a living room, a breakfasting kitchen, and a shower room, plus front, side, and rear gardens and a private driveway. The home is situated within an established residential area of Seafield, with village amenities close to hand and more extensive facilities in nearby Bathgate and Livingston.

Extras: all fitted floor coverings, window coverings, light fittings, and integrated kitchen appliances will be included in the sale.

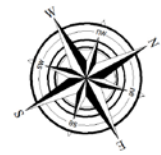


Property Summary

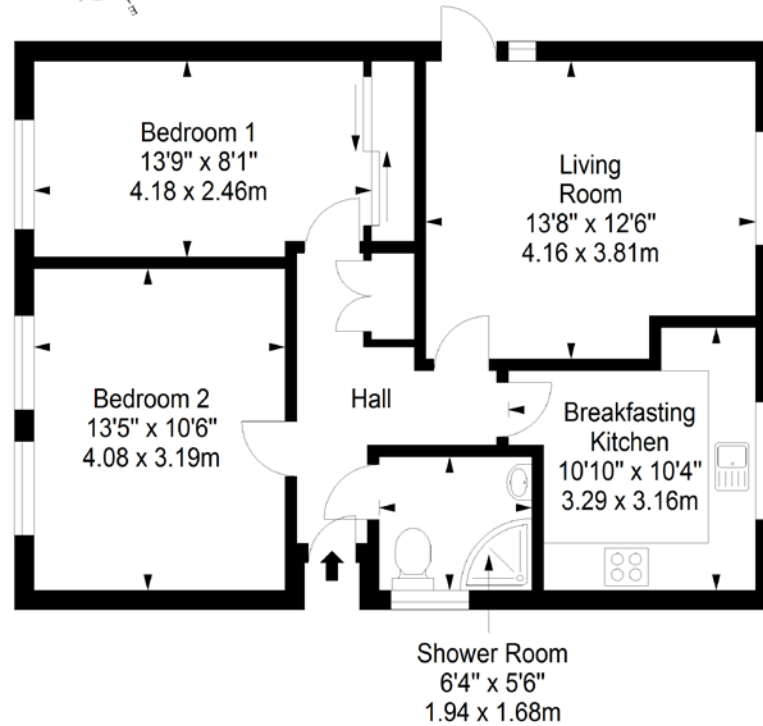
- Detached bungalow in Seafield
- Entrance hall with storage
- Good-sized living room
- Breakfasting kitchen
- Two double bedrooms (one with storage)
- Modern shower room
- Front, side, and rear gardens
- Private driveway
- Gas central heating system
- Double-glazed windows
- EPC Rating - C



Floorplan



Ground Floor
Approx. 61.4 sq. metres (660.9 sq. feet)



Total area: approx. 61.4 sq. metres (660.9 sq. feet)

All Enquiries to our Property Department:

01501 740345 | ss@sneddons-ssc.co.uk | www.sneddonmorrison.co.uk
14 East Main Street, Whitburn, West Lothian EH47 0RB

IMPORTANT: The selling agents for themselves and for the sellers of the above property give notice that these particulars are for guidance only and their accuracy is not guaranteed. These particulars will not form part of any contract and interested parties should satisfy themselves in all aspects prior to submitting offers. The sellers do not bind themselves to accept the highest offer. S1106