



Coopers

Oxley Drive, Finham, Coventry CV3 6FB

£465,000

Oxley Drive

Finham, Coventry CV3 6FB

A fantastic four bedroom family home in a very popular location in Finham. Convenient for the A45 and A46, this property is perfectly located for easy access to the wider road network.

Council Tax band: F

Tenure: Freehold

EPC Energy Efficiency Rating: D

EPC Environmental Impact Rating: E

- Four bedroom detached family home
- Downstairs WC
- Good sized kitchen
- Plenty of space with two large reception rooms
- Large driveway
- Easy road access to A45 and A46



Coopers



Coopers



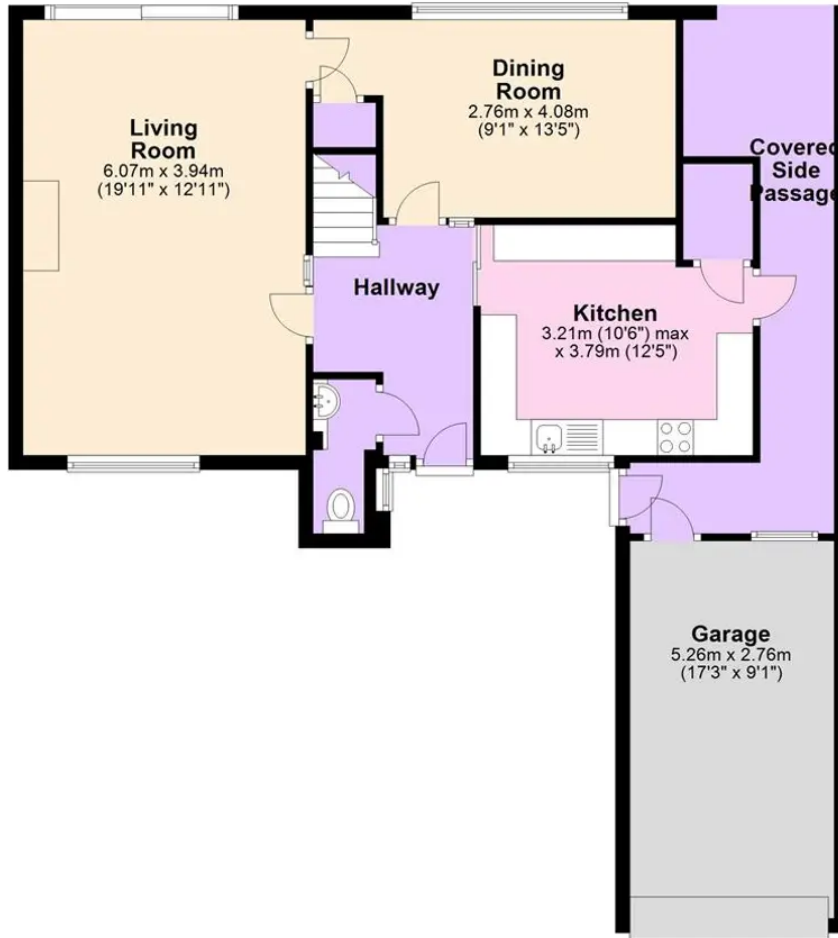
Coopers



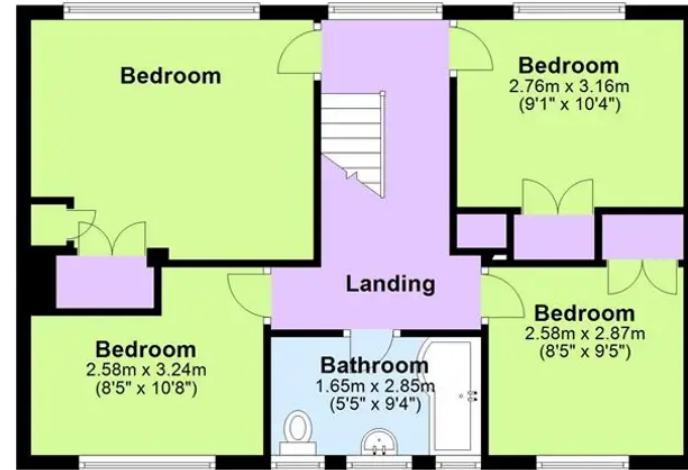
Coopers



Ground Floor



First Floor



Total area: approx. 142.0 sq. metres (1528.0 sq. feet)

This floor plan is for illustrative purposes only and should be used as such by any prospective purchaser. Whilst every attempt has been made to ensure the accuracy of this plan, measurements of doors, windows, rooms and other items are approximate and no responsibility is taken for any error, omission or mis-statement.
Plan produced using PlanUp.

Coopers Estate Agents

Coopers, 22 New Union Street - CV1 2HN

024 7655 2841 • sales@coopersestateagents.com • www.coopersestateagents.com/

Coopers Chartered Surveyors Ltd, 22 New Union Street, Coventry, West Midlands

CV1 2HN, 024 7655 2841, sales@coopers-cov.com. Company Registration

Number: 6725089 / VAT number: 940 3555 34