



Linaker Road, Weeford Estate, Coventry CV3 3EJ

Guide Price £250,000



Linaker Road

Weeford Estate, Coventry CV3 3EJ

Extended and well presented semi detached bungalow with the benefit of gas fired CH, double glazing, flexible living accommodation and loft conversion.

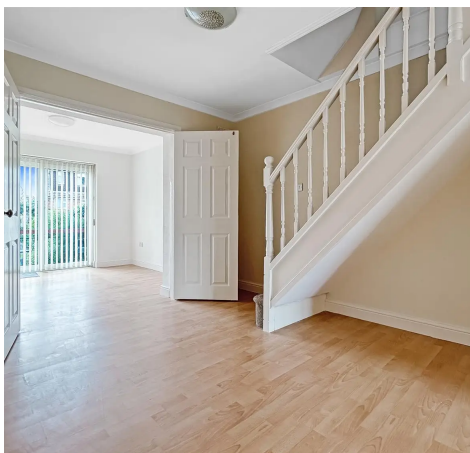
Council Tax band: C

Tenure: Freehold

EPC Energy Efficiency Rating: D

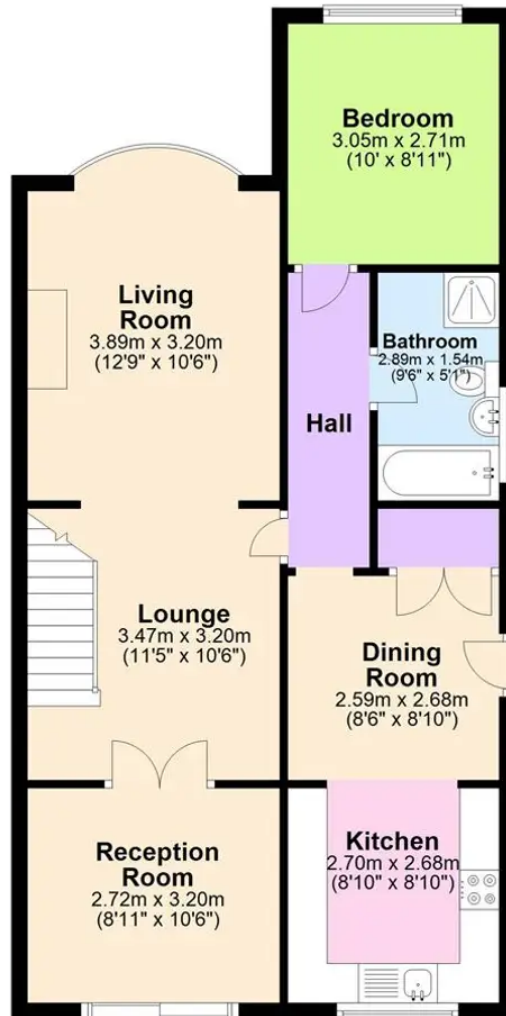
EPC Environmental Impact Rating: E

- Extended well presented semi detached bungalow offering flexible accommodation
- Three living rooms and good sized kitchen open plan to dining room
- Ground floor bedroom and bathroom
- Gas CH, double glazing and loft conversion
- Further bedroom in loft with ensuite WC
- Lovely gardens to front and rear, driveway and garage





Ground Floor



First Floor



This floor plan is for illustrative purposes only and should be used as such by any prospective purchaser. Whilst every attempt has been made to ensure the accuracy of this plan, measurements of doors, windows, rooms and other items are approximate and no responsibility is taken for any error, omission or misstatement.

Plan produced using PlanUp.

Coopers Estate Agents

Coopers, 22 New Union Street - CV1 2HN

024 7655 2841 • sales@coopersestateagents.com • www.coopersestateagents.com/

Coopers Chartered Surveyors Ltd, 22 New Union Street, Coventry, West Midlands

CV1 2HN, 024 7655 2841, sales@coopers-cov.com. Company Registration

Number: 6725089 / VAT number: 940 3555 34