



Elizabeth Way, Long Lawford, Rugby CV23 9DJ

Guide Price £140,000



## Elizabeth Way

Long Lawford, Rugby CV23 9DJ

Double fronted mid terraced home now offered for sale with early possession at a very competitive price to attract an early buyer. Whilst in need of some upgrading, this is a great opportunity for someone to improve the property to their own style and taste. Council Tax band: B

Tenure: Freehold

EPC Energy Efficiency Rating: D

EPC Environmental Impact Rating:

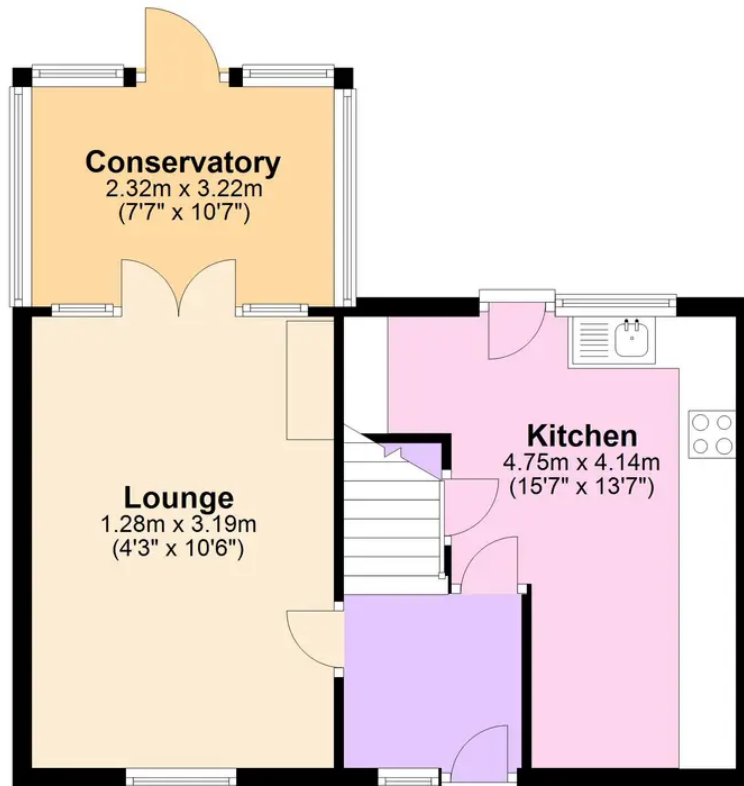
- Double fronted mid terraced home
- Competitively priced
- Lounge with conservatory off and spacious breakfast kitchen
- Two good sized double bedrooms and bathroom
- Front garden with dropped kerb and parking for two vehicles
- South facing rear garden





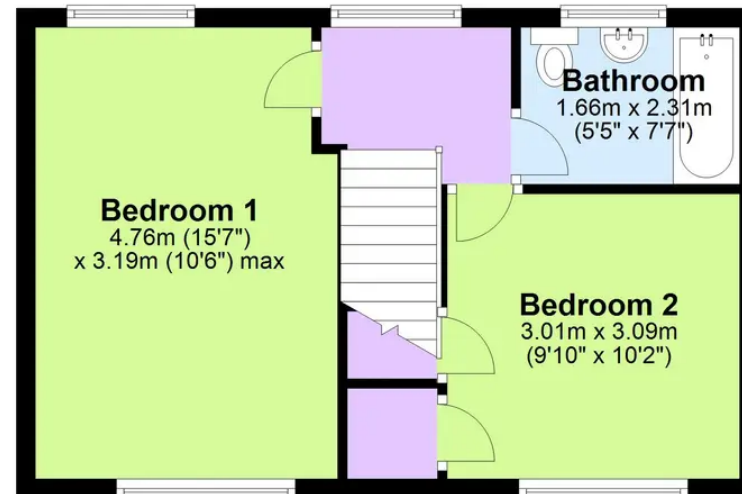
## Ground Floor

Approx. 37.5 sq. metres (403.6 sq. feet)



## First Floor

Approx. 33.8 sq. metres (364.1 sq. feet)



Total area: approx. 71.3 sq. metres (767.7 sq. feet)

This floor plan is for illustrative purposes only and should be used as such by any prospective purchaser. Whilst every attempt has been made to ensure the accuracy of this plan, measurements of doors, windows, rooms and other items are approximate and no responsibility is taken for any error, omission or mis-statement.

Plan produced using PlanUp.

# Coopers Estate Agents

Coopers, 22 New Union Street - CV1 2HN

024 7655 2841 • [sales@coopersestateagents.com](mailto:sales@coopersestateagents.com) • [www.coopersestateagents.com/](http://www.coopersestateagents.com/)

Coopers Chartered Surveyors Ltd, 22 New Union Street, Coventry, West Midlands

CV1 2HN, 024 7655 2841, [sales@coopers-cov.com](mailto:sales@coopers-cov.com). Company Registration

Number: 6725089 / VAT number: 940 3555 34