

The image features a light beige, textured background. In the top-left and bottom-right corners, there are intricate, abstract geometric line art designs. These designs consist of numerous thin, dark lines that curve and intersect to form complex, multi-layered patterns resembling stylized architectural elements or organic forms. The central focus is the text '16 ST CLARE STREET' in a dark green, serif font. The '16' is smaller and positioned to the left of the 'S'. The 'ST' is written in a large, elegant script font, while 'CLARE STREET' is in a smaller, all-caps serif font.

16 ST CLARE STREET

RIB

ROBERT IRVING BURNS



Fully Furnished First Floor



## To Let

Fully DDA compliant, self-contained building.

The building comes with 1 parking space and benefits from a slick exterior.

Ideal HQ premises.

Suitable for Class E  
(Offices, Medical, Clinical, Retail etc.)

---

**Individual Floor Plates Available**

**768 - 10,113 sq ft**

**Fully Furnished First Floor Available**

# Locations

Positioned on the eastern fringe of the City of London, the property enjoys good proximity to Shoreditch, Spitalfields, and Whitechapel, collectively known as London's 'tech-belt'.

The area is amenity-rich with thriving creative hubs. The recent growth of London's creative and TMT sectors has seen Aldgate become a magnet for diverse businesses, from startups to high-profile corporates. Notable occupants include BT Group, Dell, Uber, and Aecom. This is testament to Aldgate's allure for those seeking a vibrant business environment.

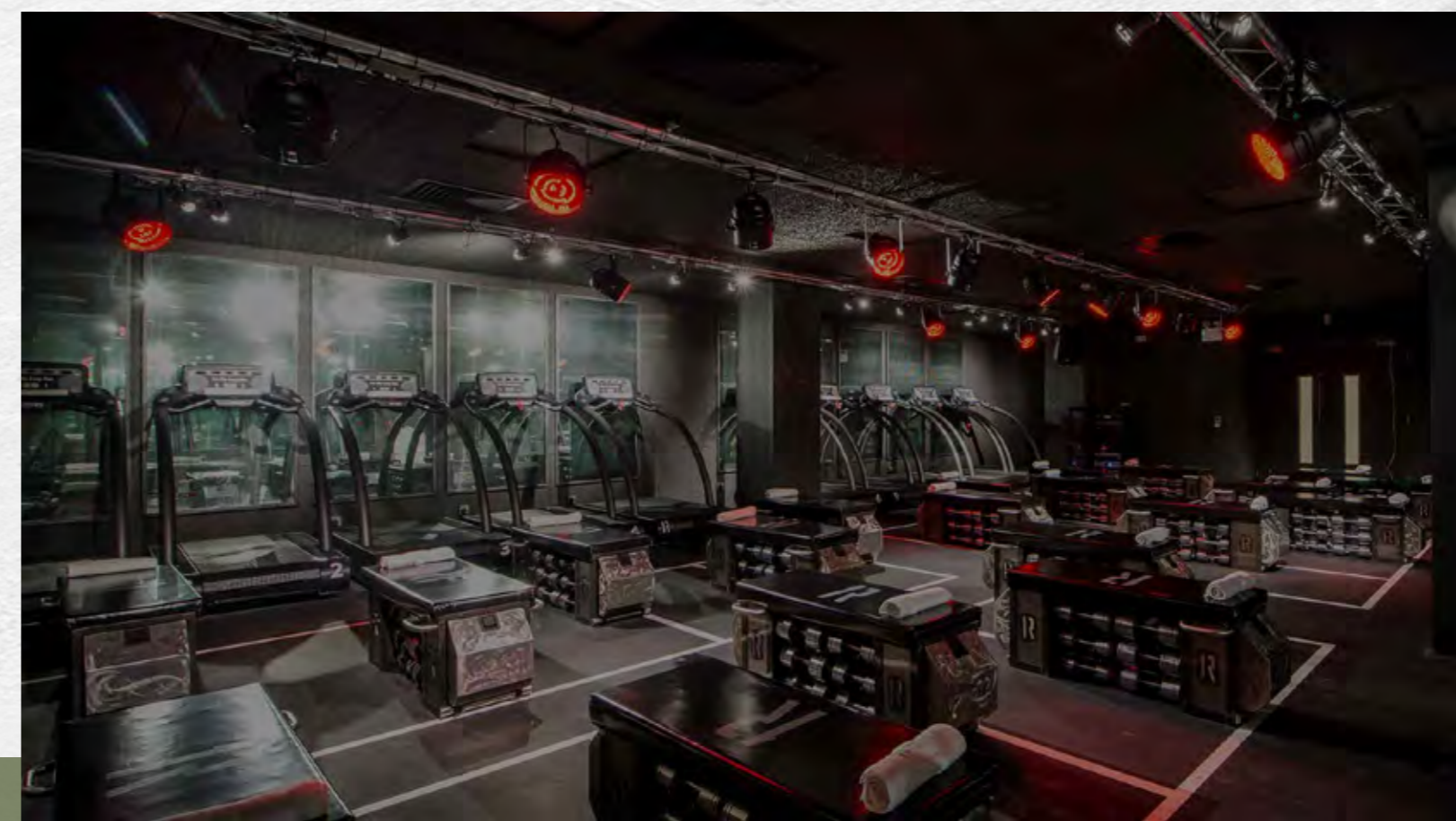
The property is nestled in the heart of Aldgate (just 200 meters from Aldgate station). Fenchurch Street (c2c), Liverpool Street (Crossrail, Overground, c2c), and Tower Hill (Circle, District line) stations are all within a 15 mins walk.



Andaz Hotel



Paradise Alley, Brick Lane



1 Rebel



Running Horse



# Local Occupiers

## Food and drink

- 1 Three Tuns Aldgate
- 2 The Alchemist
- 3 Aldgate Coffee House
- 4 Arts Bar and Café (Toynbee Studios)
- 5 Association Coffee
- 6 Black Sheep Coffee
- 7 Copita del Mercado
- 8 Craft Beer Co
- 9 The Lemn Street Tavern
- 10 Oi Hanoi
- 11 Ottolenghi
- 12 Savage Garden Rooftop Bar, Hilton
- 13 Shaman London Coffee
- 14 Som Saa
- 15 Steam & Rye
- 16 BrewDog

## Leisure

- 1 1 Rebel
- 2 Aldgate Square public realm
- 3 Anytime Fitness
- 4 David Lloyd Studios
- 5 Whitechapel Art Gallery
- 6 Virgin Active
- 7 Wiltons Music Hall

## Hotels

- 1 Andaz Hotel
- 2 Apex Hotel
- 3 Dorsett Hotel
- 4 Double Tree Hilton
- 5 Four Seasons
- 6 Grange Tower Bridge
- 7 Motel One
- 8 Qbic

## Retail

- 1 Bell Foundry
- 2 Spitalfields Market
- 3 Leadenhall Market

## Journey Times

<p>O3  ALDGATE  </p>	<p>O4  ALDGATE EAST  </p>
<p>O5  TOWER GATEWAY  </p>	<p>O6  FENCHURCH ST  </p>
<p>10  LIVERPOOL ST  </p>	<p>15  WHITECHAPEL  </p>

## Lines

- Central
- Circle
- District
- Elizabeth
- Hammersmith & City
- Jubilee
- Metropolitan
- Northern

# Description

16 St Clare Street showcases a building with a sleek and efficient layout. It is a building refurbished by Ben Adams Architects who focused on creating bright and creative workspaces.

The efficient floorplates are flooded with natural daylight from three elevations breathing life into the building. The exposed services throughout add a touch of contemporary and industrial feel. Entry to the building is through an impressive reception area that accommodates a DDA platform lift servicing all floors and a WC designed for disabled access.

Each office suite, averaging around 1,950 sq ft (181.15 sq m), benefits from demised WCs within, ensuring convenience for occupants. New communal shower facilities at the basement level cater to the modern professional lifestyle. The property also has the added benefit of secure cycle storage (it can also be used as a car parking space).

The first floor is delivered CAT A+, fully furnished and ready for tenant occupation.



Reception



? Floor



1st Floor



1st Floor



1st Floor



1st Floor

# Specifications

## Fully Furnished provisions ( First Floor )

 Cabled desking for 20 people


 High stall informal meeting for 6 people

 Fully furnished 6 person boardroom

 Private fitted office

 Corner sofa and coffee table

 Shelving divider

 Glass partitioned and fitted kitchen /  
Break area

## Building Specifications

 Kitchenettes

 Showers

 WCs

 Secure cycle storage

 Parking space

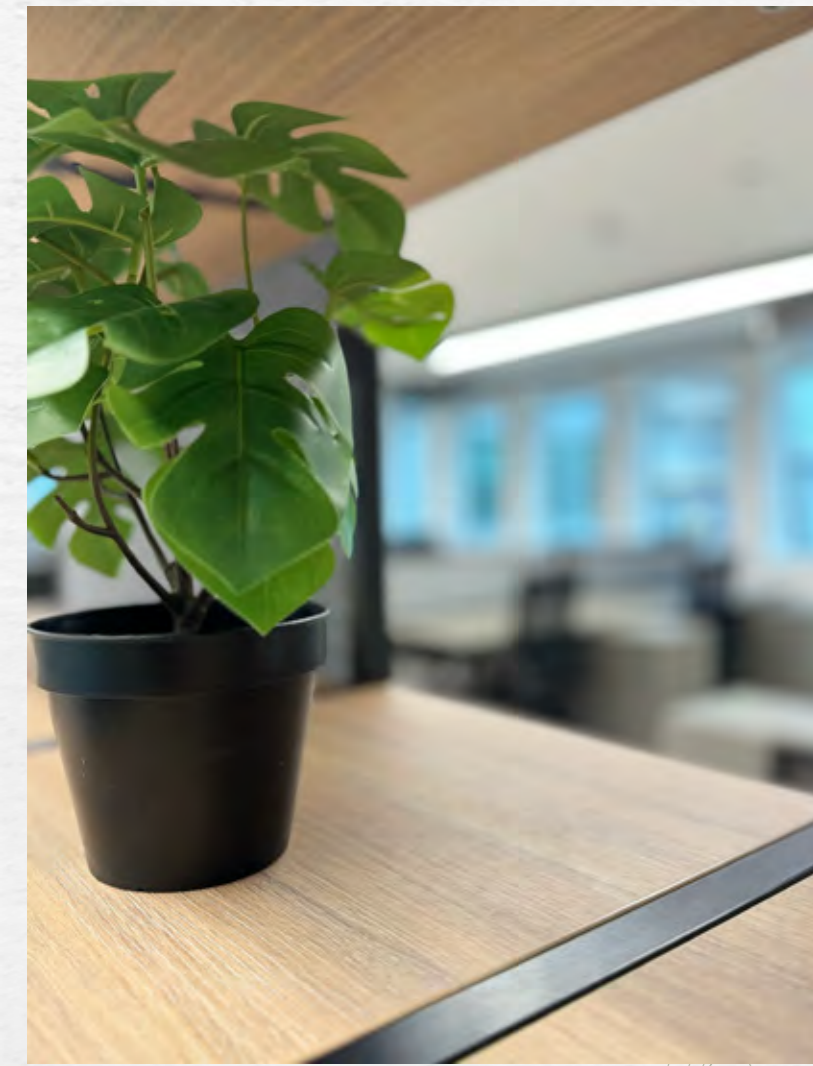
 Excellent Natural Daylight

 Three Elevations

 Mitsubishi VRF air conditioning

 Contemporary exposed services

 Eight-person passenger lift



# Financials



Floor	Size (sq.ft)	Rent (p.a)	Estimated Rates Payable	Service Charge (p.a)	Estimated Occupancy Cost (p.a)
Whole Building	10,113	£512,680	£146,973	£64,738	£732,398
4th	1,950	£87,750	£29,696	£12,553	£131,971
3rd	1,950	£92,625	£30,208	£12,553	£137,392
2nd	1,954	£97,700	£30,464	£12,578	£142,765
1st CAT A+	1,957	£127,205	£32,214	£12,662	£172,081
Ground	1,534	£92,040	£23,703	£9,590	£125,333
Basement	768	£15,360	£2,695	£4,801	£22,856

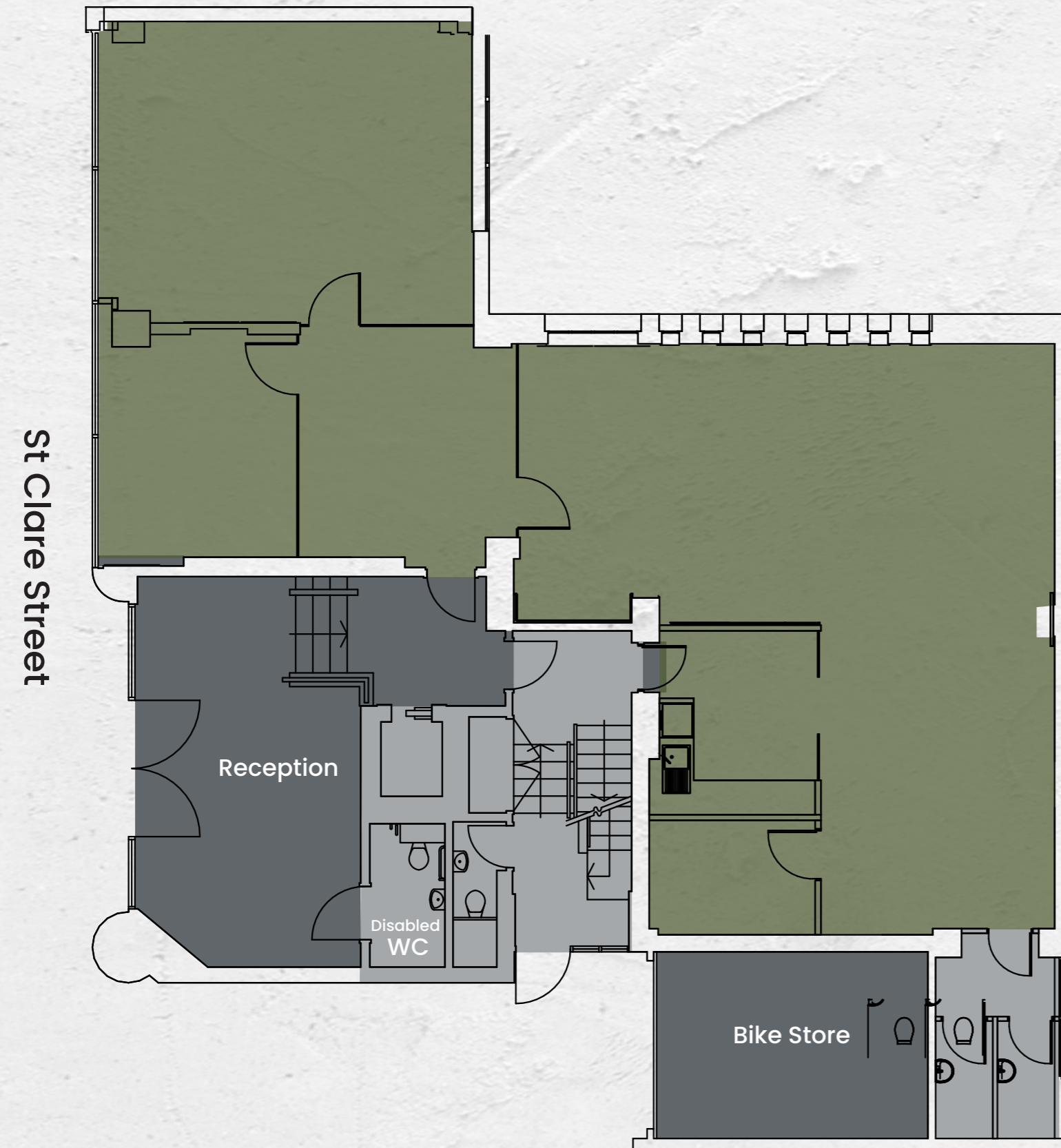
\*Please note the 1st Floor is fully fitted and furnished in CAT A+ condition.



# Floor plans

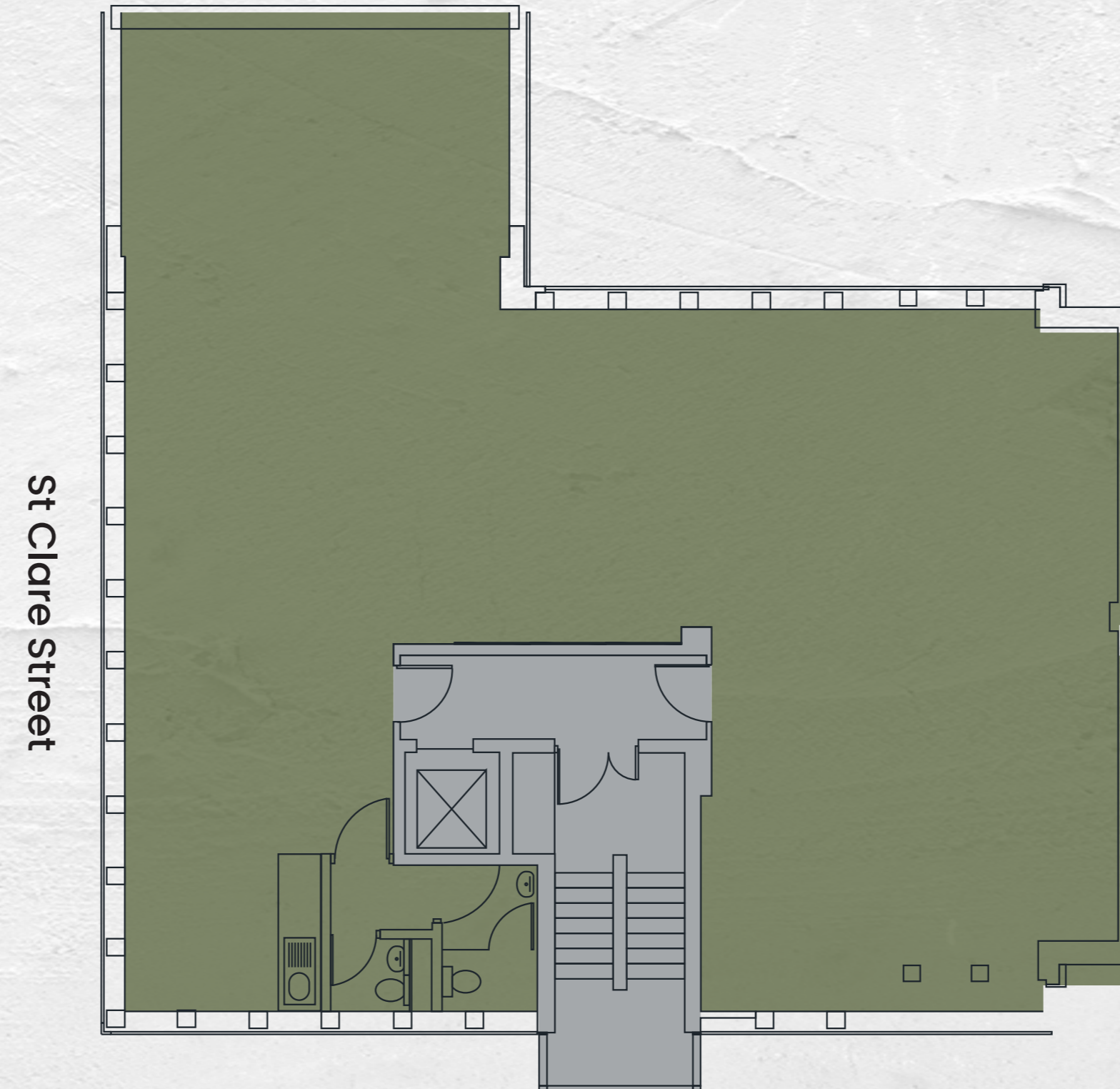
Scaled floor plans upon request.

Ground Floor  
1,534 sq ft / 142.51 sq m



Not to scale.

Typical Upper Floor  
1,950 sq ft / 181.15 sq m





2nd Floor Space Plan

## LEASE

New effective Full Repairing and Insuring lease(s) contracted outside the Landlord and Tenant Act 1954 are available direct from the landlord for a term to be agreed. Please note, additional 1st Floor Left available: 1,000 sq. ft.

## POSSESSION

Available from September 2024.  
Upon completion of legal formalities.

## LEGAL COSTS

Each party is to be responsible for their own legal costs.

## EPC

Available on request.

## FLOOR PLANS

Scaled floor plans available on request.

## VAT

Not elected for VAT.

### Anti-Money Laundering

In accordance with AML Regulations, the successful purchaser will be required to satisfy the Vendor on the source of funds for this acquisition.

### Misrepresentation Act 1967.

These particulars are intended only to give a fair description of the property and do not form the basis of a contract or any part thereof.

These descriptions and all other information are believed to be correct, but their accuracy is in no way guaranteed.

July 2024

# Contact Us

**Freddie Brett**

020 7927 6575

[freddie@rib.co.uk](mailto:freddie@rib.co.uk)

**Jim Clarke**

0207927 0631

[jim@rib.co.uk](mailto:jim@rib.co.uk)

**Matthew Mullan**

020 7927 0622

[matthewm@rib.co.uk](mailto:matthewm@rib.co.uk)

# RIB

ROBERT IRVING BURNS