

Absolute Homes



White Swan, Send

White Swan, Send

Guide Price £169,950

DESCRIPTION

We are delighted to offer for sale this 60 foot widebeam narrowboat, having been fitted out and launched in 2019 for the present owner to an extremely high and proficient standard, using the shell built in 2015. Upon entering from the covered cockpit, there is spacious lounge with solid fuel burning Chilli Penguin stove and which is open plan to a fitted German kitchen. There are 2 separate bedrooms, with plenty of wardrobe and storage space, together with an excellent sized full bathroom. The attention to detail on board and quality of finish is superb with no expense spared.

A brilliant boat to cruise for many weeks at a time. Special fit-out to give a high quality yet bright interior. Self-sufficient cruising with Inverter system 240v and solar panels. Webasto diesel central heating to bespoke chrome radiators. Battery charging system. Vetus 12v Bow Thruster. Double glazed aluminium silver windows. TV with sound bar.

Fabulous fully fitted Galley including double oven, separate under work top fridge and freezer, 4 ring gas hob, marble work tops, microwave and washer dryer washing machine .

The vessel has onboard fresh water storage tanks holding 800 litres. The vessel has centre cleats and a de-lux cockpit fitout with seating areas fully upholstered. Beta 60 HP marine diesel engine with 800 litre tank and plenty of power, yet very economical. This engine is regularly serviced by Beta Marine and still in Warranty.

Current Boat Safety and Gas safe certificates, this vessel is ready to cruise or be a full time home, there is so much thought packed into this vessel it really does need to be seen to fully appreciate what is on offer.

Available immediately.



SPECIFICATION

CUTTWATER – Widebeam 60 x 12 including fenders etc. The boat was only launched late in 2019

Paint

The boat is professionally painted with international snow white 2 pack paint and the hull is painted in intertuf 362 2 pack superior hull paint with no expense spared to protect the structure
25kg anodes – 4 x 5 kg anodes bow and stern and 2 x 2.5 kg slimline anodes mid boat either side

Insulation

Double insulated spray foam and rockwall throughout the boat keep the boat warm in winter and cool in summer

Engine

Beta 60 HP engine near new with very low hours – regularly serviced and inspected by Beta Marine.
Keyless control with master switch inside cabin for security

Diesel tank

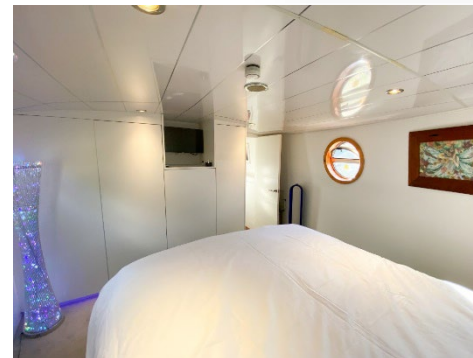
Huge 800 litre diesel tank always kept full and treated regularly

Fresh Water

New Surecal 75 litre twin coil Calorifer with Dual water heater (diesel , immersion) – choice of using diesel or electric, solar or engine power to heat the boat , near new and new plumbing installed within a year
1,000 litre fully insulated water tank under kingsize custom made bed

Electrics

Victron 3000w Multi Plus Invertor
Low light exceptional performance Victron BlueSolar Monocrystalline Solar panels which power the whole boat if not on shore power, 2 years old, 25 years warranty on output and performance, 5 year warranty on materials and workmanship. Advanced MPPT Victron controller with option to increase solar panels if required without the need to update controller. Solar achieves around 200 ah charging and electricity bills are extremely low and boat can be off grid without the need for shore power with current setup
Remote monitoring of solar and battery power via Victron controller in control station
Unique custom made hidden control station for all electric switches and controllers
Built in Galvanic Isolator
Webasto diesel hot water and central heating system with chrome designer radiators
12V lighting throughout the boat including spotlights, bedside lights and stair entrance lighting
All 12V water pumps including constant flow water pump
12V full size shoreline fridge/freezer
12V 32 inch Cello battery TV in second bedroom
12V 21 inch Cello battery TV/DVD in master bedroom
55 Inch wall mounted LG smart TV with sound bar and speakers
12V shaver adapters in bathroom
12V Bath panel lights





SPECIFICATION cont...

Stove

Near new Chilli Penguin multi fuel stove with small oven above with designer glass fire surround and granite stand– 2 years old
Double skinned stainless steel flue with chimney
Front room entrance
Storage under stairs

Kitchen

German Nobilia fitted kitchen with large storage areas including swivel cupboard
Belling LPG full size gas cooker and gas hob
Designer tiles throughout the kitchen area
Shoreline 12 Fridge/Freezer
Bathroom
Marble white floors fully tiled floor to ceiling
Bath with waterfall shower over
Ceramic bowl flushable Thetford toilet with cassette accessed from second bedroom

Other

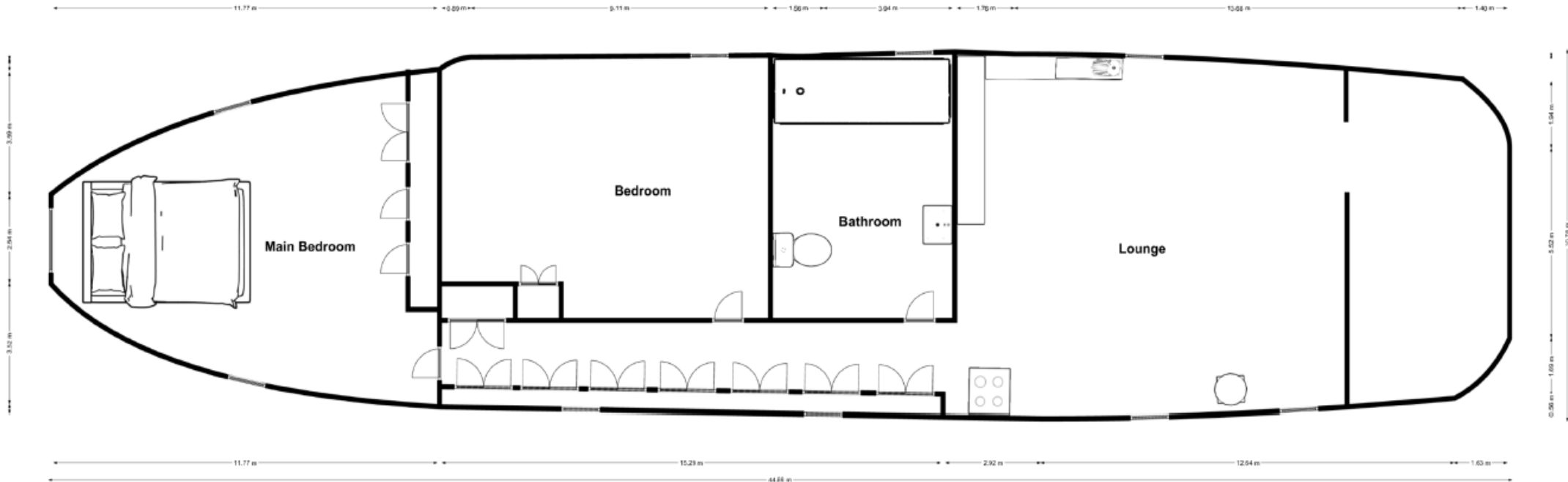
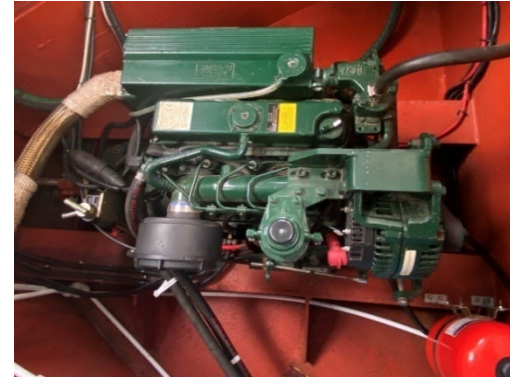
Large canopy on deck creating another room
Deck canopy with blinds for privacy
Full size washing machine and tumble dryer
12V led lighting throughout the boat
Varnished wooden floors and fitted carpets in bedroom
All windows double glazed with all windows having bespoke made cushioned inserts for privacy
Bespoke made solid wood porthole reveals
Designer chrome radiators throughout the boat
CCTV, Alarm and door alarms
Smoke detectors, carbon monoxide alarms throughout
Current BSS certificate – Expires April 2027
Gas safety certificate

The boat has been maintained to the highest standard and has only been in the water for 4 years and not within large marina environments. Fully protected with galvanic isolator and the best possible hull and structure paint available by international paints



INFORMATION

Price: £159,950
Boat Safety: Expires: 17/04/27
Out of Water Survey: 2019
Gas Safety: IWA-0419-061
EPC: Exempt



absolute-homes.co.uk

01784 557 898

info@absolute-homes.co.uk

Important Notice: 1. These particulars have been prepared in good faith as a general guide, they are not exhaustive and include information provided to us by other parties including the seller, not all of which will have been verified by us. 2. We have not carried out a detailed or structural survey; we have not tested any services, appliance or fittings. Measurements, floorplans, orientation and distances are given as approximate only and should not be relied on. 3. The photographs are not necessarily comprehensive or current, aspects may have changed since the photographs were taken. No assumption should be made that any contents are included in the sale. 4. We have not checked that the property has all necessary planning, building regulation approval, statutory or regulatory permissions or consents. Any reference to any alterations or use of any part of the property does not mean that necessary planning, building regulations, or other consents has been obtained. 5. Prospective purchasers should satisfy themselves by inspection, searches, enquiries, surveys, and professional advice about all relevant aspects of the property. 6. These particulars do not form part of any offer or contract and must not be relied upon as statements or representations of fact; we have no authority to make or give any representation or warranties in relation to the property. If these are required, you should include their terms in any contract between you and the seller.

