



31 Burnt Lane, Gorleston

£225,000 Freehold

Guide Price £225,000-£230,000. Stunning 2-bed bungalow in sought-after Gorleston, NR31. Modern feel, sleek kitchen, bright living room, 2 double bedrooms, ample off-road parking. Don't miss out! Contact agents for a viewing.

Council Tax band: D

Tenure: Freehold

Guide Price £225,000-£230,000. Stunning 2-bed bungalow in sought-after Gorleston, NR31. Modern feel, sleek kitchen, bright living room, 2 double bedrooms, ample off-road parking. Don't miss out! Contact agents for a viewing.

LOCATION

Nestled in the heart of Gorleston, Burnt Lane offers a glimpse into the town's historical character. The lane, lined with weathered buildings and worn cobblestone streets, reflects the passage of time. A mix of local businesses populates the area, from no-nonsense shops to casual pubs. As you navigate Burnt Lane, you'll sense a blend of nostalgia and resilience, capturing the authentic spirit of Gorleston.

BURNT LANE, GORLESTON

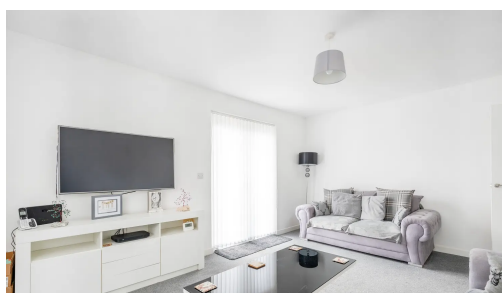
Introducing this stunning two-bedroom bungalow, nestled in the sought-after location of Gorleston, NR31. This beautifully presented property boasts a sleek modern feel throughout, providing a desirable space for any discerning buyer.



Guide Price £225,000-£230,000. Stunning 2-bed bungalow in sought-after Gorleston, NR31. Modern feel, sleek kitchen, bright living room, 2 double bedrooms, ample off-road parking. Don't miss out! Contact agents for a viewing.

LOCATION

Nestled in the heart of Gorleston, Burnt Lane offers a glimpse into the town's historical character. The lane, lined with weathered buildings and worn cobblestone streets, reflects the passage of time. A mix of local businesses populates the area, from no-nonsense shops to casual pubs. As



Guide Price £225,000-£230,000. Stunning 2-bed bungalow in sought-after Gorleston, NR31. Modern feel, sleek kitchen, bright living room, 2 double bedrooms, ample off-road parking. Don't miss out! Contact agents for a viewing.

LOCATION

Nestled in the heart of Gorleston, Burnt Lane offers a glimpse into the town's historical character. The lane, lined with weathered buildings and worn cobblestone streets, reflects the passage of time. A mix of local businesses populates the area, from no-nonsense shops to casual pubs. As you navigate Burnt Lane, you'll sense a blend of nostalgia and resilience, capturing the authentic spirit of Gorleston.

BURNT LANE, GORLESTON

Introducing this stunning two-bedroom bungalow, nestled in the sought-after location of Gorleston, NR31. This beautifully presented property boasts a sleek modern feel throughout, providing a desirable space for any discerning buyer.

As we step inside, we are immediately greeted by the spacious and well-appointed kitchen. With its modern fixtures and tasteful finishes, this kitchen offers both functionality and style, providing the perfect setting for culinary delights. Adjacent to the kitchen is the bright and airy living room, boasting an abundance of natural light that floods in through the large windows, creating a warm and welcoming atmosphere for relaxation or entertaining guests.

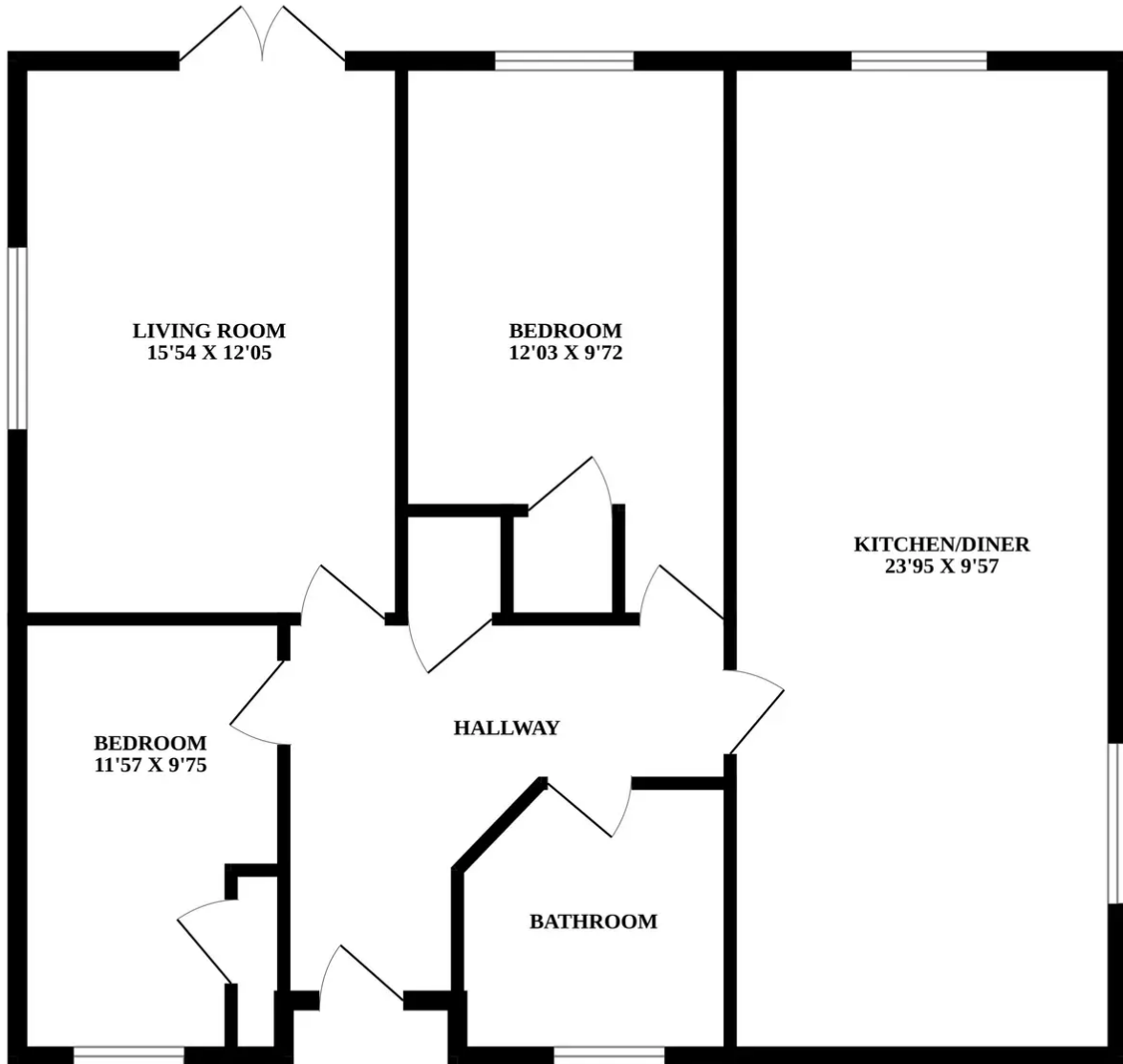
Continuing our tour, we discover two double bedrooms that offer comfort and tranquillity, ensuring restful nights and peaceful mornings. The attention to detail is evident in every aspect of the property, from the sleek built-in wardrobes to the meticulous finishes that add a touch of luxury to these well-designed spaces.

Outside, this property offers ample off-road parking on the walled-off private driveway, providing ease and convenience for multiple vehicles. This property truly epitomises modern living at its finest.

In summary, this beautifully presented two-bedroom bungalow offers a modern and stylish living space, in a highly sought-after location. With its spacious interiors, well-appointed kitchen, and ample off-road parking, this property is sure to impress even the most discerning of buyers. Don't miss out on the opportunity to make this stunning bungalow your very own. Contact our estate agents today to arrange a viewing and embrace a new chapter of stylish living.



GROUND FLOOR



Whilst every attempt has been made to ensure the accuracy of the floorplan contained here, measurements of doors, windows, rooms and any other items are approximate and no responsibility is taken for any error, omission or mis-statement. This plan is for illustrative purposes only and should be used as such by any prospective purchaser. The services, systems and appliances shown have not been tested and no guarantee as to their operability or efficiency can be given.
Made with Metropix ©2023

You can include any text here. The text can be modified upon generating your brochure.

You can include any text here. The text can be modified upon generating your brochure.

