



59-61 Hatton Garden

London, EC1N 8LS

Ground floor unit with original features in a Grade II listed building on Hatton Garden.

784 sq ft

(72.84 sq m)

- Original features
- Ground floor
- Wooden flooring
- Excellent natural light
- Kitchen and toilet facilities
- Meeting room
- 24/7 access

59-61 Hatton Garden, London, EC1N 8LS

Summary

Available Size	784 sq ft
Rent	£35 per sq ft
Rates Payable	£15,344.25 per annum
Rateable Value	£30,750
Service Charge	£3,089.66 per sq ft
VAT	Applicable
Legal Fees	Each party to bear their own costs
EPC Rating	Upon enquiry

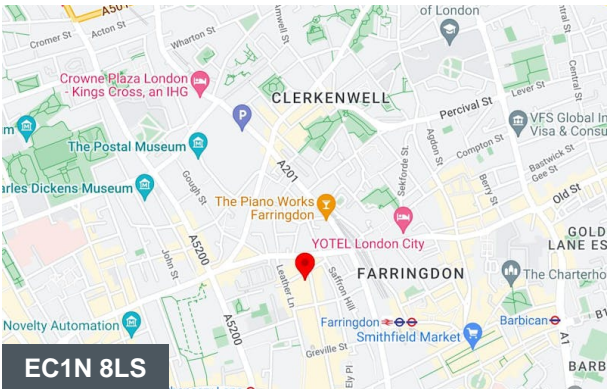
Description

Ground floor unit with original features in a Grade II listed building on Hatton Garden. The characterful space comes equipped with a meeting area, wooden flooring, a meeting room, great lighting and kitchen and toilet facilities. The building is superbly located, with Farringdon Station a 5 minute walk, Chancery Lane a 7 minute walk and bus stops in close proximity.

Accommodation

The accommodation comprises the following areas:

Name	sq ft	Rent	Rates Payable	Service charge	Availability
Ground	784	£27,440 /annum	£15,344.25 /annum	£3,089.66 /annum	Available
Total	784				



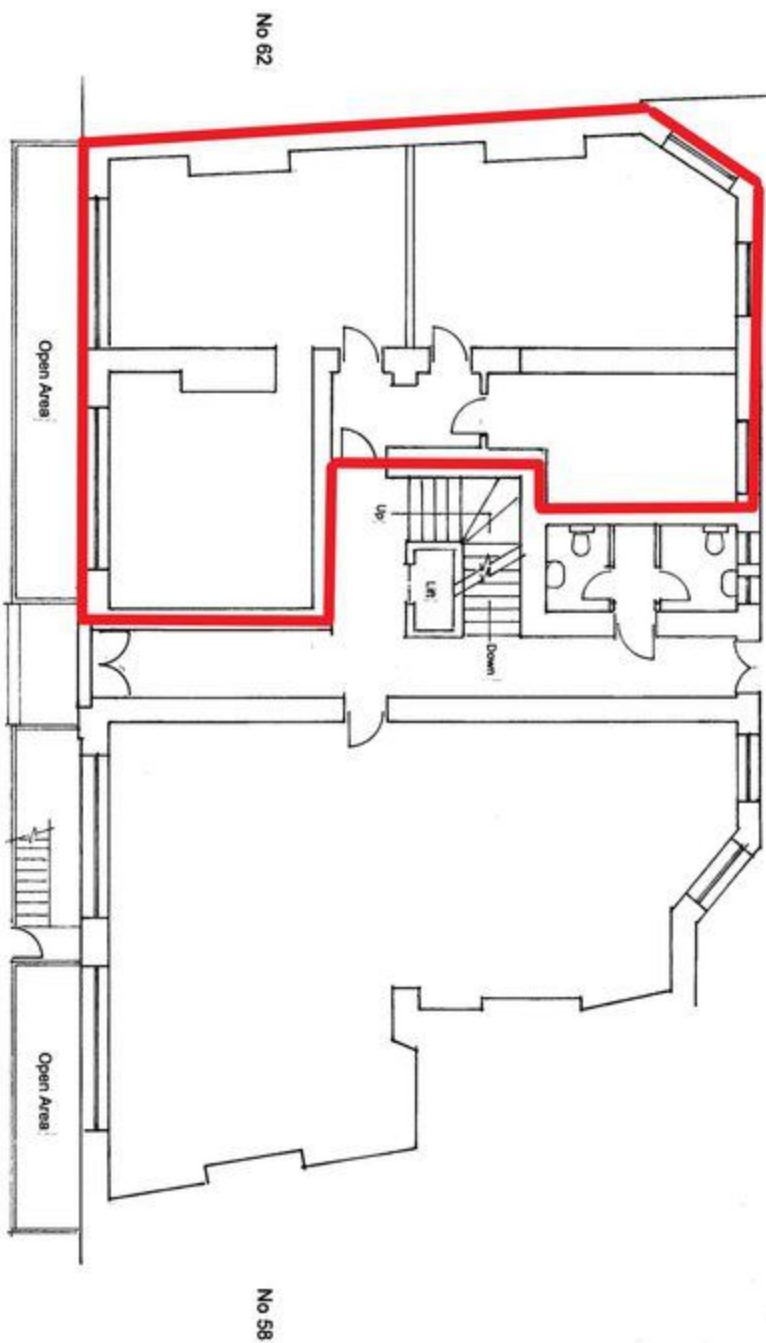
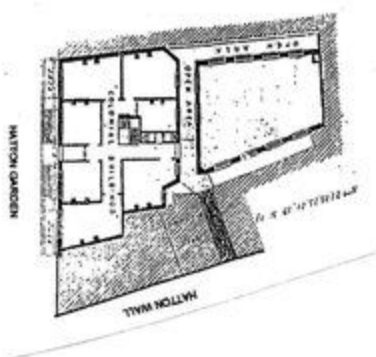
Viewing & Further Information



George Sarantis

020 7613 4044 | 0731 1077 549

george@fyfemcdade.com



GROUND FLOOR PLAN

COLONIAL BUILDINGS
59-61 HATTON GARDEN
LONDON EC1

GROUND FLOOR PLAN

Drawing No 159/02
Scale 1:100
Date Mar 2008