



11 Scafell Place | North Anston | Sheffield | S25 4JR

£145,000

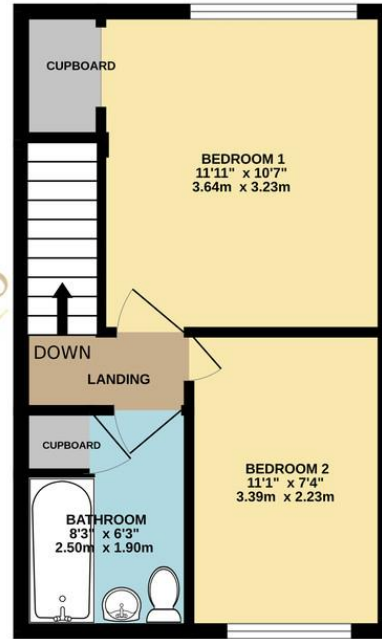
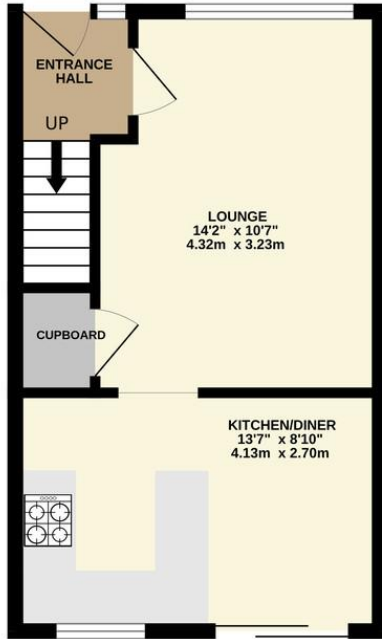
Bell & Co Estates are delighted to present this modern, Two Bedroom Semi-Detached home in the popular village of North Anston. In brief the property comprises of Entrance Hallway providing access to a cosy front facing Lounge with under stairs cupboard, door leading into the modern fitted Kitchen with plenty of cupboard and worktop space, dining area with patio doors opening onto the rear garden. To the upstairs are TWO DOUBLE Bedrooms and a family Bathroom with shower over bath, WC and sink unit. To the front of the property there is allocated parking with three spaces available, a wooden gate providing access to an enclosed rear garden which is mainly laid to lawn. Close to local amenities, shops, schools and transport links this home is in a great location. Viewing is highly recommended to fully appreciate what this home has to offer.

- No Chain
- A Great First Home Or Investment Opportunity
- Modern throughout
- Recently fitted Kitchen
- Cosy Lounge
- Two Good Sized Bedrooms
- Kitchen / Diner
- Enclosed Rear Garden



GROUND FLOOR
312 sq.ft. (29.0 sq.m.) approx.

1ST FLOOR
311 sq.ft. (28.9 sq.m.) approx.



TOTAL FLOOR AREA : 624 sq.ft. (58.0 sq.m.) approx.

Whilst every attempt has been made to ensure the accuracy of the floorplan contained here, measurements of doors, windows, rooms and any other items are approximate and no responsibility is taken for any error, omission or mis-statement. This plan is for illustrative purposes only and should be used as such by any prospective purchaser. The services, systems and appliances shown have not been tested and no guarantee as to their operability or efficiency can be given.

Contact Details

79 Wales Road
Kiveton Park
Sheffield
South Yorkshire
S26 6RA

www.bellcoestates.com

03333 580590

11 Scaffell Place
North Anston
SHEFFIELD
S25 4JR

Energy rating

D

Valid until
26 November 2033

Certificate number
2837-0629-3309-0124-2222

Property type Semi-detached house

Total floor area 58 square metres

Agents Note: Whilst every care has been taken to prepare these sales particulars, they are for guidance purposes only. All measurements are approximate and for general guidance purposes only and whilst every care has been taken to ensure their accuracy, they should not be relied upon and potential buyers are advised to recheck the measurements