



21 Red Hill | Kiveton Park | Rotherham | S26 6QA Offers In The Region Of £325,000

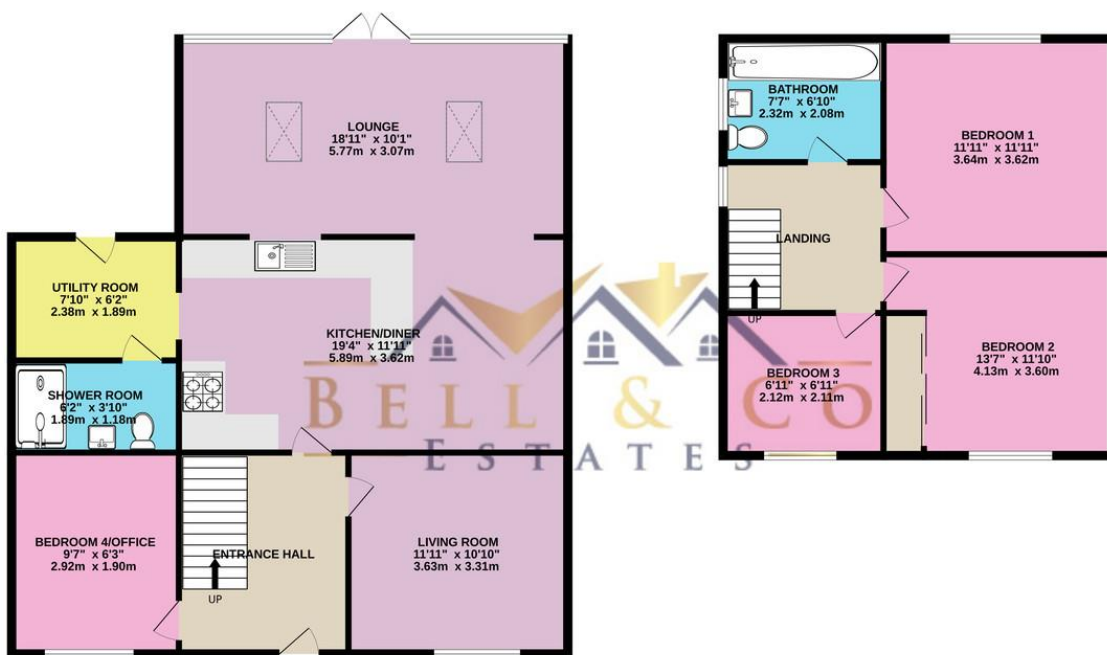
Bell & Co Estates are delighted to present to the market this THREE/FOUR Bedroom Detached, EXTENDED Home in Kiveton. In brief the property comprises of Entrance Hallway with understairs cupboard, LOUNGE with fire and mantel piece, fourth Bedroom. Down the hall is stunning open plan MODERN FITTED KITCHEN with integrated appliances and breakfast bar, open DINING AREA and further reception room with Velux windows overlooking the garden, separate utility room and downstairs shower room. Upstairs are THREE Bedrooms, TWO DOUBLE one with fitted wardrobes, one single Bedroom with fitted wardrobe over the stairs and the modern Family Bathroom with shower over bath. To the front of the property is a driveway for around three cars providing off road parking and side gate providing access to the rear garden. To the rear of the property is a decking area with HOT TUB, then down the stairs is a BAR and BBQ AREA with stoned patio and spacious grassed area.

- THREE/ FOUR BEDROOM DETACHED HOME
- Modern Throughout
- Open Plan Kitchen, Diner and Living Area
- Separate Lounge
- Utility Room and Downstairs Shower Room



GROUND FLOOR

1ST FLOOR



Whilst every attempt has been made to ensure the accuracy of the floorplan contained here, measurements of doors, windows, rooms and any other items are approximate and no responsibility is taken for any error, omission or mis-statement. This plan is for illustrative purposes only and should be used as such by any prospective purchaser. The services, systems and appliances shown have not been tested and no guarantee as to their operability or efficiency can be given.
Made with Metropix ©2023

Contact Details

79 Wales Road
Kiveton Park
Sheffield
South Yorkshire
S26 6RA

www.bellcoestates.com

03333 580590

21, Red Hill
Kiveton Park
SHEFFIELD
S26 6QA

Energy rating

D

Valid until
25 October 2023

Certificate number
9342-2836-6602-9527-1371

Property type Detached house

Total floor area 86 square metres

Agents Note: Whilst every care has been taken to prepare these sales particulars, they are for guidance purposes only. All measurements are approximate and for general guidance purposes only and whilst every care has been taken to ensure their accuracy, they should not be relied upon and potential buyers are advised to recheck the measurements